

SERPINA6 Antibody (Center)

Affinity Purified Rabbit Polyclonal Antibody (Pab)

Catalog # AP10736c

Product Information

Application	IHC-P, IF, WB, E
Primary Accession	P08185
Other Accession	NP_001747.2
Reactivity	Human
Host	Rabbit
Clonality	Polyclonal
Isotype	Rabbit IgG
Clone Names	RB28078
Calculated MW	45141
Antigen Region	197-225

Additional Information

Gene ID	866
Other Names	Corticosteroid-binding globulin, CBG, Serpin A6, Transcortin, SERPINA6, CBG
Target/Specificity	This SERPINA6 antibody is generated from rabbits immunized with a KLH conjugated synthetic peptide between 197-225 amino acids from the Central region of human SERPINA6.
Dilution	IHC-P~~1:100 IF~~1:10~50 WB~~1:1000 E~~Use at an assay dependent concentration.
Format	Purified polyclonal antibody supplied in PBS with 0.09% (W/V) sodium azide. This antibody is purified through a protein A column, followed by peptide affinity purification.
Storage	Maintain refrigerated at 2-8°C for up to 2 weeks. For long term storage store at -20°C in small aliquots to prevent freeze-thaw cycles.
Precautions	SERPINA6 Antibody (Center) is for research use only and not for use in diagnostic or therapeutic procedures.

Protein Information

Name	SERPINA6
Synonyms	CBG
Function	Major transport protein for glucocorticoids and progestins in the blood of

almost all vertebrate species.

Cellular Location

Secreted.

Tissue Location

Plasma; synthesized in liver. Has also been identified in a number of glyccorticoid responsive cells

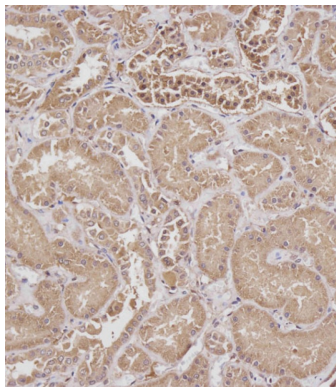
Background

This gene encodes an alpha-globulin protein with corticosteroid-binding properties. This is the major transport protein for glucocorticoids and progestins in the blood of most vertebrates. The gene localizes to a chromosomal region containing several closely related serine protease inhibitors which may have evolved by duplication events.

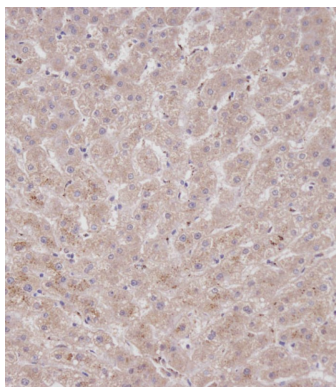
References

Bailey, S.D., et al. Diabetes Care (2010) In press :
Rose, J.E., et al. Mol. Med. 16 (7-8), 247-253 (2010) :
Holliday, K.L., et al. J Psychosom Res 68(5):469-474(2010)
Braun, B.C., et al. J. Steroid Biochem. Mol. Biol. 120(1):30-37(2010)
Lewis, J.G., et al. Horm. Metab. Res. 42(4):274-279(2010)

Images

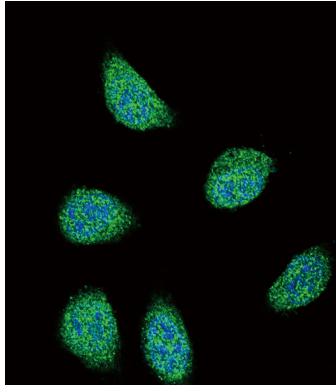
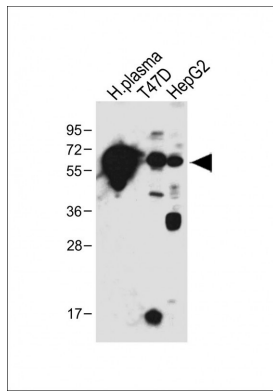


Immunohistochemical analysis of AP10736C on paraffin-embedded Human kidney tissue. Tissue was fixed with formaldehyde at room temperature. Heat induced epitope retrieval was performed by EDTA buffer (pH9. 0). Samples were incubated with primary antibody(1:100) for 1 hour at room temperature. Undiluted CRF Anti-Polyvalent HRP Polymer antibody was used as the secondary antibody.



Immunohistochemical analysis of AP10736C on paraffin-embedded Human liver tissue. Tissue was fixed with formaldehyde at room temperature. Heat induced epitope retrieval was performed by EDTA buffer (pH9. 0). Samples were incubated with primary antibody(1:100) for 1 hour at room temperature. Undiluted CRF Anti-Polyvalent HRP Polymer antibody was used as the secondary antibody.

All lanes : Anti-SERPINA6 Antibody (Center) at 1:1000 dilution Lane 1: Human plasma tissue lysate Lane 2: T47D whole cell lysate Lane 3: HepG2 whole cell lysate Lysates/proteins at 20 µg per lane. Secondary Goat Anti-Rabbit IgG, (H+L), Peroxidase conjugated at 1/10000 dilution. Predicted band size : 45 kDa Blocking/Dilution buffer: 5% NFDM/TBST.



Confocal immunofluorescent analysis of SERPINA6 Antibody (Center) (Cat#AP10736c) with 293 cell followed by Alexa Fluor 488-conjugated goat anti-rabbit IgG (green). DAPI was used to stain the cell nuclear (blue).

Please note: All products are 'FOR RESEARCH USE ONLY. NOT FOR USE IN DIAGNOSTIC OR THERAPEUTIC PROCEDURES'.