

# ENTPD3 Antibody (C-term)

Affinity Purified Rabbit Polyclonal Antibody (Pab)

Catalog # AP10716b

## Product Information

---

<b>Application</b>	WB, IHC-P, FC, E
<b>Primary Accession</b>	<a href="#">O75355</a>
<b>Other Accession</b>	<a href="#">NP_001239.2</a>
<b>Reactivity</b>	Human
<b>Host</b>	Rabbit
<b>Clonality</b>	Polyclonal
<b>Isotype</b>	Rabbit IgG
<b>Clone Names</b>	RB28547
<b>Calculated MW</b>	59105
<b>Antigen Region</b>	496-527

## Additional Information

---

<b>Gene ID</b>	956
<b>Other Names</b>	Ectonucleoside triphosphate diphosphohydrolase 3, NTPDase 3, CD39 antigen-like 3, Ecto-ATP diphosphohydrolase 3, Ecto-ATPDase 3, Ecto-ATPase 3, Ecto-apyrase 3, HB6, ENTPD3, CD39L3
<b>Target/Specificity</b>	This ENTPD3 antibody is generated from rabbits immunized with a KLH conjugated synthetic peptide between 496-527 amino acids from the C-terminal region of human ENTPD3.
<b>Dilution</b>	WB~~1:1000 IHC-P~~1:100~500 FC~~1:10~50 E~~Use at an assay dependent concentration.
<b>Format</b>	Purified polyclonal antibody supplied in PBS with 0.05% (V/V) Proclin 300. This antibody is prepared by Saturated Ammonium Sulfate (SAS) precipitation followed by dialysis against PBS.
<b>Storage</b>	Maintain refrigerated at 2-8°C for up to 2 weeks. For long term storage store at -20°C in small aliquots to prevent freeze-thaw cycles.
<b>Precautions</b>	ENTPD3 Antibody (C-term) is for research use only and not for use in diagnostic or therapeutic procedures.

## Protein Information

---

<b>Name</b>	ENTPD3 ( <a href="#">HGNC:3365</a> )
<b>Function</b>	Catalyzes the hydrolysis of nucleoside triphosphates (NTPs) and

diphosphates (NDPs) (PubMed:[10231536](#), PubMed:[11300774](#), PubMed:[15966724](#), PubMed:[9675246](#)). The enzyme sequentially removes phosphate groups in two successive steps, converting NTPs to nucleoside monophosphates (NMPs) via NDP intermediates (PubMed:[10231536](#), PubMed:[11300774](#), PubMed:[15966724](#), PubMed:[9675246](#)). This activity contributes to the regulation of extracellular levels of nucleotides (PubMed:[10231536](#), PubMed:[11300774](#), PubMed:[15966724](#), PubMed:[9675246](#)). Has a preference for the hydrolysis of ATP (PubMed:[10231536](#)). Does not hydrolyzes AMP (PubMed:[9675246](#)).

#### Cellular Location

Cell membrane; Multi-pass membrane protein

#### Tissue Location

Expressed in adult brain, pancreas, spleen and prostate (PubMed:[9676430](#)). Moderate or low expression is seen in most tissues (PubMed:[9676430](#)). Not expressed in liver and peripheral blood leukocytes (PubMed:[9676430](#)).

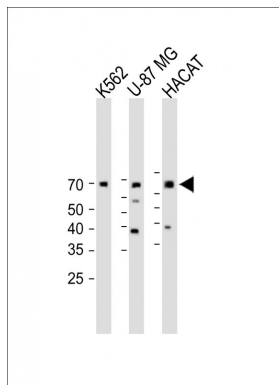
## Background

ENTPD3 is similar to E-type nucleotidases (NTPases). NTPases, such as CD39, mediate catabolism of extracellular nucleotides. ENTPD3 contains 4 apyrase-conserved regions which is characteristic of NTPases.

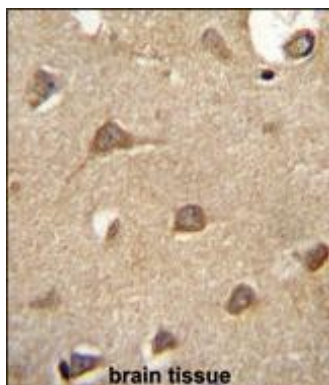
## References

Fausther, M., et al. Am. J. Physiol. Lung Cell Mol. Physiol. 298 (6), L804-L818 (2010) :  
 Gaddie, K.J., et al. Biochemistry 48(40):9437-9447(2009)  
 Munkonda, M.N., et al. FEBS J. 276(2):479-496(2009)  
 Munkonda, M.N., et al. Biochem. Pharmacol. 74(10):1524-1534(2007)  
 Ivanenkov, V.V., et al. Biochemistry 44(25):8998-9012(2005)

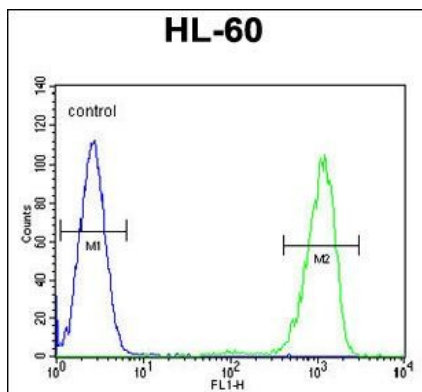
## Images



All lanes : Anti-ENTPD3 Antibody (C-term))at 1:2000 dilution Lane 1:K562 whole cell lysate Lane 2: U-87MG whole cel lysate Lane 3: HACAT whole cel lysate Lysates/proteins at 20 µg per lane. Secondary Goat Anti-Rabbit IgG, (H+L), Peroxidase conjugated (ASP1615) at 1/15000 dilution. Observed band size : 60kDa Blocking/Dilution buffer: 5% NFDM/TBST.



ENTPD3 antibody (C-term) (Cat. #AP10716b) immunohistochemistry analysis in formalin fixed and paraffin embedded human brain tissue followed by peroxidase conjugation of the secondary antibody and DAB staining.This data demonstrates the use of ENTPD3 antibody (C-term) for immunohistochemistry. Clinical relevance has not been evaluated.



ENTPD3 Antibody (C-term) (Cat. #AP10716b) flow cytometric analysis of HL-60 cells (right histogram) compared to a negative control cell (left histogram). FITC-conjugated goat-anti-rabbit secondary antibodies were used for the analysis.

Please note: All products are 'FOR RESEARCH USE ONLY. NOT FOR USE IN DIAGNOSTIC OR THERAPEUTIC PROCEDURES'.