

CD37 Antibody (Center)

Affinity Purified Rabbit Polyclonal Antibody (Pab)

Catalog # AP10711c

Product Information

Application	WB, FC, E
Primary Accession	P11049
Other Accession	NP_001765.1
Reactivity	Human
Host	Rabbit
Clonality	Polyclonal
Isotype	Rabbit IgG
Clone Names	RB23676
Calculated MW	31703
Antigen Region	101-130

Additional Information

Gene ID	951
Other Names	Leukocyte antigen CD37, Tetraspanin-26, Tspan-26, CD37, CD37, TSPAN26
Target/Specificity	This CD37 antibody is generated from rabbits immunized with a KLH conjugated synthetic peptide between 101-130 amino acids from the Central region of human CD37.
Dilution	WB~~1:1000 FC~~1:10~50 E~~Use at an assay dependent concentration.
Format	Purified polyclonal antibody supplied in PBS with 0.09% (W/V) sodium azide. This antibody is purified through a protein A column, followed by peptide affinity purification.
Storage	Maintain refrigerated at 2-8°C for up to 2 weeks. For long term storage store at -20°C in small aliquots to prevent freeze-thaw cycles.
Precautions	CD37 Antibody (Center) is for research use only and not for use in diagnostic or therapeutic procedures.

Protein Information

Name	CD37
Synonyms	TSPAN26
Function	Structural component of specialized membrane microdomains known as tetraspanin-enriched microdomains (TERMs), which act as platforms for

receptor clustering and signaling. Participates thereby in diverse biological functions such as cell signal transduction, adhesion, migration and protein trafficking (PubMed:[22624718](#)). Upon ligand binding, two signaling pathways are activated, one acting through phosphorylation by LYN leading to cell death or a survival pathway with activation of GSK3B (PubMed:[22624718](#)). Plays an essential role essential for clustering of integrin ITGA4/ITGB1 and promotes its mobility in the plasma membrane of B-cells. In turn, participates in ITGA4/ITGB1 integrin-mediated antiapoptotic signaling through AKT (By similarity). Also plays a role in the migration of dendritic cells and neutrophils to draining lymph nodes, as well as in their integrin- mediated adhesion (By similarity). Negatively regulates IL-6 responses through direct interaction with SOCS3 thereby preventing constitutive IL-6 signaling (PubMed:[26784544](#)). Alternatively, inhibition of IL-6 signaling can also occur via interaction and stabilization of DECTIN1/CLEC7A at the cell membrane to inhibit its ability to promote the production of IL-6 (PubMed:[17182550](#)).

Cellular Location

Cell membrane; Multi-pass membrane protein

Tissue Location

B-lymphocytes (PubMed:[26784544](#)). Antigen presenting cells (PubMed:[17182550](#)).

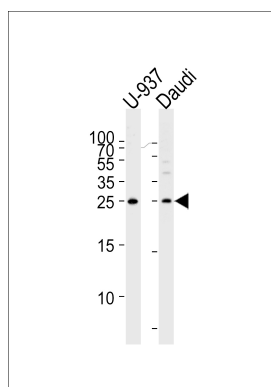
Background

The protein encoded by this gene is a member of the transmembrane 4 superfamily, also known as the tetraspanin family. Most of these members are cell-surface proteins that are characterized by the presence of four hydrophobic domains. The proteins mediate signal transduction events that play a role in the regulation of cell development, activation, growth and motility. This encoded protein is a cell surface glycoprotein that is known to complex with integrins and other transmembrane 4 superfamily proteins. It may play a role in T-cell-B-cell interactions. Alternate splicing results in multiple transcript variants encoding different isoforms.

References

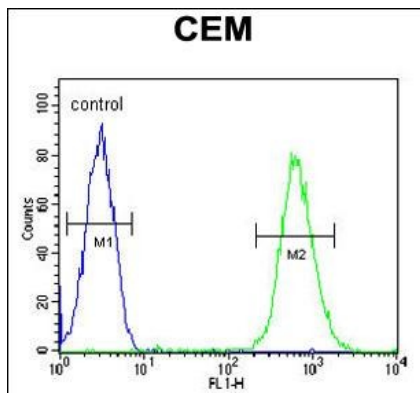
Bailey, S.D., et al. Diabetes Care 33(10):2250-2253(2010)
 Gartlan, K.H., et al. J. Immunol. 185(6):3158-3166(2010)
 Talmud, P.J., et al. Am. J. Hum. Genet. 85(5):628-642(2009)
 Zhao, X., et al. Blood 110(7):2569-2577(2007)
 Meyer-Wentrup, F., et al. J. Immunol. 178(1):154-162(2007)

Images



Western blot analysis of lysates from U-937, Daudi cell line (from left to right), using CD37 Antibody (Center)(Cat. #AP10711c). AP10711c was diluted at 1:1000 at each lane. A goat anti-rabbit IgG H&L(HRP) at 1:5000 dilution was used as the secondary antibody. Lysates at 35ug per lane.

CD37 Antibody (Center) (Cat. #AP10711c) flow cytometric analysis of CEM cells (right histogram) compared to a



negative control cell (left histogram).FITC-conjugated goat-anti-rabbit secondary antibodies were used for the analysis.

Please note: All products are 'FOR RESEARCH USE ONLY. NOT FOR USE IN DIAGNOSTIC OR THERAPEUTIC PROCEDURES'.