

BRIP1 Antibody (N-term)

Affinity Purified Rabbit Polyclonal Antibody (Pab)

Catalog # AP10665a

Product Information

Application	WB, E
Primary Accession	Q9BX63
Other Accession	NP_114432
Reactivity	Human, Mouse
Host	Rabbit
Clonality	Polyclonal
Isotype	Rabbit IgG
Clone Names	RB19065
Calculated MW	140867
Antigen Region	132-163

Additional Information

Gene ID	83990
Other Names	Fanconi anemia group J protein, Protein FACJ, ATP-dependent RNA helicase BRIP1, BRCA1-associated C-terminal helicase 1, BRCA1-interacting protein C-terminal helicase 1, BRCA1-interacting protein 1, BRIP1, BACH1, FANCJ
Target/Specificity	This BRIP1 antibody is generated from rabbits immunized with a KLH conjugated synthetic peptide between 132-163 amino acids from the N-terminal region of human BRIP1.
Dilution	WB~~1:1000 E~~Use at an assay dependent concentration.
Format	Purified polyclonal antibody supplied in PBS with 0.09% (W/V) sodium azide. This antibody is purified through a protein A column, followed by peptide affinity purification.
Storage	Maintain refrigerated at 2-8°C for up to 2 weeks. For long term storage store at -20°C in small aliquots to prevent freeze-thaw cycles.
Precautions	BRIP1 Antibody (N-term) is for research use only and not for use in diagnostic or therapeutic procedures.

Protein Information

Name	BRIP1 (HGNC:20473)
Function	DNA-dependent ATPase and 5'-3' DNA helicase required for the maintenance of chromosomal stability (PubMed: 11301010 ,

PubMed:[14983014](#), PubMed:[16116421](#), PubMed:[16153896](#), PubMed:[17596542](#), PubMed:[36608669](#)). Acts late in the Fanconi anemia pathway, after FANCD2 ubiquitination (PubMed:[14983014](#), PubMed:[16153896](#)). Involved in the repair of DNA double-strand breaks by homologous recombination in a manner that depends on its association with BRCA1 (PubMed:[14983014](#), PubMed:[16153896](#)). Involved in the repair of abasic sites at replication forks by promoting the degradation of DNA-protein cross-links: acts by catalyzing unfolding of HMCES DNA-protein cross-link via its helicase activity, exposing the underlying DNA and enabling cleavage of the DNA- protein adduct by the SPRTN metalloprotease (PubMed:[16116421](#), PubMed:[36608669](#)). Can unwind RNA:DNA substrates (PubMed:[14983014](#)). Unwinds G-quadruplex DNA; unwinding requires a 5'-single stranded tail (PubMed:[18426915](#), PubMed:[20639400](#)).

Cellular Location

Nucleus. Cytoplasm

Tissue Location

Ubiquitously expressed, with highest levels in testis.

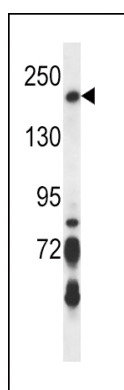
Background

BRIP1 is a member of the RecQ DEAH helicase family and interacts with the BRCT repeats of breast cancer, type 1 (BRCA1). The bound complex is important in the normal double-strand break repair function of breast cancer, type 1 (BRCA1).

References

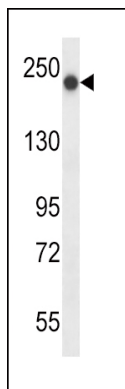
Ucisik-Akkaya, E., et al. Mol. Hum. Reprod. 16(10):770-777(2010)
 Bailey, S.D., et al. Diabetes Care (2010) In press :
 Solyom, S., et al. Fam. Cancer (2010) In press :
 Xie, J., et al. Oncogene 29(17):2499-2508(2010)
 Smith, I.M., et al. ORL J. Otorhinolaryngol. Relat. Spec. 72(1):44-50(2010)

Images



BRIP1 Antibody (N-term) (Cat. #AP10665a) western blot analysis in Jurkat cell line lysates (35ug/lane). This demonstrates the BRIP1 antibody detected the BRIP1 protein (arrow).

BRIP1 Antibody (N-term) (Cat. #AP10669c) western blot analysis in mouse bladder tissue lysates (35ug/lane). This demonstrates the BRIP1 antibody detected the BRIP1 protein (arrow).



Please note: All products are 'FOR RESEARCH USE ONLY. NOT FOR USE IN DIAGNOSTIC OR THERAPEUTIC PROCEDURES'.