

# HLA2 Antibody (N-term)

Affinity Purified Rabbit Polyclonal Antibody (Pab)

Catalog # AP10650a

## Product Information

---

<b>Application</b>	WB, IHC-P, FC, E
<b>Primary Accession</b>	<a href="#">Q9UM44</a>
<b>Other Accession</b>	<a href="#">NP_009003.1</a>
<b>Reactivity</b>	Human
<b>Host</b>	Rabbit
<b>Clonality</b>	Polyclonal
<b>Isotype</b>	Rabbit IgG
<b>Clone Names</b>	RB30079
<b>Calculated MW</b>	46850
<b>Antigen Region</b>	58-87

## Additional Information

---

<b>Gene ID</b>	11148
<b>Other Names</b>	HERV-H LTR-associating protein 2, Human endogenous retrovirus-H long terminal repeat-associating protein 2, HHLA2
<b>Target/Specificity</b>	This HHLA2 antibody is generated from rabbits immunized with a KLH conjugated synthetic peptide between 58-87 amino acids of human HHLA2.
<b>Dilution</b>	WB~~1:2000 IHC-P~~1:100~500 FC~~1:25 E~~Use at an assay dependent concentration.
<b>Format</b>	Purified polyclonal antibody supplied in PBS with 0.09% (W/V) sodium azide. This antibody is purified through a protein A column, followed by peptide affinity purification.
<b>Storage</b>	Maintain refrigerated at 2-8°C for up to 2 weeks. For long term storage store at -20°C in small aliquots to prevent freeze-thaw cycles.
<b>Precautions</b>	HHLA2 Antibody (N-term) is for research use only and not for use in diagnostic or therapeutic procedures.

## Protein Information

---

<b>Name</b>	HHLA2
<b>Function</b>	Through interaction with TMIGD2, costimulates T-cells in the context of TCR-mediated activation. Enhances T-cell proliferation and cytokine production via an AKT-dependent signaling cascade.

## Cellular Location

Membrane; Single-pass type I membrane protein

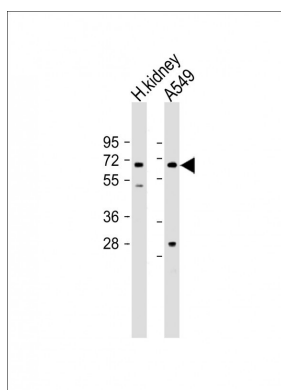
## Tissue Location

Expressed at high levels in colon, kidney, testis, lung and pancreas, and at lower levels in small intestine, liver and skeletal muscle. In immune cells, highly expressed in B-cells, dendritic cells and macrophages. Not detected in T-cells

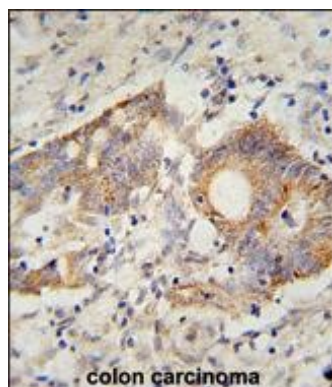
## References

Mager, D.L., et al. Genomics 59(3):255-263(1999)

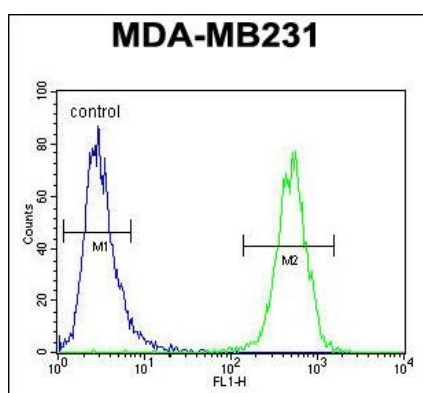
## Images



All lanes : Anti-HHLA2 Antibody (N-term) at 1:2000 dilution Lane 1: Human kidney lysate Lane 2: A549 whole cell lysate Lysates/proteins at 20 µg per lane. Secondary Goat Anti-Rabbit IgG, (H+L), Peroxidase conjugated at 1/10000 dilution. Predicted band size : 70 kDa Blocking/Dilution buffer: 5% NFDM/TBST.



HHLA2 Antibody (N-term) (Cat. #AP10650a) immunohistochemistry analysis in formalin fixed and paraffin embedded human colon carcinoma followed by peroxidase conjugation of the secondary antibody and DAB staining. This data demonstrates the use of the HHLA2 Antibody (N-term) for immunohistochemistry. Clinical relevance has not been evaluated.



HHLA2 Antibody (N-term) (Cat. #AP10650a) flow cytometric analysis of MDA-MB231 cells (right histogram) compared to a negative control cell (left histogram). FITC-conjugated goat-anti-rabbit secondary antibodies were used for the analysis.

## Citations

- [B7-H5/CD28H is a co-stimulatory pathway and correlates with improved prognosis in pancreatic ductal adenocarcinoma.](#)

Please note: All products are 'FOR RESEARCH USE ONLY. NOT FOR USE IN DIAGNOSTIC OR THERAPEUTIC PROCEDURES'.