

UBC9 (UBE2I) Antibody (N-term)

Purified Rabbit Polyclonal Antibody (Pab)

Catalog # AP1064a

Product Information

Application	WB, IHC-P, E
Primary Accession	P63279
Other Accession	P63282 , P63281 , P63280 , P63283 , Q9DDJ0 , Q9W6H5
Reactivity	Human
Predicted	Zebrafish, Chicken, Mouse, Rat, Xenopus
Host	Rabbit
Clonality	Polyclonal
Isotype	Rabbit IgG
Calculated MW	18007
Antigen Region	1-30

Additional Information

Gene ID	7329
Other Names	SUMO-conjugating enzyme UBC9, 632-, SUMO-protein ligase, Ubiquitin carrier protein 9, Ubiquitin carrier protein I, Ubiquitin-conjugating enzyme E2 I, Ubiquitin-protein ligase I, p18, UBE2I, UBC9, UBCE9
Target/Specificity	This UBC9 (UBE2I) antibody is generated from rabbits immunized with a KLH conjugated synthetic peptide between 1-30 amino acids from the N-terminal region of human UBC9 (UBE2I).
Dilution	WB~~1:1000 IHC-P~~1:100~500 E~~Use at an assay dependent concentration.
Format	Purified polyclonal antibody supplied in PBS with 0.09% (W/V) sodium azide. This antibody is prepared by Saturated Ammonium Sulfate (SAS) precipitation followed by dialysis against PBS.
Storage	Maintain refrigerated at 2-8°C for up to 2 weeks. For long term storage store at -20°C in small aliquots to prevent freeze-thaw cycles.
Precautions	UBC9 (UBE2I) Antibody (N-term) is for research use only and not for use in diagnostic or therapeutic procedures.

Protein Information

Name	UBE2I
Synonyms	UBC9, UBCE9

Function	Accepts the ubiquitin-like proteins SUMO1, SUMO2, SUMO3, SUMO4 and SUMO1P1/SUMO5 from the UBLE1A-UBLE1B E1 complex and catalyzes their covalent attachment to other proteins with the help of an E3 ligase such as RANBP2, CBX4 and ZNF451. Can catalyze the formation of poly-SUMO chains. Necessary for sumoylation of FOXL2 and KAT5. Essential for nuclear architecture and chromosome segregation. Sumoylates p53/TP53 at 'Lys-386'. Mediates sumoylation of ERCC6 which is essential for its transcription-coupled nucleotide excision repair activity (PubMed: 26620705). Sumoylates SHMT1 at 'Lys-38' or 'Lys-39' leading to RAN-dependent nuclear import of SHMT1 (PubMed: 17446168). Also sumoylates TYMS and DHFR (PubMed: 18067453).
Cellular Location	Nucleus. Cytoplasm Cytoplasm, perinuclear region Note=Mainly nuclear (By similarity). In spermatocytes, localizes in synaptonemal complexes (PubMed:8610150). Recruited by BCL11A into the nuclear body (By similarity). {ECO:0000250 UniProtKB:P63280, ECO:0000269 PubMed:8610150}
Tissue Location	Expressed in heart, skeletal muscle, pancreas, kidney, liver, lung, placenta and brain. Also expressed in testis and thymus.

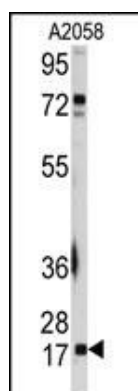
Background

UBE2I (Ubc9) is a member of the E2 family and is specific for the conjugation of SUMO to a variety of target proteins. SUMO conjugation to target proteins is mediated by a different, but analogous, pathway to ubiquitylation. This E2 is unusual in that it interacts directly with protein substrates that are modified by sumoylation, and may play a role in substrate recognition. UBE2I can mediate the conjugation of SUMO-1 to a variety of proteins including RanGAP1, I β B γ , and PML without the requirement of an E3 ligase. UBE2I is essential for nuclear architecture and chromosome segregation.

References

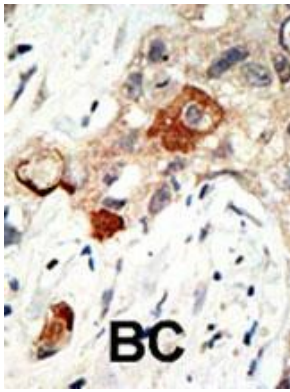
Biochem Biophys Res Commun. 2002 Aug 30;296(4):870-6.
 Genomics. 1996 Oct 15;37(2):183-6.
 Cytogenet Cell Genet. 1996;75(4):222-3.
 Cytogenet Cell Genet. 1996;72(1):86-9.

Images

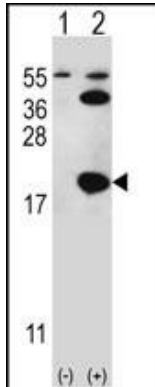


Western blot analysis of anti-UBE2I Antibody (N-term) (Cat.#AP1064a) in A2058 cell line lysates (35ug/lane). UBE2I(arrow) was detected using the purified Pab.

Formalin-fixed and paraffin-embedded human cancer tissue reacted with the primary antibody, which was peroxidase-conjugated to the secondary antibody, followed by AEC staining. This data demonstrates the use of this antibody for immunohistochemistry; clinical



relevance has not been evaluated. BC = breast carcinoma;
HC = hepatocarcinoma.



Western blot analysis of UBE2I (arrow) using rabbit polyclonal UBE2I Antibody (S7) (Cat.#AP1064a). 293 cell lysates (2 ug/lane) either nontransfected (Lane 1) or transiently transfected (Lane 2) with the UBE2I gene.

Citations

- [UBC9-dependent association between calnexin and protein tyrosine phosphatase 1B \(PTP1B\) at the endoplasmic reticulum.](#)
- [MDA5 is SUMOylated by PIAS2 in the upregulation of type I interferon signaling.](#)

Please note: All products are 'FOR RESEARCH USE ONLY. NOT FOR USE IN DIAGNOSTIC OR THERAPEUTIC PROCEDURES'.