

GTSF1 Antibody (Center)

Affinity Purified Rabbit Polyclonal Antibody (Pab)

Catalog # AP10572c

Product Information

Application	IHC-P, WB, E
Primary Accession	Q8WW33
Other Accession	Q9DAN6 , Q4R8M9 , Q3SZU0 , NP_653195.2
Reactivity	Human, Mouse
Predicted	Bovine, Monkey
Host	Rabbit
Clonality	Polyclonal
Isotype	Rabbit IgG
Clone Names	RB27814
Calculated MW	19266
Antigen Region	37-66

Additional Information

Gene ID	121355
Other Names	Gametocyte-specific factor 1, Protein FAM112B, GTSF1, FAM112B
Target/Specificity	This GTSF1 antibody is generated from rabbits immunized with a KLH conjugated synthetic peptide between 37-66 amino acids from the Central region of human GTSF1.
Dilution	IHC-P~~1:100~500 WB~~1:1000 E~~Use at an assay dependent concentration.
Format	Purified polyclonal antibody supplied in PBS with 0.09% (W/V) sodium azide. This antibody is purified through a protein A column, followed by peptide affinity purification.
Storage	Maintain refrigerated at 2-8°C for up to 2 weeks. For long term storage store at -20°C in small aliquots to prevent freeze-thaw cycles.
Precautions	GTSF1 Antibody (Center) is for research use only and not for use in diagnostic or therapeutic procedures.

Protein Information

Name	GTSF1
Synonyms	FAM112B
Function	Required for spermatogenesis and is involved in the suppression of

retrotransposon transcription in male germ cells.

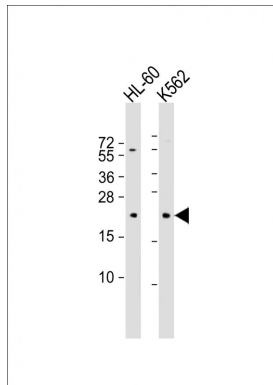
Cellular Location

Cytoplasm {ECO:0000250 | UniProtKB:Q9DAN6}.

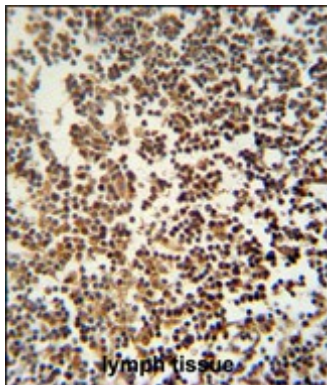
References

Gerhard, D.S., et al. Genome Res. 14 (10B), 2121-2127 (2004) :

Images



All lanes : Anti-GTSF1 Antibody (Center) at 1:1000 dilution
Lane 1: HL-60 whole cell lysate Lane 2: K562 whole cell lysate
Lysates/proteins at 20 µg per lane. Secondary Goat Anti-Rabbit IgG, (H+L), Peroxidase conjugated at 1/10000 dilution. Predicted band size : 19 kDa
Blocking/Dilution buffer: 5% NFDM/TBST.



GTSF1 antibody (Center) (Cat. #AP10572c) immunohistochemistry analysis in formalin fixed and paraffin embedded human lymph tissue followed by peroxidase conjugation of the secondary antibody and DAB staining. This data demonstrates the use of the GTSF1 antibody (Center) for immunohistochemistry. Clinical relevance has not been evaluated.

Please note: All products are 'FOR RESEARCH USE ONLY. NOT FOR USE IN DIAGNOSTIC OR THERAPEUTIC PROCEDURES'.