

FSTL1 Antibody (C-term)

Affinity Purified Rabbit Polyclonal Antibody (Pab)

Catalog # AP10534b

Product Information

Application	WB, IHC-P, FC, E
Primary Accession	Q12841
Other Accession	Q9GKY0 , NP_009016.1
Reactivity	Human, Rat, Mouse
Predicted	Monkey
Host	Rabbit
Clonality	Polyclonal
Isotype	Rabbit IgG
Clone Names	RB28536
Calculated MW	34986
Antigen Region	280-308

Additional Information

Gene ID	11167
Other Names	Follistatin-related protein 1, Follistatin-like protein 1, FSTL1, FRP
Target/Specificity	This FSTL1 antibody is generated from rabbits immunized with a KLH conjugated synthetic peptide between 280-308 amino acids from the C-terminal region of human FSTL1.
Dilution	WB~~1:1000 IHC-P~~1:100~500 FC~~1:10~50 E~~Use at an assay dependent concentration.
Format	Purified polyclonal antibody supplied in PBS with 0.09% (W/V) sodium azide. This antibody is purified through a protein A column, followed by peptide affinity purification.
Storage	Maintain refrigerated at 2-8°C for up to 2 weeks. For long term storage store at -20°C in small aliquots to prevent freeze-thaw cycles.
Precautions	FSTL1 Antibody (C-term) is for research use only and not for use in diagnostic or therapeutic procedures.

Protein Information

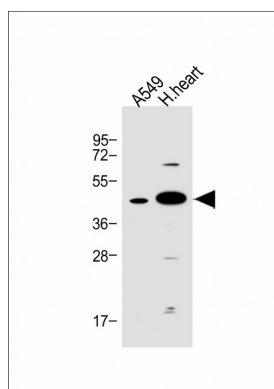
Name	FSTL1
Synonyms	FRP

Function	Secreted glycoprotein that is involved in various physiological processes, such as angiogenesis, regulation of the immune response, cell proliferation and differentiation (PubMed: 22265692 , PubMed: 29212066). Plays a role in the development of the central nervous system, skeletal system, lungs, and ureter (By similarity). Promotes endothelial cell survival, migration and differentiation into network structures in an AKT-dependent manner. Also promotes survival of cardiac myocytes (By similarity). Initiates various signaling cascades by activating different receptors on the cell surface such as DIP2A, TLR4 or BMP receptors (PubMed: 20054002 , PubMed: 22265692).
Cellular Location	Secreted.
Tissue Location	Overexpressed in synovial tissues from rheumatoid arthritis (PubMed:15638044).

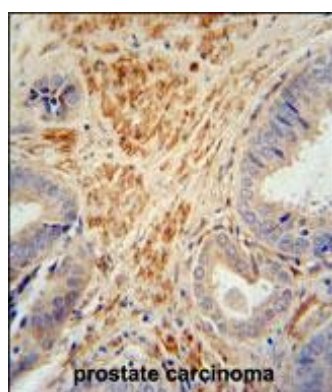
References

Kai, N., et al. Brain Res. 1073-1074, 60-70 (2006) :
Venter, J.C., et al. Science 291(5507):1304-1351(2001)

Images

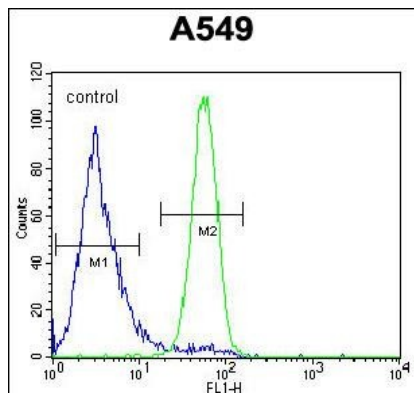


All lanes : Anti-FSTL1 Antibody (C-term) at 1:1000 dilution
Lane 1: A549 whole cell lysate Lane 2: human heart lysate
Lysates/proteins at 20 µg per lane. Secondary Goat Anti-Rabbit IgG, (H+L), Peroxidase conjugated at 1/10000 dilution. Predicted band size : 35 kDa Blocking/Dilution buffer: 5% NFDM/TBST.



FSTL1 antibody (C-term) (Cat. #AP10534b) immunohistochemistry analysis in formalin fixed and paraffin embedded human prostate carcinoma followed by peroxidase conjugation of the secondary antibody and DAB staining. This data demonstrates the use of the FSTL1 antibody (C-term) for immunohistochemistry. Clinical relevance has not been evaluated.

FSTL1 Antibody (C-term) (Cat. #AP10534b) flow cytometric analysis of A549 cells (right histogram) compared to a negative control cell (left histogram). FITC-conjugated goat-anti-rabbit secondary antibodies were used for the analysis.



Citations

- [Determination of follistatin-like protein 1 expression in colorectal cancer and its association with clinical outcomes](#)
- [Follistatin-like protein 1 plays a tumor suppressor role in clear-cell renal cell carcinoma](#)
- [A genetic polymorphism affects the risk and prognosis of renal cell carcinoma: association with follistatin-like protein 1 expression](#)

Please note: All products are 'FOR RESEARCH USE ONLY. NOT FOR USE IN DIAGNOSTIC OR THERAPEUTIC PROCEDURES'.