

CF150 Antibody (Center)

Affinity Purified Rabbit Polyclonal Antibody (Pab)

Catalog # AP10510c

Product Information

Application	WB, FC, E
Primary Accession	Q8N884
Other Accession	NP_612450.2
Reactivity	Human, Mouse
Host	Rabbit
Clonality	Polyclonal
Isotype	Rabbit IgG
Clone Names	RB28628
Calculated MW	58814
Antigen Region	266-295

Additional Information

Gene ID	115004
Other Names	Cyclic GMP-AMP synthase, cGAMP synthase, cGAS, h-cGAS, Mab-21 domain-containing protein 1, MB21D1, C6orf150
Target/Specificity	This CF150 antibody is generated from rabbits immunized with a KLH conjugated synthetic peptide between 266-295 amino acids from the Central region of human CF150.
Dilution	WB~~1:1000 FC~~1:25 E~~Use at an assay dependent concentration.
Format	Purified polyclonal antibody supplied in PBS with 0.05% (V/V) Proclin 300. This antibody is prepared by Saturated Ammonium Sulfate (SAS) precipitation followed by dialysis against PBS.
Storage	Maintain refrigerated at 2-8°C for up to 2 weeks. For long term storage store at -20°C in small aliquots to prevent freeze-thaw cycles.
Precautions	CF150 Antibody (Center) is for research use only and not for use in diagnostic or therapeutic procedures.

Protein Information

Name	CGAS {ECO:0000303 PubMed:23258413, ECO:0000312 HGNC:HGNC:21367}
Function	Nucleotidyltransferase that catalyzes the formation of cyclic GMP-AMP (2',3'-cGAMP) from ATP and GTP and plays a key role in innate immunity (PubMed: 21478870 , PubMed: 23258413 , PubMed: 23707061 ,

PubMed:[23707065](#), PubMed:[23722159](#), PubMed:[24077100](#), PubMed:[24116191](#), PubMed:[24462292](#), PubMed:[25131990](#), PubMed:[26300263](#), PubMed:[29976794](#), PubMed:[30799039](#), PubMed:[31142647](#), PubMed:[32814054](#), PubMed:[33273464](#), PubMed:[33542149](#), PubMed:[37217469](#), PubMed:[37802025](#)). Catalysis involves both the formation of a 2',5' phosphodiester linkage at the GpA step and the formation of a 3',5' phosphodiester linkage at the ApG step, producing c[G(2',5')pA(3',5')p] (PubMed:[28214358](#), PubMed:[28363908](#)). Acts as a key DNA sensor: directly binds double-stranded DNA (dsDNA), inducing the formation of liquid-like droplets in which CGAS is activated, leading to synthesis of 2',3'-cGAMP, a second messenger that binds to and activates STING1, thereby triggering type-I interferon production (PubMed:[28314590](#), PubMed:[28363908](#), PubMed:[29976794](#), PubMed:[32817552](#), PubMed:[33230297](#), PubMed:[33606975](#), PubMed:[35322803](#), PubMed:[35438208](#), PubMed:[35460603](#), PubMed:[35503863](#)). Preferentially recognizes and binds curved long dsDNAs of a minimal length of 40 bp (PubMed:[30007416](#)). Acts as a key foreign DNA sensor, the presence of double-stranded DNA (dsDNA) in the cytoplasm being a danger signal that triggers the immune responses (PubMed:[28363908](#)). Has antiviral activity by sensing the presence of dsDNA from DNA viruses in the cytoplasm (PubMed:[28363908](#), PubMed:[35613581](#)). Also acts as an innate immune sensor of infection by retroviruses, such as HIV-2, by detecting the presence of reverse-transcribed DNA in the cytosol (PubMed:[23929945](#), PubMed:[24269171](#), PubMed:[30270045](#), PubMed:[32852081](#)). In contrast, HIV-1 is poorly sensed by CGAS, due to its capsid that cloaks viral DNA from CGAS detection (PubMed:[24269171](#), PubMed:[30270045](#), PubMed:[32852081](#)). Detection of retroviral reverse-transcribed DNA in the cytosol may be indirect and be mediated via interaction with PQBP1, which directly binds reverse-transcribed retroviral DNA (PubMed:[26046437](#)). Also detects the presence of DNA from bacteria, such as M.tuberculosis (PubMed:[26048138](#)). 2',3'-cGAMP can be transferred from producing cells to neighboring cells through gap junctions, leading to promote STING1 activation and convey immune response to connecting cells (PubMed:[24077100](#), PubMed:[31992625](#)). 2',3'-cGAMP can also be transferred between cells by virtue of packaging within viral particles contributing to IFN-induction in newly infected cells in a cGAS- independent but STING1-dependent manner (PubMed:[26229115](#)). Also senses the presence of neutrophil extracellular traps (NETs) that are translocated to the cytosol following phagocytosis, leading to synthesis of 2',3'-cGAMP (PubMed:[33688080](#)). In addition to foreign DNA, can also be activated by endogenous nuclear or mitochondrial DNA (PubMed:[28738408](#), PubMed:[28759889](#), PubMed:[31299200](#), PubMed:[33031745](#), PubMed:[33230297](#)). When self-DNA leaks into the cytosol during cellular stress (such as mitochondrial stress, SARS-CoV-2 infection causing severe COVID-19 disease, DNA damage, mitotic arrest or senescence), or is present in form of cytosolic micronuclei, CGAS is activated leading to a state of sterile inflammation (PubMed:[28738408](#), PubMed:[28759889](#), PubMed:[31299200](#), PubMed:[33031745](#), PubMed:[33230297](#), PubMed:[35045565](#)). Acts as a regulator of cellular senescence by binding to cytosolic chromatin fragments that are present in senescent cells, leading to trigger type-I interferon production via STING1 and promote cellular senescence (By similarity). Also involved in the inflammatory response to genome instability and double-stranded DNA breaks: acts by localizing to micronuclei arising from genome instability (PubMed:[28738408](#), PubMed:[28759889](#)). Micronuclei, which are frequently found in cancer cells, consist of chromatin surrounded by their own nuclear membrane: following breakdown of the micronuclear envelope, a process associated with chromothripsis, CGAS binds self-DNA exposed to the cytosol, leading to 2',3'-cGAMP synthesis and subsequent activation of STING1 and type-I interferon production (PubMed:[28738408](#), PubMed:[28759889](#)). Activated in response to prolonged mitotic arrest, promoting mitotic cell death

(PubMed:[31299200](#)). In a healthy cell, CGAS is however kept inactive even in cellular events that directly expose it to self-DNA, such as mitosis, when cGAS associates with chromatin directly after nuclear envelope breakdown or remains in the form of postmitotic persistent nuclear cGAS pools bound to chromatin (PubMed:[31299200](#), PubMed:[33542149](#)). Nuclear CGAS is inactivated by chromatin via direct interaction with nucleosomes, which block CGAS from DNA binding and thus prevent CGAS-induced autoimmunity (PubMed:[31299200](#), PubMed:[32911482](#), PubMed:[32912999](#), PubMed:[33051594](#), PubMed:[33542149](#)). Also acts as a suppressor of DNA repair in response to DNA damage: inhibits homologous recombination repair by interacting with PARP1, the CGAS-PARP1 interaction leading to impede the formation of the PARP1-TIMELESS complex (PubMed:[30356214](#), PubMed:[31544964](#)). In addition to DNA, also sense translation stress: in response to translation stress, translocates to the cytosol and associates with collided ribosomes, promoting its activation and triggering type-I interferon production (PubMed:[34111399](#)). In contrast to other mammals, human CGAS displays species-specific mechanisms of DNA recognition and produces less 2',3'-cGAMP, allowing a more fine-tuned response to pathogens (PubMed:[30007416](#)).

Cellular Location

Nucleus. Chromosome. Cell membrane; Peripheral membrane protein. Cytoplasm, cytosol. Note=Mainly localizes in the nucleus, and at low level in the cytosol (PubMed:[31544964](#), PubMed:[31808743](#)). On chromosomes, enriched on centromeric satellite and LINE DNA repeat elements (PubMed:[30811988](#)). Exported from the nucleus to the cytosol in a XPO1/CRM1 via the nuclear export signal in response to DNA stimulation (PubMed:[33406424](#)). Outside the nucleus, localizes at the cell membrane as a peripheral membrane protein in resting conditions: association to the cell membrane is mediated via binding to phosphatidylinositol 4,5-bisphosphate (PtdIns(4,5)P₂) (PubMed:[30827685](#)). Localization at the cell membrane is required to limit the recognition of self-DNA (PubMed:[30827685](#)). Following detection of double-stranded DNA (dsDNA), released from the cell membrane into the cytosol in order to signal (PubMed:[30827685](#)). Upon transfection with dsDNA forms punctate structures that co-localize with DNA and Beclin-1 (BECN1) (PubMed:[26048138](#)). Phosphorylation at Tyr-215 promotes cytosolic retention (PubMed:[30356214](#)). In response to translation stress, translocates to the cytosol and associates with collided ribosomes (PubMed:[34111399](#)).

Tissue Location

Expressed in the monocytic cell line THP1.

Background

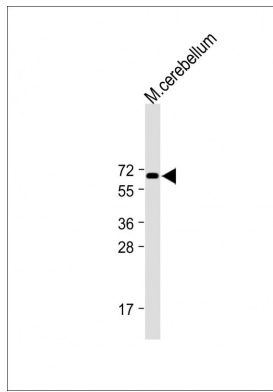
The exact function of C6orf150 remains unknown.

References

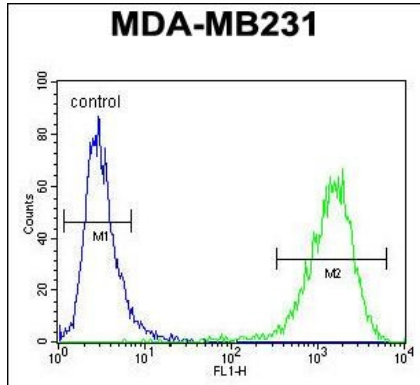
Rush, J., et al. Nat. Biotechnol. 23(1):94-101(2005)
 Rush, J., et al. Nat. Biotechnol. 23(1):94-101(2005)
 Mungall, A.J., et al. Nature 425(6960):805-811(2003)

Images

All lanes : Anti-CF150 Antibody (Center) at 1:1000 dilution
 Lane 1: mouse cerebellum lysate Lysates/proteins at 20
 µg per lane. Secondary Goat Anti-Rabbit IgG, (H+L),
 Peroxidase conjugated (ASP1615) at 1/15000 dilution.



Observed band size : 65kDa Blocking/Dilution buffer: 5% NFDM/TBST.



CF150 Antibody (Center) (Cat. #AP10510c) flow cytometric analysis of MDA-MB231 cells (right histogram) compared to a negative control cell (left histogram). FITC-conjugated goat-anti-rabbit secondary antibodies were used for the analysis.

Citations

- [Cellular sensing of extracellular purine nucleosides triggers an innate IFN- \$\beta\$ response](#)
- [cGAS-STING Signaling Regulates Initial Innate Control of Cytomegalovirus Infection](#)
- [The DNA Sensor, Cyclic GMP-AMP Synthase, Is Essential for Induction of IFN- \$\beta\$ during Chlamydia trachomatis Infection](#)

Please note: All products are 'FOR RESEARCH USE ONLY. NOT FOR USE IN DIAGNOSTIC OR THERAPEUTIC PROCEDURES'.