

LMOD2 Antibody (N-term)

Affinity Purified Rabbit Polyclonal Antibody (Pab)

Catalog # AP10364a

Product Information

Application	WB, IHC-P, E
Primary Accession	Q6P5Q4
Other Accession	A1A5Q0 , Q3UHZ5 , NP_997046.1
Reactivity	Human, Mouse
Predicted	Rat
Host	Rabbit
Clonality	Polyclonal
Isotype	Rabbit IgG
Clone Names	RB27976
Calculated MW	61675
Antigen Region	60-88

Additional Information

Gene ID	442721
Other Names	Leiomodrin-2, Cardiac leiomodrin, C-LMOD, LMOD2
Target/Specificity	This LMOD2 antibody is generated from rabbits immunized with a KLH conjugated synthetic peptide between 60-88 amino acids from the N-terminal region of human LMOD2.
Dilution	WB~~1:1000 IHC-P~~1:100~500 E~~Use at an assay dependent concentration.
Format	Purified polyclonal antibody supplied in PBS with 0.09% (W/V) sodium azide. This antibody is purified through a protein A column, followed by peptide affinity purification.
Storage	Maintain refrigerated at 2-8°C for up to 2 weeks. For long term storage store at -20°C in small aliquots to prevent freeze-thaw cycles.
Precautions	LMOD2 Antibody (N-term) is for research use only and not for use in diagnostic or therapeutic procedures.

Protein Information

Name	LMOD2
Function	Mediates nucleation of actin filaments and thereby promotes actin polymerization (PubMed: 18403713 , PubMed: 25250574 , PubMed: 26370058 , PubMed: 26417072). Plays a role in the regulation of actin filament length (By

similarity). Required for normal sarcomere organization in the heart, and for normal heart function (PubMed:[18403713](#)).

Cellular Location

Cytoplasm, myofibril, sarcomere. Cytoplasm, myofibril. Cytoplasm, myofibril, sarcomere, M line. Cytoplasm, cytoskeleton. Note=Colocalizes with actin filaments in sarcomeres. Detected close to the M line

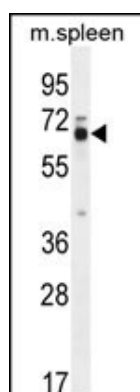
Tissue Location

Specifically expressed in heart and skeletal muscles, with higher levels in heart (at protein level). Not expressed in other tissues.

References

Chereau, D., et al. Science 320(5873):239-243(2008)
Lane, H.Y., et al. J Clin Psychopharmacol 26(2):128-134(2006)
Conley, C.A., et al. Genomics 73(2):127-139(2001)

Images



LMOD2 Antibody (N-term) (Cat. #AP10364a) western blot analysis in mouse spleen tissue lysates (35ug/lane). This demonstrates the LMOD2 antibody detected the LMOD2 protein (arrow).



LMOD2 antibody (N-term) (Cat. #AP10364a) immunohistochemistry analysis in formalin fixed and paraffin embedded human skeletal muscle followed by peroxidase conjugation of the secondary antibody and DAB staining. This data demonstrates the use of the LMOD2 antibody (N-term) for immunohistochemistry. Clinical relevance has not been evaluated.

Citations

- [Leiomodlin-3-deficient mice display nemaline myopathy with fast-myofiber atrophy.](#)

Please note: All products are 'FOR RESEARCH USE ONLY. NOT FOR USE IN DIAGNOSTIC OR THERAPEUTIC PROCEDURES'.