

# ZDHHC1 Antibody (N-term)

Affinity Purified Rabbit Polyclonal Antibody (Pab)

Catalog # AP10315a

## Product Information

---

Application	WB, E
Primary Accession	<a href="#">Q8WTX9</a>
Other Accession	<a href="#">Q8R0N9</a> , <a href="#">NP_037436.1</a>
Reactivity	Human, Mouse
Host	Rabbit
Clonality	Polyclonal
Isotype	Rabbit IgG
Clone Names	RB27847
Calculated MW	54818
Antigen Region	14-43

## Additional Information

---

Gene ID	29800
Other Names	Probable palmitoyltransferase ZDHHC1, DHHC domain-containing cysteine-rich protein 1, Zinc finger DHHC domain-containing protein 1, DHHC-1, Zinc finger protein 377, ZDHHC1, C16orf1, ZNF377
Target/Specificity	This ZDHHC1 antibody is generated from rabbits immunized with a KLH conjugated synthetic peptide between 14-43 amino acids from the N-terminal region of human ZDHHC1.
Dilution	WB~~1:1000 E~~Use at an assay dependent concentration.
Format	Purified polyclonal antibody supplied in PBS with 0.09% (W/V) sodium azide. This antibody is purified through a protein A column, followed by peptide affinity purification.
Storage	Maintain refrigerated at 2-8°C for up to 2 weeks. For long term storage store at -20°C in small aliquots to prevent freeze-thaw cycles.
Precautions	ZDHHC1 Antibody (N-term) is for research use only and not for use in diagnostic or therapeutic procedures.

## Protein Information

---

Name	ZDHHC1 {ECO:0000303 PubMed:39173637, ECO:0000312 HGNC:HGNC:17916}
Function	Palmitoyltransferase that catalyzes the addition of palmitate onto various

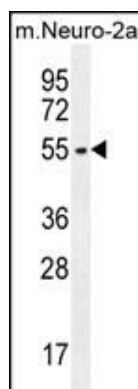
protein substrates, such as NCDN and NLRP3 (PubMed:[39173637](#)). Has a palmitoyltransferase activity toward NCDN and regulates NCDN association with endosome membranes through this palmitoylation (By similarity). Acts as an activator of the NLRP3 inflammasome by mediating palmitoylation of 'Cys-130' and 'Cys-958' of NLRP3, thereby promoting NLRP3 phosphorylation and activation by NEK7 (PubMed:[39173637](#)).

<b>Cellular Location</b>	Endosome membrane {ECO:0000250 UniProtKB:Q8R0N9}; Multi-pass membrane protein. Endoplasmic reticulum membrane; Multi-pass membrane protein. Golgi apparatus
<b>Tissue Location</b>	Widely expressed with significant expression in heart, brain, placenta, lung, liver, kidney, testis, thymus and small intestine (PubMed:16647879). Expressed at lower levels in adult pancreas and lung (PubMed:10395086).

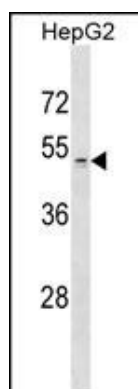
## References

Feng, T., et al. Hum. Genet. 128(3):269-280(2010)  
 Putilina, T., et al. Mol. Cell. Biochem. 195 (1-2), 219-226 (1999) :

## Images



ZDHHC1 Antibody (N-term) (Cat. #AP10315a) western blot analysis in mouse Neuro-2a cell line lysates (35ug/lane). This demonstrates the ZDHHC1 antibody detected the ZDHHC1 protein (arrow).



ZDHHC1 Antibody (N-term) (Cat. #AP10315a) western blot analysis in HepG2 cell line lysates (35ug/lane). This demonstrates the ZDHHC1 antibody detected the ZDHHC1 protein (arrow).

## Citations

- [DNA methylation downregulated ZDHHC1 suppresses tumor growth by altering cellular metabolism and inducing oxidative/ER stress-mediated apoptosis and pyroptosis](#)

Please note: All products are 'FOR RESEARCH USE ONLY. NOT FOR USE IN DIAGNOSTIC OR THERAPEUTIC PROCEDURES'.