

# IGF2BP2 Antibody (C-term)

Affinity Purified Rabbit Polyclonal Antibody (Pab)  
Catalog # AP10127b

## Product Information

---

<b>Application</b>	WB, IHC-P, FC, E
<b>Primary Accession</b>	<a href="#">Q9Y6M1</a>
<b>Other Accession</b>	<a href="#">Q5SF07</a> , <a href="#">NP_001007226.1</a> , <a href="#">NP_006539.3</a>
<b>Reactivity</b>	Human, Mouse
<b>Predicted</b>	Mouse
<b>Host</b>	Rabbit
<b>Clonality</b>	Polyclonal
<b>Isotype</b>	Rabbit IgG
<b>Clone Names</b>	RB21527
<b>Antigen Region</b>	530-556

## Additional Information

---

<b>Other Names</b>	Insulin-like growth factor 2 mRNA-binding protein 2, IGF2 mRNA-binding protein 2, IMP-2, Hepatocellular carcinoma autoantigen p62, IGF-II mRNA-binding protein 2, VICKZ family member 2, IGF2BP2, IMP2, VICKZ2
<b>Target/Specificity</b>	This IGF2BP2 antibody is generated from rabbits immunized with a KLH conjugated synthetic peptide between 530-556 amino acids from the C-terminal region of human IGF2BP2.
<b>Dilution</b>	WB~~1:1000 IHC-P~~1:100~500 FC~~1:10~50 E~~Use at an assay dependent concentration.
<b>Format</b>	Purified polyclonal antibody supplied in PBS with 0.09% (W/V) sodium azide. This antibody is purified through a protein A column, followed by peptide affinity purification.
<b>Storage</b>	Maintain refrigerated at 2-8°C for up to 2 weeks. For long term storage store at -20°C in small aliquots to prevent freeze-thaw cycles.
<b>Precautions</b>	IGF2BP2 Antibody (C-term) is for research use only and not for use in diagnostic or therapeutic procedures.

## Protein Information

---

### Background

---

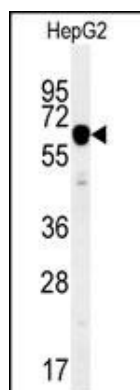
This gene encodes a member of the IGF-II mRNA-binding protein (IMP) family. The protein encoded by this gene contains several four KH domains and two RRM domains. It functions by binding to the 5' UTR of the

insulin-like growth factor 2 (IGF2) mRNA and regulating IGF2 translation. Alternate transcriptional splice variants, encoding different isoforms, have been characterized.

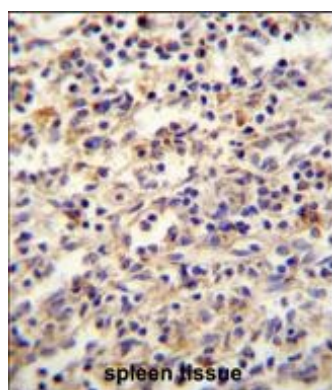
## References

Bailey, S.D., et al. *Diabetes Care* 33(10):2250-2253(2010)  
Pechlivanis, S., et al. *Arterioscler. Thromb. Vasc. Biol.* 30(9):1867-1872(2010)  
Heni, M., et al. *Diabetes* (2010) In press :  
Rodriguez, S., et al. *Growth Horm. IGF Res.* 20(4):310-318(2010)  
Voight, B.F., et al. *Nat. Genet.* 42(7):579-589(2010)

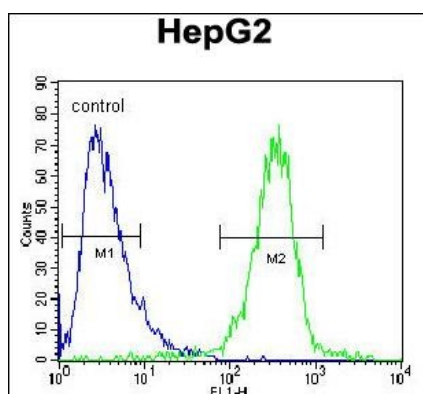
## Images



IGF2BP2 Antibody (C-term) (Cat. #AP10127b) western blot analysis in HepG2 cell line lysates (35ug/lane). This demonstrates the IGF2BP2 antibody detected the IGF2BP2 protein (arrow).



IGF2BP2 antibody(C-term) (Cat. #AP10127b) immunohistochemistry analysis in formalin fixed and paraffin embedded human spleen tissue followed by peroxidase conjugation of the secondary antibody and DAB staining. This data demonstrates the use of the IGF2BP2 antibody(C-term) for immunohistochemistry. Clinical relevance has not been evaluated.



IGF2BP2 Antibody (C-term) (Cat. #AP10127b) flow cytometric analysis of HepG2 cells (right histogram) compared to a negative control cell (left histogram). FITC-conjugated goat-anti-rabbit secondary antibodies were used for the analysis.

Please note: All products are 'FOR RESEARCH USE ONLY. NOT FOR USE IN DIAGNOSTIC OR THERAPEUTIC PROCEDURES'.