

LAPTM5 Antibody (N-term)

Affinity Purified Rabbit Polyclonal Antibody (Pab)
Catalog # AP10077a

Product Information

Application	WB, IHC-P, FC, E
Primary Accession	Q13571
Other Accession	Q2KJA5 , NP_006753.1
Reactivity	Human
Predicted	Bovine
Host	Rabbit
Clonality	Polyclonal
Isotype	Rabbit IgG
Clone Names	RB27746
Calculated MW	29937
Antigen Region	23-49

Additional Information

Gene ID	7805
Other Names	Lysosomal-associated transmembrane protein 5, Lysosomal-associated multitransmembrane protein 5, Retinoic acid-inducible E3 protein, LAPTM5, KIAA0085
Target/Specificity	This LAPTM5 antibody is generated from rabbits immunized with a KLH conjugated synthetic peptide between 23-49 amino acids from the N-terminal region of human LAPTM5.
Dilution	WB~~1:1000 IHC-P~~1:100~500 FC~~1:10~50 E~~Use at an assay dependent concentration.
Format	Purified polyclonal antibody supplied in PBS with 0.09% (W/V) sodium azide. This antibody is purified through a protein A column, followed by peptide affinity purification.
Storage	Maintain refrigerated at 2-8°C for up to 2 weeks. For long term storage store at -20°C in small aliquots to prevent freeze-thaw cycles.
Precautions	LAPTM5 Antibody (N-term) is for research use only and not for use in diagnostic or therapeutic procedures.

Protein Information

Name	LAPTM5
-------------	--------

Synonyms

KIAA0085

Function

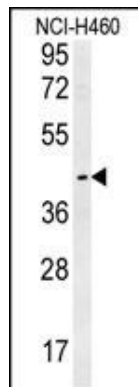
May have a special functional role during embryogenesis and in adult hematopoietic cells.

Cellular Location

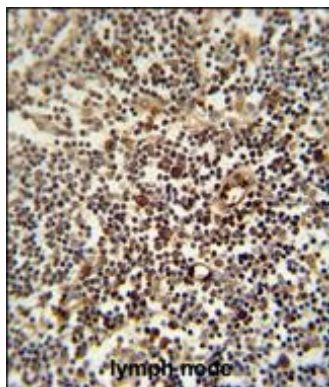
Lysosome membrane; Multi-pass membrane protein

Tissue Location

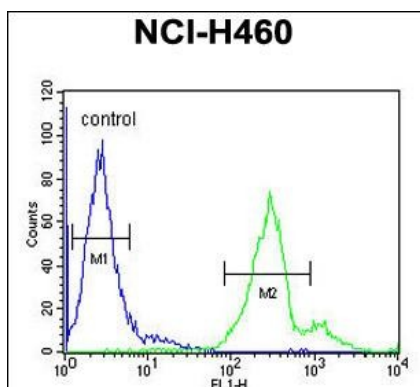
Preferentially expressed in adult hematopoietic tissues. High levels in lymphoid and myeloid tissues. Highly expressed in peripheral blood leukocytes, thymus, spleen and lung, followed by placenta, liver and kidney.

Images

LAPTM5 Antibody (N-term) (Cat. #AP10077a) western blot analysis in NCI-H460 cell line lysates (35ug/lane). This demonstrates the LAPTM5 antibody detected the LAPTM5 protein (arrow).

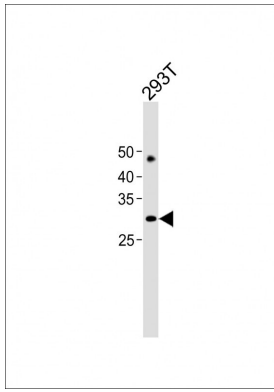


LAPTM5 antibody (N-term) (Cat. #AP10077a) immunohistochemistry analysis in formalin fixed and paraffin embedded human lymph node followed by peroxidase conjugation of the secondary antibody and DAB staining. This data demonstrates the use of the LAPTM5 antibody (N-term) for immunohistochemistry. Clinical relevance has not been evaluated.



LAPTM5 Antibody (N-term) (Cat. #AP10077a) flow cytometric analysis of NCI-H460 cells (right histogram) compared to a negative control cell (left histogram). FITC-conjugated goat-anti-rabbit secondary antibodies were used for the analysis.

All lanes: Anti-LAPTM5 Antibody (N-term) at 1:2000 dilution + 293T whole cell lysates/proteins at 20 µg per lane. Secondary: Goat Anti-Rabbit IgG, (H+L), Peroxidase conjugated (ASP1615) at 1/15000 dilution. Observed band size: 30 KDa Blocking/Dilution buffer: 5% NFD/DM/TBST.



Please note: All products are 'FOR RESEARCH USE ONLY. NOT FOR USE IN DIAGNOSTIC OR THERAPEUTIC PROCEDURES'.