

# RTL1 Antibody (C-term)

Affinity Purified Rabbit Polyclonal Antibody (Pab)

Catalog # AP10002b

## Product Information

---

<b>Application</b>	WB, E
<b>Primary Accession</b>	<a href="#">A6NKG5</a>
<b>Other Accession</b>	<a href="#">XP_001716834.1</a>
<b>Reactivity</b>	Human
<b>Host</b>	Rabbit
<b>Clonality</b>	Polyclonal
<b>Isotype</b>	Rabbit IgG
<b>Clone Names</b>	RB27543
<b>Calculated MW</b>	155048
<b>Antigen Region</b>	1330-1358

## Additional Information

---

<b>Gene ID</b>	388015
<b>Other Names</b>	Retrotransposon-like protein 1, Mammalian retrotransposon derived protein 1, Paternally expressed gene 11 protein, Retrotransposon-derived protein PEG11, RTL1, MAR1, MART1, PEG11
<b>Target/Specificity</b>	This RTL1 antibody is generated from rabbits immunized with a KLH conjugated synthetic peptide between 1330-1358 amino acids from the C-terminal region of human RTL1.
<b>Dilution</b>	WB~~1:1000 E~~Use at an assay dependent concentration.
<b>Format</b>	Purified polyclonal antibody supplied in PBS with 0.05% (V/V) Proclin 300. This antibody is purified through a protein A column, followed by peptide affinity purification.
<b>Storage</b>	Maintain refrigerated at 2-8°C for up to 2 weeks. For long term storage store at -20°C in small aliquots to prevent freeze-thaw cycles.
<b>Precautions</b>	RTL1 Antibody (C-term) is for research use only and not for use in diagnostic or therapeutic procedures.

## Protein Information

---

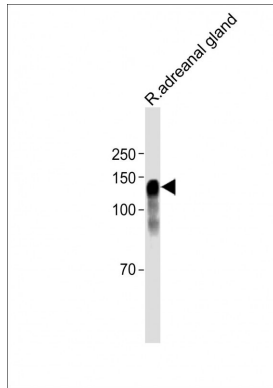
<b>Name</b>	RTL1
<b>Synonyms</b>	MAR1, MART1, PEG11

**Function** Plays an essential role in capillaries endothelial cells for the maintenance of feto-maternal interface and for development of the placenta.

**Cellular Location** Membrane; Multi-pass membrane protein

## Images

---



All lanes: Anti-RTL1 Antibody (C-term) at 1:1000 dilution + Rat adreanal gland lysate Lysates/proteins at 20 µg per lane. Secondary: Goat Anti-Rabbit IgG, (H+L), Peroxidase conjugated (ASP1615) at 1/15000 dilution. Observed band size: 130 KDa Blocking/Dilution buffer: 5% NFDM/TBST.

Please note: All products are 'FOR RESEARCH USE ONLY. NOT FOR USE IN DIAGNOSTIC OR THERAPEUTIC PROCEDURES'.