

# CD191

Purified Mouse Monoclonal Antibody

Catalog # AO2724a

## Product Information

---

<b>Application</b>	WB, IHC, ICC, E
<b>Primary Accession</b>	<a href="#">P32246</a>
<b>Reactivity</b>	Human
<b>Host</b>	Mouse
<b>Clonality</b>	Monoclonal
<b>Clone Names</b>	8E10F9
<b>Isotype</b>	Mouse IgG1
<b>Calculated MW</b>	41173
<b>Immunogen</b>	Purified recombinant fragment of human CD191 (AA: extra mix) expressed in E. Coli.
<b>Formulation</b>	Purified antibody in PBS with 0.05% sodium azide

## Additional Information

---

<b>Gene ID</b>	1230
<b>Other Names</b>	CCR1; CKR1; CKR-1; HM145; CMKBR1; MIP1aR; SCYAR1
<b>Dilution</b>	WB~~ 1/500 - 1/2000 IHC~~1:100~500 ICC~~N/A E~~ 1/10000
<b>Storage</b>	Maintain refrigerated at 2-8°C for up to 6 months. For long term storage store at -20°C in small aliquots to prevent freeze-thaw cycles.
<b>Precautions</b>	CD191 is for research use only and not for use in diagnostic or therapeutic procedures.

## Protein Information

---

<b>Name</b>	CCR1
<b>Synonyms</b>	CMKBR1, CMKR1, SCYAR1
<b>Function</b>	Chemokine receptor that plays a crucial role in regulating immune cell migration, inflammation, and immune responses (PubMed: <a href="#">14991608</a> ). Contributes to the inflammatory response by recruiting immune cells, such as monocytes, macrophages, T-cells, and dendritic cells, to sites of inflammation for the clearance of pathogens and the resolution of tissue damage. When activated by its ligands including CCL3, CCL5-9, CCL13-16 and CCL23, triggers a signaling cascade within immune cells, leading to their migration towards

the source of the chemokine (PubMed:[15905581](#), PubMed:[38417634](#)). For example, mediates neutrophil migration after activation by CCL3 leading to the sequential release of TNF and leukotriene B4 (By similarity). Also mediates monocyte migration upon CXCL4 binding (PubMed:[29930254](#)). Activation by CCL5 results in neuroinflammation through the ERK1/2 signaling pathway (By similarity).

## Cellular Location

Cell membrane; Multi-pass membrane protein

## Tissue Location

Widely expressed in different hematopoietic cells.

## References

1.Histol Histopathol. 2014 Sep;29(9):1153-60.2.Am J Clin Pathol. 2010 Mar;133(3):473-83.

## Images

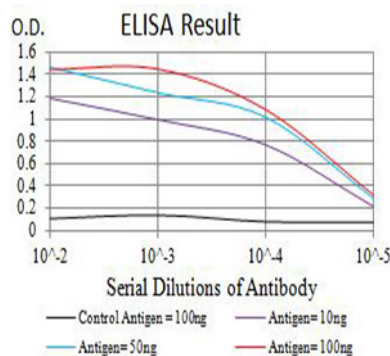


Figure 1:Black line: Control Antigen (100 ng);Purple line: Antigen (10ng); Blue line: Antigen (50 ng); Red line:Antigen (100 ng)

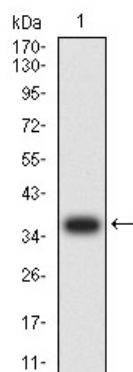


Figure 2:Western blot analysis using CD191 mAb against human CD191 (AA: extra mix) recombinant protein. (Expected MW is 37 kDa)

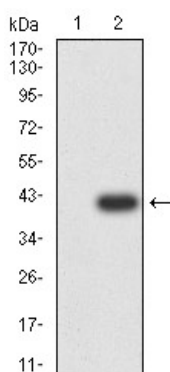
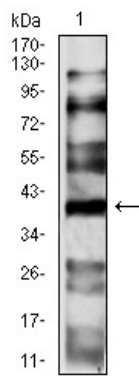


Figure 3:Western blot analysis using CD191 mAb against HEK293 (1) and CD191 (AA: extra mix)-hIgGfC transfected HEK293 (2) cell lysate.

Figure 4:Western blot analysis using CD191 mouse mAb



against HepG2 (1) cell lysate.

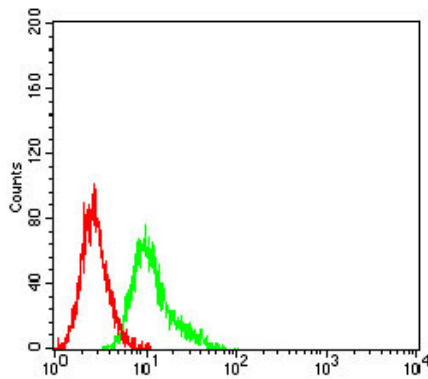


Figure 5:Flow cytometric analysis of Ramos cells using CD191 mouse mAb (green) and negative control (red).

Please note: All products are 'FOR RESEARCH USE ONLY. NOT FOR USE IN DIAGNOSTIC OR THERAPEUTIC PROCEDURES'.