

BTLA

Purified Mouse Monoclonal Antibody

Catalog # AO2697a

Product Information

Application	WB, IHC, ICC, E
Primary Accession	Q7Z6A9
Reactivity	Human
Host	Mouse
Clonality	Monoclonal
Clone Names	5G1G10
Isotype	Mouse IgG1
Calculated MW	32834
Immunogen	Purified recombinant fragment of human BTLA (AA: extra 31-157) expressed in HEK293 cells.
Formulation	Purified antibody in PBS with 0.05% sodium azide

Additional Information

Gene ID	151888
Other Names	BTLA1; CD272
Dilution	WB~~ 1/500 - 1/2000 IHC~~1:100~500 ICC~~N/A E~~ 1/10000
Storage	Maintain refrigerated at 2-8°C for up to 6 months. For long term storage store at -20°C in small aliquots to prevent freeze-thaw cycles.
Precautions	BTLA is for research use only and not for use in diagnostic or therapeutic procedures.

Protein Information

Name	BTLA {ECO:0000303 PubMed:12796776, ECO:0000312 HGNC:HGNC:21087}
Function	Inhibitory receptor on lymphocytes that negatively regulates antigen receptor signaling via PTPN6/SHP-1 and PTPN11/SHP-2 (PubMed: 12796776 , PubMed: 14652006 , PubMed: 15568026 , PubMed: 18193050). May interact in cis (on the same cell) or in trans (on other cells) with TNFRSF14 (PubMed: 19915044). In cis interactions, appears to play an immune regulatory role inhibiting in trans interactions in naive T cells to maintain a resting state. In trans interactions, can predominate during adaptive immune response to provide survival signals to effector T cells (PubMed: 19915044).

References

1.Blood. 2013 Aug 8;122(6):922-31. 2.Breast Cancer Res Treat. 2010 Feb;120(1):195-202.

Images

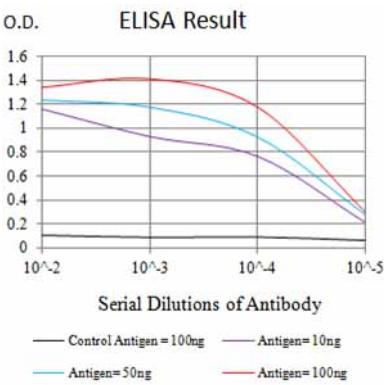


Figure 1:Black line: Control Antigen (100 ng);Purple line: Antigen (10ng); Blue line: Antigen (50 ng); Red line:Antigen (100 ng)

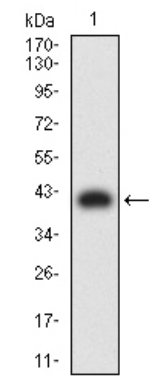


Figure 2:Western blot analysis using BTLA mAb against human BTLA (AA: extra 31-157) recombinant protein. (Expected MW is 41 kDa)

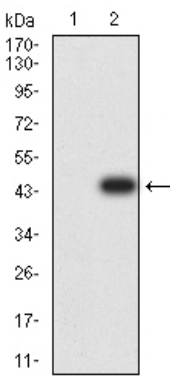
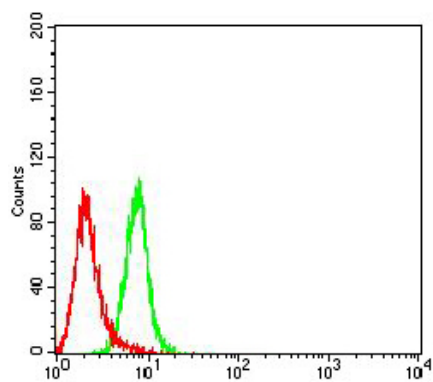


Figure 3:Western blot analysis using BTLA mAb against HEK293 (1) and BTLA (AA: extra 31-157)-hIgGfc transfected HEK293 (2) cell lysate.

Figure 4:Flow cytometric analysis of Hela cells using BTLA mouse mAb (green) and negative control (red).



Please note: All products are 'FOR RESEARCH USE ONLY. NOT FOR USE IN DIAGNOSTIC OR THERAPEUTIC PROCEDURES'.