

# P2RY14

Purified Mouse Monoclonal Antibody  
Catalog # AO2662a

## Product Information

---

<b>Application</b>	WB, IHC, ICC, E
<b>Primary Accession</b>	<a href="#">Q15391</a>
<b>Reactivity</b>	Human
<b>Host</b>	Mouse
<b>Clonality</b>	Monoclonal
<b>Clone Names</b>	5A3F1
<b>Isotype</b>	Mouse IgG2b
<b>Calculated MW</b>	38971 Da
<b>Immunogen</b>	Purified recombinant fragment of human P2RY14 (AA: extra mix) expressed in E. Coli.
<b>Formulation</b>	Purified antibody in PBS with 0.05% sodium azide

## Additional Information

---

<b>Other Names</b>	P2Y14; BPR105; GPR105
<b>Dilution</b>	WB~~ 1/500 - 1/2000 IHC~~ 1/200 - 1/1000 ICC~~ 1/200 - 1/1000 E~~ 1/10000
<b>Storage</b>	Maintain refrigerated at 2-8°C for up to 6 months. For long term storage store at -20°C in small aliquots to prevent freeze-thaw cycles.
<b>Precautions</b>	P2RY14 is for research use only and not for use in diagnostic or therapeutic procedures.

## Protein Information

---

## References

---

1.Mol Pharmacol. 2013 Jul;84(1):41-9.2.Bioorg Med Chem Lett. 2007 Feb 1;17(3):761-6.

## Images

---

Figure 1:Black line: Control Antigen (100 ng);Purple line: Antigen (10ng); Blue line: Antigen (50 ng); Red line:Antigen (100 ng)

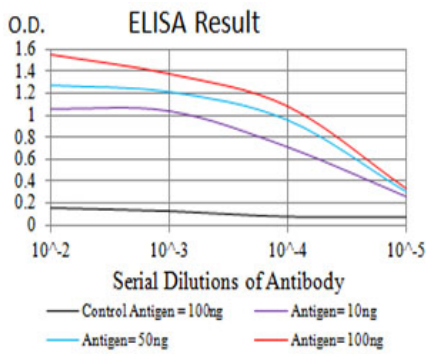


Figure 2:Western blot analysis using P2RY14 mAb against human P2RY14 (AA: extra mix) recombinant protein. (Expected MW is 11.5 kDa)

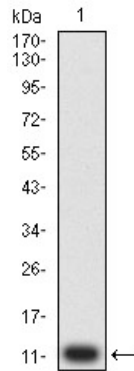


Figure 3:Western blot analysis using P2RY14 mAb against HEK293 (1) and P2RY14 (AA: extra mix)-hIgGfc transfected HEK293 (2) cell lysate.

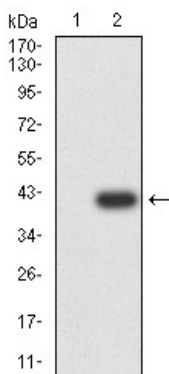


Figure 5:Flow cytometric analysis of Hela cells using P2RY14 mouse mAb (green) and negative control (red).

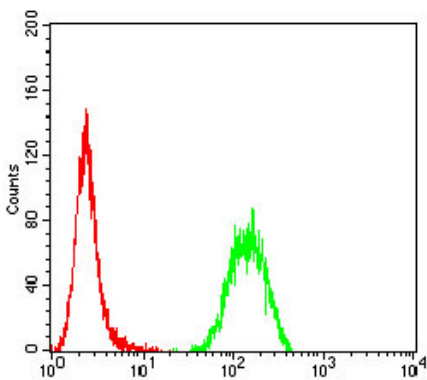


Figure 4:Immunofluorescence analysis of Hela cells using P2RY14 mouse mAb (green). Blue: DRAQ5 fluorescent DNA dye. Red: Actin filaments have been labeled with Alexa Fluor- 555 phalloidin. Secondary antibody from Fisher (Cat#: 35503)

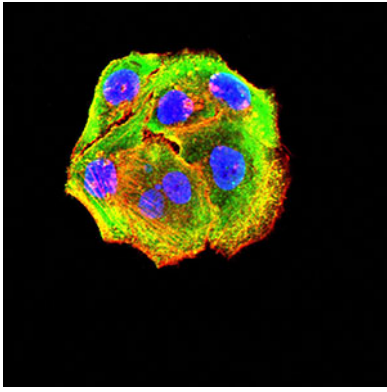


Figure 6: Immunohistochemical analysis of paraffin-embedded lung cancer tissues using P2RY14 mouse mAb with DAB staining.

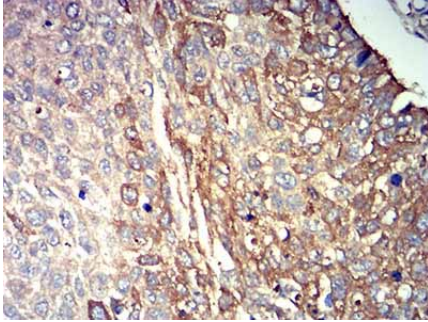
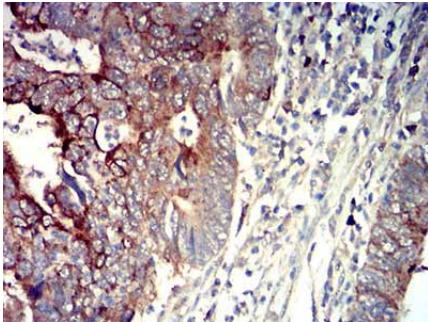


Figure 7: Immunohistochemical analysis of paraffin-embedded rectum cancer tissues using P2RY14 mouse mAb with DAB staining.



Please note: All products are 'FOR RESEARCH USE ONLY. NOT FOR USE IN DIAGNOSTIC OR THERAPEUTIC PROCEDURES'.