

# ELANE

Purified Mouse Monoclonal Antibody  
Catalog # AO2660a

## Product Information

---

<b>Application</b>	WB, IHC, ICC, E
<b>Primary Accession</b>	<a href="#">P08246</a>
<b>Reactivity</b>	Human, Monkey
<b>Host</b>	Mouse
<b>Clonality</b>	Monoclonal
<b>Clone Names</b>	6B6B10
<b>Isotype</b>	Mouse IgG1
<b>Calculated MW</b>	28518
<b>Immunogen</b>	Purified recombinant fragment of human ELANE (AA: 140-267) expressed in E. Coli.
<b>Formulation</b>	Purified antibody in PBS with 0.05% sodium azide

## Additional Information

---

<b>Gene ID</b>	1991
<b>Other Names</b>	GE; NE; HLE; HNE; ELA2; SCN1; PMN-E
<b>Dilution</b>	WB~~ 1/500 - 1/2000 IHC~~ 1/200 - 1/1000 ICC~~N/A E~~ 1/10000
<b>Storage</b>	Maintain refrigerated at 2-8°C for up to 6 months. For long term storage store at -20°C in small aliquots to prevent freeze-thaw cycles.
<b>Precautions</b>	ELANE is for research use only and not for use in diagnostic or therapeutic procedures.

## Protein Information

---

<b>Name</b>	ELANE
<b>Synonyms</b>	ELA2
<b>Function</b>	Serine protease that modifies the functions of natural killer cells, monocytes and granulocytes. Inhibits C5a-dependent neutrophil enzyme release and chemotaxis (PubMed: <a href="#">15140022</a> ). Promotes cleavage of GSDMB, thereby inhibiting pyroptosis (PubMed: <a href="#">36899106</a> ). Promotes blood coagulation (PubMed: <a href="#">20676107</a> ). Through the activation of the platelet fibrinogen receptor integrin alpha-IIb/beta-3, potentiates platelet aggregation induced by a threshold concentration of cathepsin G (CTSG) (PubMed: <a href="#">25211214</a> ,

PubMed:[9111081](#)). Cleaves and thus inactivates tissue factor pathway inhibitor (TFPI) (PubMed:[20676107](#), PubMed:[25211214](#)). Capable of killing E.coli but not S.aureus in vitro; digests outer membrane protein A (ompA) in E.coli and K.pneumoniae (PubMed:[10947984](#)).

**Cellular Location**

Cytoplasmic vesicle, phagosome. Note=Localized in phagolysosomes following ingestion of E.coli by neutrophils

**Tissue Location**

Bone marrow cells. Neutrophil (PubMed:10947984).

**References**

1.Pediatr Blood Cancer. 2015 Dec;62(12):2229-31.2.Hum Mutat. 2013 Jun;34(6):905-14.

**Images**

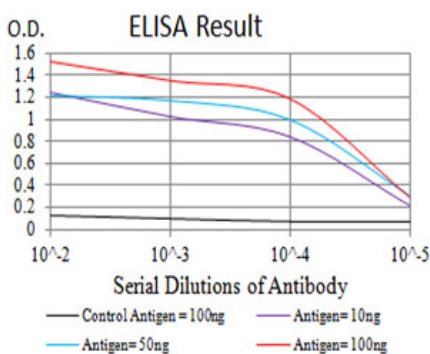


Figure 1:Black line: Control Antigen (100 ng);Purple line: Antigen (10ng); Blue line: Antigen (50 ng); Red line:Antigen (100 ng)

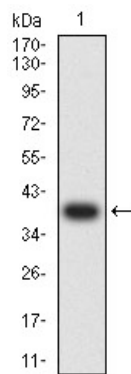


Figure 2:Western blot analysis using ELANE mAb against human ELANE (AA: 140-267) recombinant protein. (Expected MW is 39 kDa)

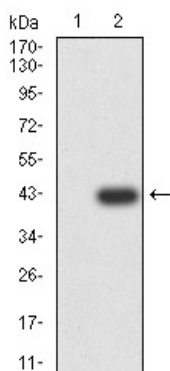


Figure 3:Western blot analysis using ELANE mAb against HEK293 (1) and ELANE (AA: 140-267)-hIgGfc transfected HEK293 (2) cell lysate.

Figure 4:Western blot analysis using ELANE mouse mAb against U937 (1), SPC-A-1 (2), and COS7 (3) cell lysate.

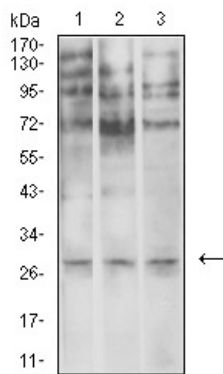


Figure 5: Flow cytometric analysis of HeLa cells using ELANE mouse mAb (green) and negative control (red).

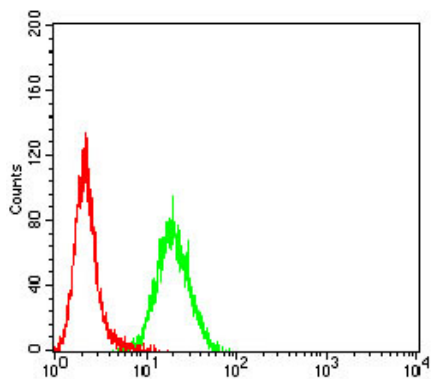
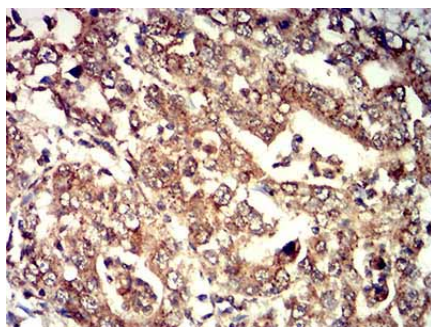


Figure 6: Immunohistochemical analysis of paraffin-embedded stomach cancer tissues using ELANE mouse mAb with DAB staining.



Please note: All products are 'FOR RESEARCH USE ONLY. NOT FOR USE IN DIAGNOSTIC OR THERAPEUTIC PROCEDURES'.