

GRM6

Purified Mouse Monoclonal Antibody
Catalog # AO2615a

Product Information

Application	WB, IHC, ICC, E
Primary Accession	O15303
Reactivity	Human
Host	Mouse
Clonality	Monoclonal
Clone Names	4C11E12
Isotype	Mouse IgG1
Calculated MW	95468
Immunogen	Purified recombinant fragment of human GRM6 (AA: extra 480-585) expressed in E. Coli.
Formulation	Purified antibody in PBS with 0.05% sodium azide

Additional Information

Gene ID	2916
Other Names	mGlu6; CSNB1B; GPRC1F; MGLUR6
Dilution	WB~~ 1/500 - 1/2000 IHC~~1:100~500 ICC~~N/A E~~ 1/10000
Storage	Maintain refrigerated at 2-8°C for up to 6 months. For long term storage store at -20°C in small aliquots to prevent freeze-thaw cycles.
Precautions	GRM6 is for research use only and not for use in diagnostic or therapeutic procedures.

Protein Information

Name	GRM6
Synonyms	GPRC1F, MGLUR6
Function	G-protein coupled receptor for glutamate. Ligand binding causes a conformation change that triggers signaling via guanine nucleotide-binding proteins (G proteins) and modulates the activity of down-stream effectors, such as adenylate cyclase. Signaling inhibits adenylate cyclase activity (By similarity). Signaling stimulates TRPM1 channel activity and Ca(2+) uptake. Required for normal vision.

Cellular Location

Cell membrane; Multi-pass membrane protein. Endoplasmic reticulum membrane; Multi-pass membrane protein. Golgi apparatus membrane; Multi-pass membrane protein. Cell projection, dendrite Note=Subject to trafficking from the endoplasmic reticulum to the Golgi apparatus and then to the cell membrane

Tissue Location

Detected in melanocytes.

References

1.Pigment Cell Melanoma Res. 2013 May;26(3):348-56.2.Mol Vis. 2009 Oct 19;15:2094-100.

Images

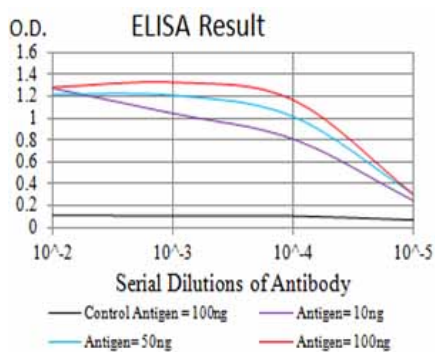


Figure 1:Black line: Control Antigen (100 ng);Purple line: Antigen (10ng); Blue line: Antigen (50 ng); Red line:Antigen (100 ng)

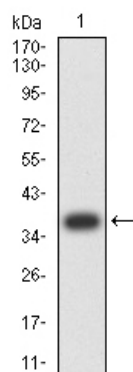


Figure 2:Western blot analysis using GRM6 mAb against human GRM6 (AA: extra 480-585) recombinant protein. (Expected MW is 37.5 kDa)

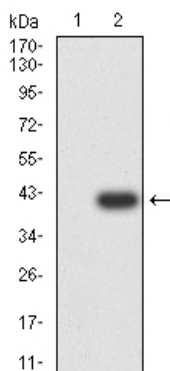


Figure 3:Western blot analysis using GRM6 mAb against HEK293 (1) and GRM6 (AA: extra 480-585)-hIgGfc transfected HEK293 (2) cell lysate.

Please note: All products are 'FOR RESEARCH USE ONLY. NOT FOR USE IN DIAGNOSTIC OR THERAPEUTIC PROCEDURES'.