

# GRM5

Purified Mouse Monoclonal Antibody  
Catalog # AO2588a

## Product Information

---

<b>Application</b>	WB, IHC, ICC, E
<b>Primary Accession</b>	<a href="#">P41594</a>
<b>Reactivity</b>	Human
<b>Host</b>	Mouse
<b>Clonality</b>	Monoclonal
<b>Clone Names</b>	1A11D10
<b>Isotype</b>	Mouse IgG1
<b>Calculated MW</b>	132469
<b>Immunogen</b>	Purified recombinant fragment of human GRM5 (AA: extra 458-580) expressed in E. Coli.
<b>Formulation</b>	Purified antibody in PBS with 0.05% sodium azide

## Additional Information

---

<b>Gene ID</b>	2915
<b>Other Names</b>	mGlu5; GPRC1E; MGLUR5; PPP1R86
<b>Dilution</b>	WB~~ 1/500 - 1/2000 IHC~~ 1/200 - 1/1000 ICC~~ 1/200 - 1/1000 E~~ 1/10000
<b>Storage</b>	Maintain refrigerated at 2-8°C for up to 6 months. For long term storage store at -20°C in small aliquots to prevent freeze-thaw cycles.
<b>Precautions</b>	GRM5 is for research use only and not for use in diagnostic or therapeutic procedures.

## Protein Information

---

<b>Name</b>	GRM5
<b>Synonyms</b>	GPRC1E, MGLUR5
<b>Function</b>	G-protein coupled receptor for glutamate. Ligand binding causes a conformation change that triggers signaling via guanine nucleotide-binding proteins (G proteins) and modulates the activity of down-stream effectors. Signaling activates a phosphatidylinositol- calcium second messenger system and generates a calcium-activated chloride current. Plays an important role in the regulation of synaptic plasticity and the modulation of the neural network activity.

## References

1.Curr Alzheimer Res. 2014;11(7):694-705.2.Int J Neuropsychopharmacol. 2014 Dec;17(12):1915-22.

## Images

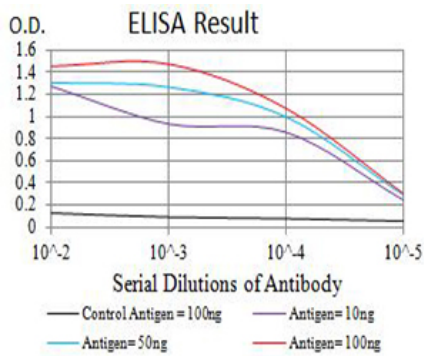


Figure 1:Black line: Control Antigen (100 ng);Purple line: Antigen (10ng); Blue line: Antigen (50 ng); Red line:Antigen (100 ng)

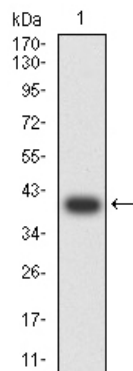


Figure 2:Western blot analysis using GRM5 mAb against human GRM5 (AA: extra 458-580) recombinant protein. (Expected MW is 40.1 kDa)

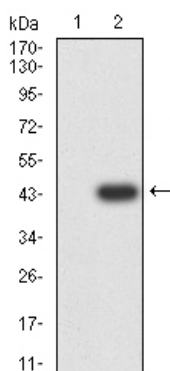


Figure 3:Western blot analysis using GRM5 mAb against HEK293 (1) and GRM5 (AA: extra 458-580)-hIgGfc transfected HEK293 (2) cell lysate.

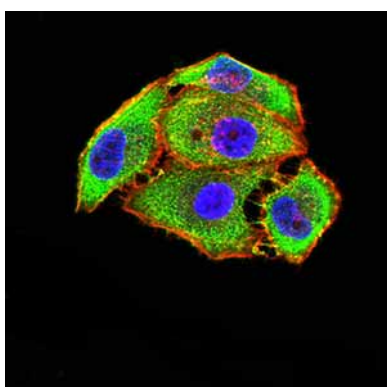


Figure 4:Immunofluorescence analysis of HeLa cells using GRM5 mouse mAb (green). Blue: DRAQ5 fluorescent DNA dye. Red: Actin filaments have been labeled with Alexa Fluor- 555 phalloidin. Secondary antibody from Fisher (Cat#: 35503)

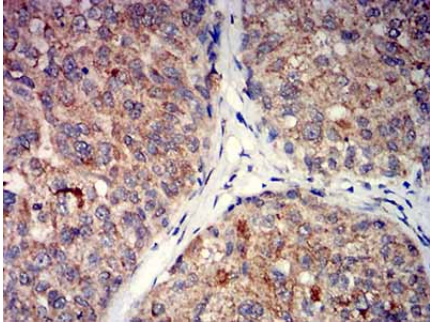
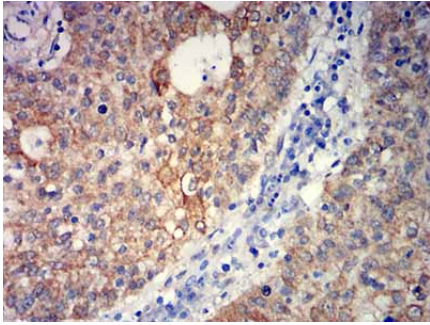


Figure 5: Immunohistochemical analysis of paraffin-embedded bladder cancer tissues using GRM5 mouse mAb with DAB staining.



1/200 - 1/1000

Please note: All products are 'FOR RESEARCH USE ONLY. NOT FOR USE IN DIAGNOSTIC OR THERAPEUTIC PROCEDURES'.