

HAVCR1

Purified Mouse Monoclonal Antibody
Catalog # AO2575a

Product Information

Application	WB, IHC, ICC, E
Primary Accession	Q96D42
Reactivity	Human, Mouse
Host	Mouse
Clonality	Monoclonal
Clone Names	3D9F5
Isotype	Mouse IgG1
Calculated MW	39250
Immunogen	Purified recombinant fragment of human HAVCR1 (AA: 70-290) expressed in E. Coli.
Formulation	Purified antibody in PBS with 0.05% sodium azide

Additional Information

Gene ID	26762
Other Names	TIM; KIM1; TIM1; CD365; HAVCR; KIM-1; TIM-1; TIMD1; TIMD-1; HAVCR-1
Dilution	WB~~ 1/500 - 1/2000 IHC~~1:100~500 ICC~~N/A E~~ 1/10000
Storage	Maintain refrigerated at 2-8°C for up to 6 months. For long term storage store at -20°C in small aliquots to prevent freeze-thaw cycles.
Precautions	HAVCR1 is for research use only and not for use in diagnostic or therapeutic procedures.

Protein Information

Name	HAVCR1
Synonyms	KIM1, TIM1, TIMD1
Function	Phosphatidylserine receptor that plays an important functional role in regulatory B-cell homeostasis including generation, expansion and suppressor functions (By similarity). As P- selectin/SELPLG ligand, plays a specialized role in activated but not naive T-cell trafficking during inflammatory responses (PubMed: 24703780). Controls thereby T-cell accumulation in the inflamed central nervous system (CNS) and the induction of autoimmune disease (PubMed: 24703780). Also regulates expression of

various anti-inflammatory cytokines and co-inhibitory ligands including IL10 (By similarity). Acts as a regulator of T-cell proliferation (By similarity). Confers phagocytic ability on injured kidney epithelial cells, allowing them to bind to and internalize apoptotic bodies and necrotic debris following kidney injury (PubMed:[18414680](#)). The ectodomain binds to the surface of apoptotic kidney epithelial cells via phosphatidylserine and oxidized phospholipids exposed on the cell membrane of the apoptotic cells (PubMed:[18414680](#)). HAVCR1-expressing cells are also capable of phagocytosing Gram-negative and Gram-positive bacteria (PubMed:[18414680](#)).

Cellular Location

Cell membrane; Single-pass type I membrane protein. Cell projection, phagocytic cup. Cytoplasmic vesicle, phagosome

Tissue Location

Widely expressed, with highest levels in kidney and testis. Expressed by activated CD4+ T-cells during the development of helper T-cells responses.

References

1.Biomed Res Int. 2015;2015:854070. 2.Pediatr Res. 2015 Oct;78(4):430-5.

Images

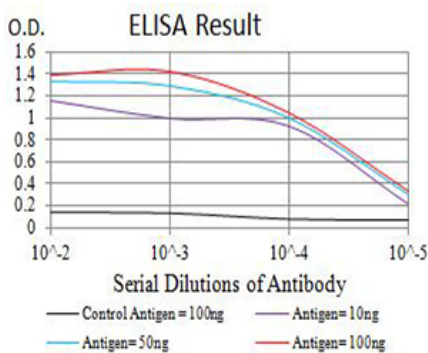


Figure 1:Black line: Control Antigen (100 ng);Purple line: Antigen (10ng); Blue line: Antigen (50 ng); Red line:Antigen (100 ng)

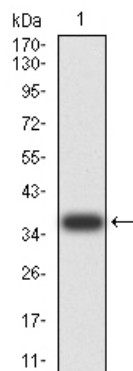


Figure 2:Western blot analysis using HAVCR1 mAb against human HAVCR1 (AA: 70-290) recombinant protein. (Expected MW is 37 kDa)

Figure 3:Western blot analysis using HAVCR1 mAb against HEK293 (1) and HAVCR1 (AA: 70-290)-hIgGfc transfected HEK293 (2) cell lysate.

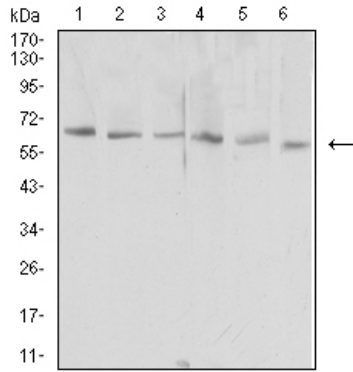
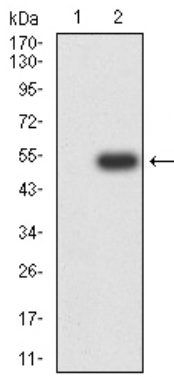


Figure 4: Western blot analysis using HAVCR1 mouse mAb against NIH/3T3 (1), HEK293 (2), Hela (3), Raw264.7 (4), Jurkat (5), and PC-2 (6) cell lysate.

Please note: All products are 'FOR RESEARCH USE ONLY. NOT FOR USE IN DIAGNOSTIC OR THERAPEUTIC PROCEDURES'.