

KDM4B

Purified Mouse Monoclonal Antibody
Catalog # AO2524a

Product Information

Application	WB, IHC, ICC, E
Primary Accession	O94953
Reactivity	Human, Mouse
Host	Mouse
Clonality	Monoclonal
Clone Names	3A6H6
Isotype	Mouse IgG1
Calculated MW	121897 Da
Immunogen	Purified recombinant fragment of human KDM4B (AA: 960-1096) expressed in E. Coli.
Formulation	Purified antibody in PBS with 0.05% sodium azide

Additional Information

Other Names	JMJD2B; TDRD14B
Dilution	WB~~ 1/500 - 1/2000 IHC~~1:100~500 ICC~~N/A E~~ 1/10000
Storage	Maintain refrigerated at 2-8°C for up to 6 months. For long term storage store at -20°C in small aliquots to prevent freeze-thaw cycles.
Precautions	KDM4B is for research use only and not for use in diagnostic or therapeutic procedures.

Protein Information

References

1.J Natl Cancer Inst. 2015 Apr 29;107(6):djv080.2.Int J Oncol. 2014 Apr;44(4):1341-8.

Images

Figure 1:Black line: Control Antigen (100 ng);Purple line: Antigen (10ng); Blue line: Antigen (50 ng); Red line:Antigen (100 ng)

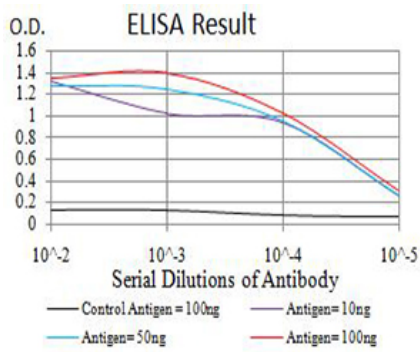


Figure 2: Western blot analysis using KDM4B mAb against human KDM4B (AA: 960-1096) recombinant protein. (Expected MW is 41 kDa)

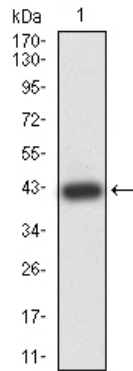


Figure 3: Western blot analysis using KDM4B mAb against HEK293 (1) and KDM4B (AA: 960-1096)-hIgGfc transfected HEK293 (2) cell lysate.

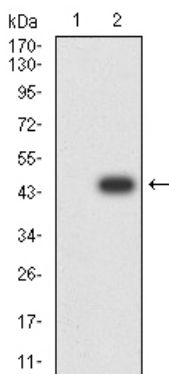
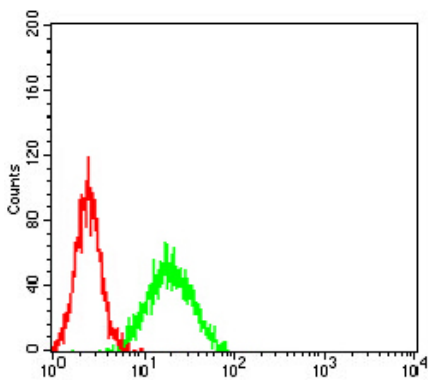


Figure 4: Flow cytometric analysis of NIH/3T3 cells using KDM4B mouse mAb (green) and negative control (red).



Please note: All products are 'FOR RESEARCH USE ONLY. NOT FOR USE IN DIAGNOSTIC OR THERAPEUTIC PROCEDURES'.