

Mouse Monoclonal Antibody to MOB1A

Purified Mouse Monoclonal Antibody

Catalog # AO2342a

Product Information

Application	WB, FC, E
Primary Accession	Q9H8S9
Reactivity	Human
Host	Mouse
Clonality	Monoclonal
Clone Names	3E7B2
Isotype	Mouse IgG1
Calculated MW	25080
Description	The protein encoded by this gene is a component of the Hippo signaling pathway, which controls organ size and tumor growth by enhancing apoptosis. Loss of the encoded protein results in cell proliferation and cancer formation. The encoded protein is also involved in the control of microtubule stability during cytokinesis. Several transcript variants encoding different isoforms have been found for this gene.;
Immunogen	Purified recombinant fragment of human MOB1A (AA:1-216) expressed in E. Coli.
Formulation	Purified antibody in PBS with 0.05% sodium azide
Application Note	ELISA: 1/10000; WB: 1/500 - 1/2000; FCM: 1/200 - 1/400

Additional Information

Gene ID	55233
Other Names	MOB1; MATS1; Mob4B; C2orf6; MOBK1B; MOBKL1B
Dilution	WB~~1:1000 FC~~1:10~50 E~~N/A
Storage	Maintain refrigerated at 2-8°C for up to 6 months. For long term storage store at -20°C in small aliquots to prevent freeze-thaw cycles.
Precautions	Mouse Monoclonal Antibody to MOB1A is for research use only and not for use in diagnostic or therapeutic procedures.

Protein Information

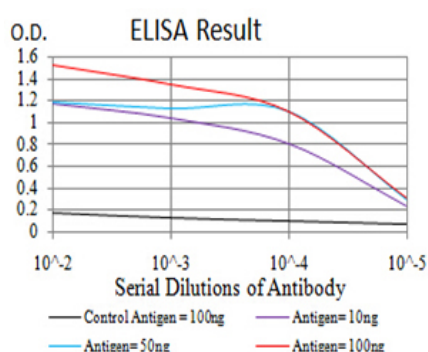
Name	MOB1A (HGNC:16015)
-------------	--------------------------------------

Function	Activator of LATS1/2 in the Hippo signaling pathway which plays a pivotal role in organ size control and tumor suppression by restricting proliferation and promoting apoptosis. The core of this pathway is composed of a kinase cascade wherein STK3/MST2 and STK4/MST1, in complex with its regulatory protein SAV1, phosphorylates and activates LATS1/2 in complex with its regulatory protein MOB1, which in turn phosphorylates and inactivates YAP1 oncoprotein and WWTR1/TAZ. Phosphorylation of YAP1 by LATS1/2 inhibits its translocation into the nucleus to regulate cellular genes important for cell proliferation, cell death, and cell migration. Stimulates the kinase activity of STK38 and STK38L. Acts cooperatively with STK3/MST2 to activate STK38.
Tissue Location	Adrenal gland, bone marrow, brain, placenta, prostate, salivary gland, skeletal muscle, testis, thymus, thyroid gland, heart, spinal cord, fetal brain and fetal liver

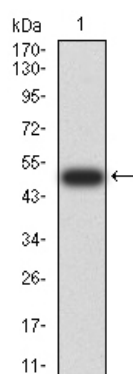
References

1.Biochem Genet. 2015 Oct;53(9-10):268-79. ; 2.Int J Oncol. 2007 Aug;31(2):333-8.;

Images

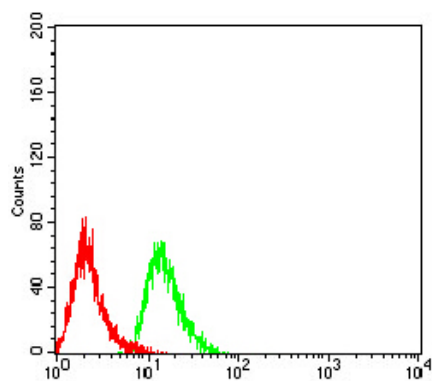
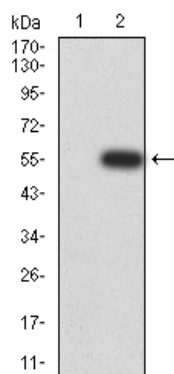


Black line: Control Antigen (100 ng);Purple line: Antigen (10ng); Blue line: Antigen (50 ng); Red line:Antigen (100 ng)



Western blot analysis using MOB1A mAb against human MOB1A (AA: 1-216) recombinant protein. (Expected MW is 51 kDa)

Western blot analysis using MOB1A mAb against HEK293 (1) and MOB1A (AA: 1-216)-hIgGFc transfected HEK293 (2) cell lysate.



Flow cytometric analysis of HeLa cells using MOB1A mouse mAb (green) and negative control (red).

Please note: All products are 'FOR RESEARCH USE ONLY. NOT FOR USE IN DIAGNOSTIC OR THERAPEUTIC PROCEDURES'.