

# CHGA Antibody

Purified Mouse Monoclonal Antibody

Catalog # AO2257a

## Product Information

---

<b>Application</b>	WB, E
<b>Primary Accession</b>	<a href="#">P10645</a>
<b>Reactivity</b>	Human, Mouse
<b>Host</b>	Mouse
<b>Clonality</b>	Monoclonal
<b>Clone Names</b>	1A6B6
<b>Isotype</b>	IgG1
<b>Calculated MW</b>	50688
<b>Description</b>	The protein encoded by this gene is a member of the chromogranin/secretogranin family of neuroendocrine secretory proteins. It is found in secretory vesicles of neurons and endocrine cells. This gene product is a precursor to three biologically active peptides; vasostatin, pancreastatin, and parastatin. These peptides act as autocrine or paracrine negative modulators of the neuroendocrine system. Other peptides, including chromostatin, beta-granin, WE-14 and GE-25, are also derived from the full-length protein. However, biological activities for these molecules have not been shown.
<b>Immunogen</b>	Purified recombinant fragment of human CHGA (AA: 87-252 ) expressed in E. Coli.
<b>Formulation</b>	Purified antibody in PBS with 0.05% sodium azide

## Additional Information

---

<b>Gene ID</b>	1113
<b>Other Names</b>	Chromogranin-A, CgA, Pituitary secretory protein I, SP-I, Vasostatin-1, Vasostatin I, Vasostatin-2, Vasostatin II, EA-92, ES-43, Pancreastatin, SS-18, WA-8, WE-14, LF-19, AL-11, GV-19, GR-44, ER-37, CHGA
<b>Dilution</b>	WB~~1/500 - 1/2000 E~~1/10000
<b>Storage</b>	Maintain refrigerated at 2-8°C for up to 6 months. For long term storage store at -20°C in small aliquots to prevent freeze-thaw cycles.
<b>Precautions</b>	CHGA Antibody is for research use only and not for use in diagnostic or therapeutic procedures.

## Protein Information

---

<b>Name</b>	CHGA
<b>Function</b>	[Pancreastatin]: Strongly inhibits glucose induced insulin release from the pancreas. [Serpinin]: Regulates granule biogenesis in endocrine cells by up-regulating the transcription of protease nexin 1 (SERPINE2) via a cAMP-PKA-SP1 pathway. This leads to inhibition of granule protein degradation in the Golgi complex which in turn promotes granule formation.
<b>Cellular Location</b>	[Serpinin]: Secreted {ECO:0000250 UniProtKB:P26339}. Cytoplasmic vesicle, secretory vesicle {ECO:0000250 UniProtKB:P26339}. Note=Pyroglutaminated serpinin localizes to secretory vesicle. {ECO:0000250 UniProtKB:P26339}
<b>Tissue Location</b>	Detected in cerebrospinal fluid (at protein level) (PubMed:25326458). Detected in urine (at protein level) (PubMed:37453717).

## References

1.Cell Signal. 2012 Jan;24(1):233-46. 2.J Endocrinol Invest. 2010 Mar;33(3):186-91.

## Images

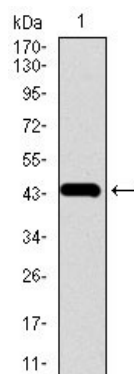


Figure 1: Western blot analysis using CHGA mAb against human CHGA recombinant protein. (Expected MW is 43.6 kDa)

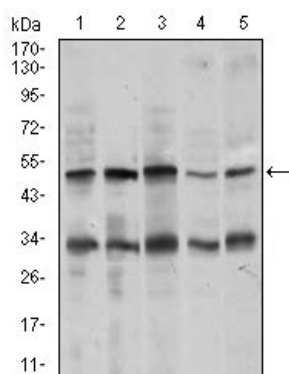


Figure 2: Western blot analysis using CHGA mouse mAb against MOLT4 (1), SK-N-SH (2), HepG2 (3), PC-12 (4), and C6 (5) cell lysate.

Please note: All products are 'FOR RESEARCH USE ONLY. NOT FOR USE IN DIAGNOSTIC OR THERAPEUTIC PROCEDURES'.