

# CD68 Antibody

Purified Mouse Monoclonal Antibody  
Catalog # AO1917a

## Product Information

---

<b>Application</b>	WB, FC, E
<b>Primary Accession</b>	<a href="#">P34810</a>
<b>Reactivity</b>	Human
<b>Host</b>	Mouse
<b>Clonality</b>	Monoclonal
<b>Clone Names</b>	3F7C6
<b>Isotype</b>	IgG1
<b>Calculated MW</b>	37408 Da
<b>Description</b>	This gene encodes a 110-kD transmembrane glycoprotein that is highly expressed by human monocytes and tissue macrophages. It is a member of the lysosomal/endosomal-associated membrane glycoprotein (LAMP) family. The protein primarily localizes to lysosomes and endosomes with a smaller fraction circulating to the cell surface. It is a type I integral membrane protein with a heavily glycosylated extracellular domain and binds to tissue- and organ-specific lectins or selectins. The protein is also a member of the scavenger receptor family. Scavenger receptors typically function to clear cellular debris, promote phagocytosis, and mediate the recruitment and activation of macrophages. Alternative splicing results in multiple transcripts encoding different isoforms.
<b>Immunogen</b>	Purified recombinant fragment of human CD68 (AA: 42-155) expressed in E. Coli.
<b>Formulation</b>	Purified antibody in PBS with 0.05% sodium azide.

## Additional Information

---

<b>Other Names</b>	Macrosialin, Gp110, CD68, CD68
<b>Dilution</b>	WB~~1/500 - 1/2000 FC~~1/200 - 1/400 E~~1/10000
<b>Storage</b>	Maintain refrigerated at 2-8°C for up to 6 months. For long term storage store at -20°C in small aliquots to prevent freeze-thaw cycles.
<b>Precautions</b>	CD68 Antibody is for research use only and not for use in diagnostic or therapeutic procedures.

## Protein Information

---

## Background

This gene encodes a member of the intermediate filament protein family and is expressed primarily in nerve cells. ; ;

## References

1. Rom J Morphol Embryol. 2012;53(1):61-6. 2. Anticancer Res. 2009 Aug;29(8):3269-79.

## Images

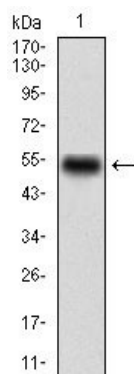


Figure 1: Western blot analysis using CD68 mAb against human CD68 (AA: 42-155) recombinant protein. (Expected MW is 37.4 kDa)

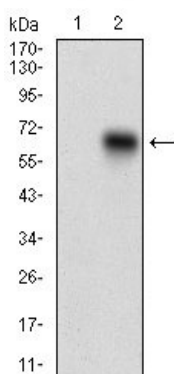


Figure 2: Western blot analysis using CD68 mAb against HEK293 (1) and CD68 (AA: 42-155)-hIgGfc transfected HEK293 (2) cell lysate.

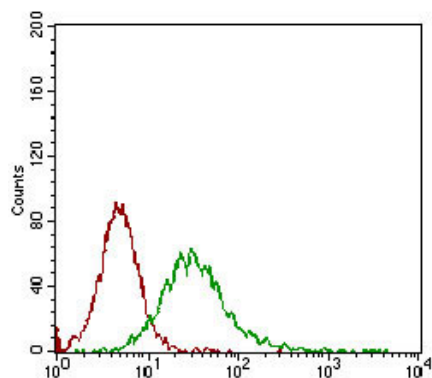


Figure 3: Flow cytometric analysis of Jurkat cells using CD68 mouse mAb (green) and negative control (red).

Please note: All products are 'FOR RESEARCH USE ONLY. NOT FOR USE IN DIAGNOSTIC OR THERAPEUTIC PROCEDURES'.