

# IGFBP7 Antibody

Purified Mouse Monoclonal Antibody

Catalog # AO1866a

## Product Information

---

<b>Application</b>	WB, E
<b>Primary Accession</b>	<a href="#">Q16270</a>
<b>Reactivity</b>	Human
<b>Host</b>	Mouse
<b>Clonality</b>	Monoclonal
<b>Clone Names</b>	5A4A9
<b>Isotype</b>	IgG1
<b>Calculated MW</b>	29130
<b>Description</b>	This gene encodes a member of the insulin-like growth factor (IGF)-binding protein (IGFBP) family. IGFBPs bind IGFs with high affinity, and regulate IGF availability in body fluids and tissues and modulate IGF binding to its receptors. This protein binds IGF-I and IGF-II with relatively low affinity, and belongs to a subfamily of low-affinity IGFBPs. It also stimulates prostacyclin production and cell adhesion. Alternatively spliced transcript variants encoding different isoforms have been described for this gene, and one variant has been associated with retinal arterial macroaneurysm (PMID:21835307).
<b>Immunogen</b>	Purified recombinant fragment of human IGFBP7 (AA: 52-156) expressed in E. Coli.
<b>Formulation</b>	Purified antibody in PBS with 0.05% sodium azide

## Additional Information

---

<b>Gene ID</b>	3490
<b>Other Names</b>	Insulin-like growth factor-binding protein 7, IBP-7, IGF-binding protein 7, IGFBP-7, IGFBP-rP1, MAC25 protein, PGI2-stimulating factor, Prostacyclin-stimulating factor, Tumor-derived adhesion factor, TAF, IGFBP7, MAC25, PSF
<b>Dilution</b>	WB~~1/500 - 1/2000 E~~1/10000
<b>Storage</b>	Maintain refrigerated at 2-8°C for up to 6 months. For long term storage store at -20°C in small aliquots to prevent freeze-thaw cycles.
<b>Precautions</b>	IGFBP7 Antibody is for research use only and not for use in diagnostic or therapeutic procedures.

## Protein Information

<b>Name</b>	IGFBP7
<b>Synonyms</b>	MAC25, PSF
<b>Function</b>	Binds IGF1 and IGF2 with a relatively low affinity. Stimulates prostacyclin (PGI2) production. Stimulates cell adhesion. Acts as a ligand for CD93 to play a role in angiogenesis (PubMed: <a href="#">38218180</a> ).
<b>Cellular Location</b>	Secreted.

## Background

This gene encodes a member of the insulin-like growth factor (IGF)-binding protein (IGFBP) family. IGFBPs bind IGFs with high affinity, and regulate IGF availability in body fluids and tissues and modulate IGF binding to its receptors. This protein binds IGF-I and IGF-II with relatively low affinity, and belongs to a subfamily of low-affinity IGFBPs. It also stimulates prostacyclin production and cell adhesion. Alternatively spliced transcript variants encoding different isoforms have been described for this gene, and one variant has been associated with retinal arterial macroaneurysm (PMID:21835307). ;

## References

1. Sci Signal. 2012 Dec 18;5(255):ra92. 2. Cancer Biol Ther. 2012 Feb 1;13(3):148-55.

## Images

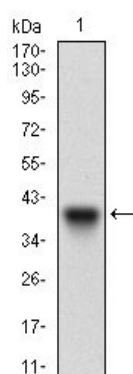


Figure 1: Western blot analysis using IGFBP7 mAb against human IGFBP7 recombinant protein. (Expected MW is 36 kDa)

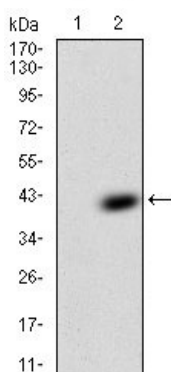


Figure 2: Western blot analysis using IGFBP7 mAb against HEK293 (1) and IGFBP7 (AA: 52-156)-hIgGFc transfected HEK293 (2) cell lysate.

Please note: All products are 'FOR RESEARCH USE ONLY. NOT FOR USE IN DIAGNOSTIC OR THERAPEUTIC PROCEDURES'.