

CCND1 Antibody

Purified Mouse Monoclonal Antibody
Catalog # AO1412a

Product Information

Application	WB, E
Primary Accession	P24385
Reactivity	Human
Host	Mouse
Clonality	Monoclonal
Clone Names	3D8
Isotype	IgG1
Calculated MW	33729 Da
Description	During each cell cycle cyclins undergo periodic accumulation and destruction. As key regulators of the cell cycle the cyclins control important transitions by acting as regulatory subunits of the Cdks. Early in the G1 phase of the cell cycle, cyclin D1 induction is followed by cyclin E induction. This sequential progression is marked early on in G1 by the activation of Cdk4 and in mid to late G1 by the activation of Cdk2 and the hyperphosphorylation of pRB. The final transition into S phase is thought to be dependent on the increased expression and association of cyclin E and Cdk2. In a recent study, Cyclin D1 regulates cellular metabolism, fat cell differentiation and cellular migration. Cyclin D1 is also involved in development and cancer. Cyclin D1 has also been linked to the development and progression of several cancers including breast, bladder, esophagus, and lung.
Immunogen	Purified recombinant fragment of human CCND1 expressed in E. Coli.
Formulation	Ascitic fluid containing 0.03% sodium azide.

Additional Information

Other Names	G1/S-specific cyclin-D1, B-cell lymphoma 1 protein, BCL-1, BCL-1 oncogene, PRAD1 oncogene, CCND1, BCL1, PRAD1
Dilution	WB~~1/500 - 1/2000 E~~N/A
Storage	Maintain refrigerated at 2-8°C for up to 6 months. For long term storage store at -20°C in small aliquots to prevent freeze-thaw cycles.
Precautions	CCND1 Antibody is for research use only and not for use in diagnostic or therapeutic procedures.

Protein Information

References

1. J Orthop Sci. 2009 Sep;14(5):623-30. 2. Mod Pathol. 2010 Feb;23(2):225-34.

Images

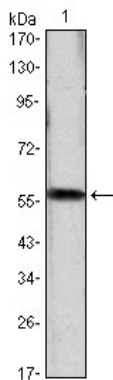


Figure 1: Western blot analysis using CCND1 mAb against CCND1(AA: 1-295)-hIgGfc transfected HEK293 cell lysate.

Please note: All products are 'FOR RESEARCH USE ONLY. NOT FOR USE IN DIAGNOSTIC OR THERAPEUTIC PROCEDURES'.