

MESP1 Antibody

Purified Mouse Monoclonal Antibody

Catalog # AO1407a

Product Information

Application	WB, E
Primary Accession	Q9BRJ9
Reactivity	Human
Host	Mouse
Clonality	Monoclonal
Clone Names	1A3
Isotype	IgG1
Calculated MW	28501
Description	Mesp1 (mesoderm posterior 1) is a basic helix-loop-helix-type transcription factor, which along with its related proteins, has an essential role in both segmentation and rostro-caudal patterning of somites in the anterior pre-somitic mesoderm. Mesp1 is expressed in many of the precursors of the cardiovascular system and is known to play a role in the process of cardiac morphogenesis.
Immunogen	Purified recombinant fragment of human MESP1 expressed in E. Coli.
Formulation	Ascitic fluid containing 0.03% sodium azide.

Additional Information

Gene ID	55897
Other Names	Mesoderm posterior protein 1, Class C basic helix-loop-helix protein 5, bHLHc5, MESP1, BHLHC5
Dilution	WB~~1/500 - 1/2000 E~~N/A
Storage	Maintain refrigerated at 2-8°C for up to 6 months. For long term storage store at -20°C in small aliquots to prevent freeze-thaw cycles.
Precautions	MESP1 Antibody is for research use only and not for use in diagnostic or therapeutic procedures.

Protein Information

Name	MESP1
-------------	-------

Synonyms	BHLHC5
Function	Transcription factor. Plays a role in the epithelialization of somitic mesoderm and in the development of cardiac mesoderm. Defines the rostrocaudal patterning of the somites by participating in distinct Notch pathways (By similarity).
Cellular Location	Nucleus.

References

1. Proc Natl Acad Sci U S A. 2007 Mar 6;104(10):3859-64. 2. Cell Stem Cell. 2008 Jul 3;3(1):69-84. 3. Circulation. 2008 Jul 29;118(5):507-17.

Images

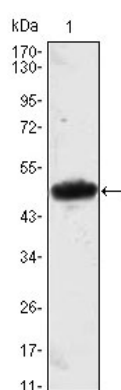


Figure 1: Western blot analysis using MESP1 mAb against MESP1(AA: 1-200)-hIgGFc transfected HEK293 cell lysate.

Please note: All products are 'FOR RESEARCH USE ONLY. NOT FOR USE IN DIAGNOSTIC OR THERAPEUTIC PROCEDURES'.