

LCN1 Antibody

Purified Mouse Monoclonal Antibody

Catalog # AO1270a

Product Information

Application	WB, IHC, ICC, E
Primary Accession	P31025
Reactivity	Human
Host	Mouse
Clonality	Monoclonal
Clone Names	10B10
Isotype	IgG1
Calculated MW	19250
Description	LCN1: lipocalin 1 (tear prealbumin), also known as TP, PMFA, VEGP. Entrez Protein: NP_002288. The protein belongs to the lipocalin family. Lipocalins are a group of extracellular proteins that are able to bind lipophiles by enclosure within their structures to minimize solvent contact. This protein may bind hydrophobic ligands and inhibit cysteine proteinases. It may also play a role in taste reception and could be necessary for the concentration and delivery of sapid molecules in the gustatory system.
Immunogen	Purified recombinant fragment of LCN1 expressed in E. Coli.
Formulation	Ascitic fluid containing 0.03% sodium azide.

Additional Information

Gene ID	3933
Other Names	Lipocalin-1, Tear lipocalin, Tlc, Tear prealbumin, TP, Von Ebner gland protein, VEG protein, LCN1, VEGP
Dilution	WB~~1/500 - 1/2000 IHC~~1/200 - 1/1000 ICC~~N/A E~~N/A
Storage	Maintain refrigerated at 2-8°C for up to 6 months. For long term storage store at -20°C in small aliquots to prevent freeze-thaw cycles.
Precautions	LCN1 Antibody is for research use only and not for use in diagnostic or therapeutic procedures.

Protein Information

Name	LCN1
-------------	------

Synonyms	VEGP
Function	Could play a role in taste reception. Could be necessary for the concentration and delivery of sapid molecules in the gustatory system. Can bind various ligands, with chemical structures ranging from lipids and retinoids to the macrocyclic antibiotic rifampicin and even to microbial siderophores. Exhibits an extremely wide ligand pocket.
Cellular Location	Secreted.
Tissue Location	Mainly expressed in lachrymal and salivary glands. Also expressed in the prostate

References

1. Adv Exp Med Biol. 2002;506(Pt A):555-65. 2. J Autoimmun. 2005 Nov;25(3):229-34.

Images

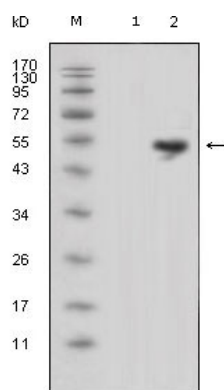


Figure 1: Western blot analysis using LCN1 mouse mAb against HEK293 (1) and LCN1-hIgGFc transfected HEK293 cell lysate (2).

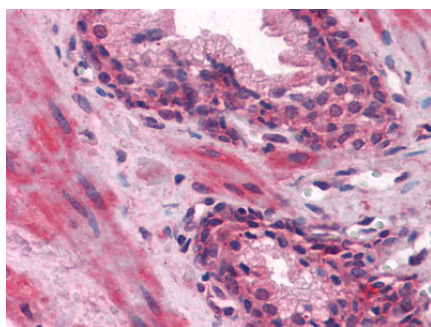


Figure 2: Immunohistochemical analysis of paraffin-embedded human Prostate tissues using LCN1 mouse mAb

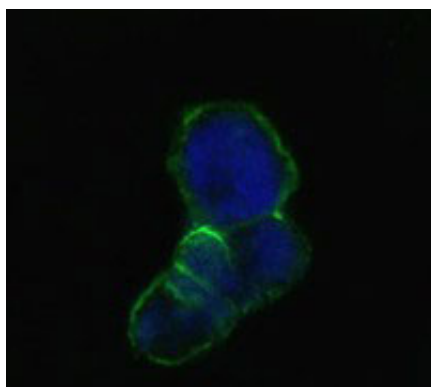


Figure 3: Confocal immunofluorescence analysis of methanol-fixed HEK293 cells transfected with LCN1-hIgGFc using LCN1 mouse mAb(green), showing membrane localization. Blue: DRAQ5 fluorescent DNA dye.

Please note: All products are 'FOR RESEARCH USE ONLY. NOT FOR USE IN DIAGNOSTIC OR THERAPEUTIC PROCEDURES'.