

# Mammaglobin-1 Antibody

Purified Mouse Monoclonal Antibody  
Catalog # AO1248a

## Product Information

---

<b>Application</b>	WB, E
<b>Primary Accession</b>	<a href="#">Q13296</a>
<b>Reactivity</b>	Human
<b>Host</b>	Mouse
<b>Clonality</b>	Monoclonal
<b>Clone Names</b>	1G8D6; 2E7G9
<b>Isotype</b>	IgG1
<b>Calculated MW</b>	10499
<b>Description</b>	Mammaglobin is a gene that is expressed almost exclusively in the normal breast epithelium and human breast cancer. It is a member of the secretoglobulin gene family and forms a heterodimer with lipophilin B. It has been suggested that mammaglobin may be a useful marker for breast cancer clinical research. Studies investigating the detection of mRNA by RT PCR from circulating carcinoma cells in the peripheral blood of breast cancer patients have shown that mammaglobin is a highly specific marker and correlates with several prognostic factors, such as lymph node involvement.
<b>Immunogen</b>	Purified recombinant fragment of Mammaglobin-1 expressed in E. Coli.
<b>Formulation</b>	Ascitic fluid containing 0.03% sodium azide.

## Additional Information

---

<b>Gene ID</b>	4250
<b>Other Names</b>	Mammaglobin-A, Mammaglobin-1, Secretoglobulin family 2A member 2, SCGB2A2, MGB1, UGB2
<b>Dilution</b>	WB~~1/500 - 1/2000 E~~N/A
<b>Storage</b>	Maintain refrigerated at 2-8°C for up to 6 months. For long term storage store at -20°C in small aliquots to prevent freeze-thaw cycles.
<b>Precautions</b>	Mammaglobin-1 Antibody is for research use only and not for use in diagnostic or therapeutic procedures.

## Protein Information

---

<b>Name</b>	SCGB2A2
-------------	---------

<b>Synonyms</b>	MGB1, UGB2
<b>Cellular Location</b>	Secreted.
<b>Tissue Location</b>	Mammary gland specific. Over-expressed in breast cancer

## References

---

1. Am J Clin Pathol. 2004 May;121(5):637-43. 2. Eur J Surg Oncol. 2007 Feb;33(1):16-22.

## Images

---

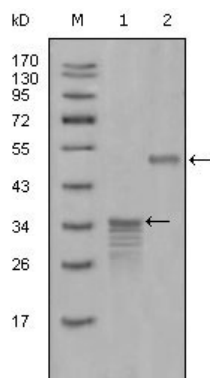


Figure 1: Western blot analysis using Mammaglobin-1 mouse mAb against full-length GST- Mammaglobin-1 (1) and full-length MBP- Mammaglobin-1 (aa1-193) recombinant protein (2).

Please note: All products are 'FOR RESEARCH USE ONLY. NOT FOR USE IN DIAGNOSTIC OR THERAPEUTIC PROCEDURES'.