

YES1 Antibody

Purified Mouse Monoclonal Antibody
Catalog # AO1155a

Product Information

Application	WB, E
Primary Accession	P07947
Reactivity	Human
Host	Mouse
Clonality	Monoclonal
Clone Names	2F3E6
Isotype	IgG1
Calculated MW	60801 Da
Description	YES1, v-yes-1 Yamaguchi sarcoma viral oncogene homolog 1. This gene is the cellular homolog of the Yamaguchi sarcoma virus oncogene. The encoded protein has tyrosine kinase activity and belongs to the src family of proteins. This gene lies in close proximity to thymidylate synthase gene on chromosome 18, and a corresponding pseudogene has been found on chromosome 22.
Immunogen	Purified recombinant fragment of YES (aa10-193) expressed in E. Coli.
Formulation	Ascitic fluid containing 0.03% sodium azide.

Additional Information

Other Names	Tyrosine-protein kinase Yes, 2.7.10.2, Proto-oncogene c-Yes, p61-Yes, YES1, YES
Dilution	WB~~1/500 - 1/2000 E~~N/A
Storage	Maintain refrigerated at 2-8°C for up to 6 months. For long term storage store at -20°C in small aliquots to prevent freeze-thaw cycles.
Precautions	YES1 Antibody is for research use only and not for use in diagnostic or therapeutic procedures.

Protein Information

References

1. J Biol Chem. 2004 Jun 4;279(23):23977-87. 2. J Biol Chem. 2004 Jul 23;279(30):31590-8. 3. Nat Biotechnol. 2005 Jan;23(1):94-101.

Images

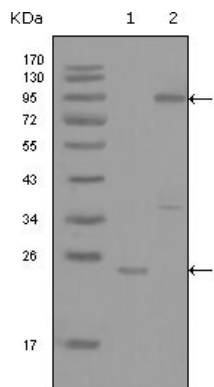


Figure 1: Western blot analysis using YES1 mouse mAb against truncated YES1-His recombinant protein (1) and full-length GFP-YES1(aa1-543) transfected COS7 cell lysate (2).

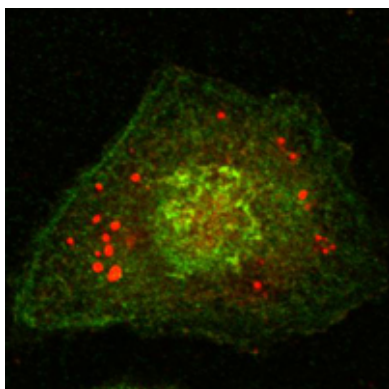


Figure 2: Confocal immunofluorescence analysis of HeLa cells using Calnexin mouse mAb (green).

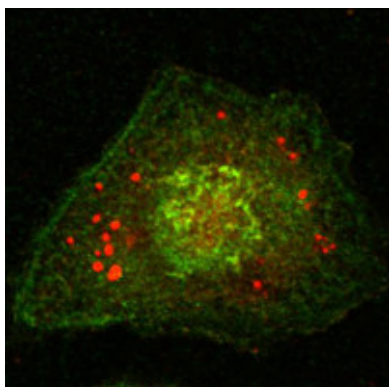


Figure 2: Confocal immunofluorescence analysis of HeLa cells using anti-Calnexin mAb (green).

Please note: All products are 'FOR RESEARCH USE ONLY. NOT FOR USE IN DIAGNOSTIC OR THERAPEUTIC PROCEDURES'.