

SNCG (breast cancer-specific protein 1) Antibody

Purified Mouse Monoclonal Antibody

Catalog # AO1065a

Product Information

Application	WB, IHC, E
Primary Accession	O76070
Reactivity	Human
Host	Mouse
Clonality	Monoclonal
Clone Names	1H10D2
Isotype	IgG1
Calculated MW	13331
Description	SNCG(also designated gamma-synuclein or breast cancer-specific protein 1),with 127-amino acid protein(about 14kDa), belongs to the synuclein family, which also includes alpha- and beta- synuclein.Three synucleins are located in the neuronal cytosol and enriched in presynaptic terminals,while SNCG is also expressed in many other non-neuronal tissues. SNCG is abnormally expressed in a high percentage of tumor tissues of diversified cancer types, including liver, esophagus, colon, gastric, lung, prostate, cervical, and breast cancer, but rarely expressed in tumor-matched nonneoplastic adjacent tissues. High levels of SNCG have been identified in advanced breast carcinomas suggesting a correlation between overexpression of SNCG and breast tumor development.
Immunogen	Purified recombinant fragment of SNCG expressed in E. Coli.
Formulation	Purified antibody in PBS containing 0.03% sodium azide.

Additional Information

Gene ID	6623
Other Names	Gamma-synuclein, Breast cancer-specific gene 1 protein, Persyn, Synoretin, SR, SNCG, BCSG1, PERSYN, PRSN
Dilution	WB~~1/500 - 1/2000 IHC~~1/200 - 1/1000 E~~N/A
Storage	Maintain refrigerated at 2-8°C for up to 6 months. For long term storage store at -20°C in small aliquots to prevent freeze-thaw cycles.
Precautions	SNCG (breast cancer-specific protein 1) Antibody is for research use only and not for use in diagnostic or therapeutic procedures.

Protein Information

Name	SNCG
Synonyms	BCSG1, PERSYN, PRSN
Function	Plays a role in neurofilament network integrity. May be involved in modulating axonal architecture during development and in the adult. In vitro, increases the susceptibility of neurofilament-H to calcium-dependent proteases (By similarity). May also function in modulating the keratin network in skin. Activates the MAPK and Elk-1 signal transduction pathway (By similarity).
Cellular Location	Cytoplasm, perinuclear region. Cytoplasm, cytoskeleton, microtubule organizing center, centrosome. Cytoplasm, cytoskeleton, spindle. Note=Associated with centrosomes in several interphase cells. In mitotic cells, localized to the poles of the spindle
Tissue Location	Highly expressed in brain, particularly in the substantia nigra. Also expressed in the corpus callosum, heart, skeletal muscle, ovary, testis, colon and spleen. Weak expression in pancreas, kidney and lung

References

1. Haiyan Liu, Wei Liu, Yinwei Wu. Cancer Res. 2005 Sep 1;65(17):7635-43. 2. Irina Surgucheva , Belinda McMahon , Andrei Surguchov. Cell Motil Cytoskeleton. 2006 May 26.

Images

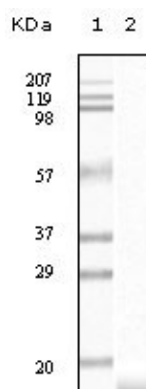


Figure 1: Western blot analysis using SNCG mouse mAb against truncated SNCG recombinant protein.

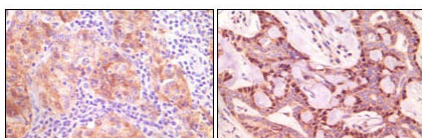


Figure 2: Immunohistochemical analysis of paraffin-embedded human ovary carcinoma (left) and breast carcinoma (right), showing cytoplasmic(ovary carcinoma) localization, cytoplasmic and nuclear (breast carcinoma) localization using SNCG mouse mAb with DAB staining.

Please note: All products are 'FOR RESEARCH USE ONLY. NOT FOR USE IN DIAGNOSTIC OR THERAPEUTIC PROCEDURES'.