

Calcyclin Antibody

Purified Mouse Monoclonal Antibody

Catalog # AO1044a

Product Information

Application	WB, IHC, E
Primary Accession	Q9HB71
Reactivity	Human
Host	Mouse
Clonality	Monoclonal
Clone Names	7D11
Isotype	IgG1
Calculated MW	26210
Description	Calcyclin encoded by this gene is a member of the S100 family of proteins containing 2 EF-hand calcium-binding motifs. S100 proteins are localized in the cytoplasm and/or nucleus of a wide range of cells, and involved in the regulation of a number of cellular processes such as cell cycle progression and differentiation. S100 genes include at least 13 members which are located as a cluster on chromosome 1q21. This protein may function in stimulation of Ca ²⁺ -dependent insulin release, stimulation of prolactin secretion, and exocytosis. Chromosomal rearrangements and altered expression of this gene have been implicated in melanoma.
Immunogen	Purified recombinant fragment of calcyclin expressed in E. Coli.
Formulation	Purified antibody in PBS containing 0.03% sodium azide.

Additional Information

Gene ID	27101
Other Names	Calcyclin-binding protein, CacyBP, hCacyBP, S100A6-binding protein, Siah-interacting protein, CACYBP, S100A6BP, SIP
Dilution	WB~~1/500 - 1/2000 IHC~~1/200 - 1/1000 E~~N/A
Storage	Maintain refrigerated at 2-8°C for up to 6 months. For long term storage store at -20°C in small aliquots to prevent freeze-thaw cycles.
Precautions	Calcyclin Antibody is for research use only and not for use in diagnostic or therapeutic procedures.

Protein Information

Name	CACYBP
-------------	--------

Synonyms	S100A6BP, SIP
Function	May be involved in calcium-dependent ubiquitination and subsequent proteasomal degradation of target proteins. Probably serves as a molecular bridge in ubiquitin E3 complexes. Participates in the ubiquitin-mediated degradation of beta-catenin (CTNNB1).
Cellular Location	Nucleus. Cytoplasm. Note=Cytoplasmic at low calcium concentrations. In neuroblastoma cells, after a retinoic acid (RA) induction and calcium increase, it localizes in both the nucleus and cytoplasm. The nuclear fraction may be phosphorylated

References

1. Bean C.et.al J Mol Biol. 2005 Jun 3;349(2):349-66. 2. HWang R.et.al J Biol Chem. 2004 May 14;279(20):21239-47.

Images

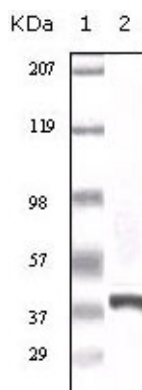


Figure 1: Western blot analysis using calcyclin mouse mAb against truncated calcyclin recombinant protein.

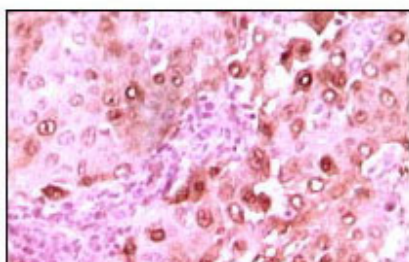


Figure 2: Immunohistochemical analysis of paraffin-embedded human brain glioma tissue showing nuclear localization using calcyclin mouse mAb with DAB staining.

Please note: All products are 'FOR RESEARCH USE ONLY. NOT FOR USE IN DIAGNOSTIC OR THERAPEUTIC PROCEDURES'.