

# CHK1 Antibody

Purified Mouse Monoclonal Antibody  
Catalog # AO1030a

## Product Information

---

<b>Application</b>	WB, E
<b>Primary Accession</b>	<a href="#">O14757</a>
<b>Reactivity</b>	Human, Mouse
<b>Host</b>	Mouse
<b>Clonality</b>	Monoclonal
<b>Clone Names</b>	2G1D5
<b>Isotype</b>	IgG1
<b>Calculated MW</b>	54434 Da
<b>Description</b>	CHK1, also known as CHEK1, it is a kinase that phosphorylates cdc25, an important phosphatase in cell cycle control, particularly for entry into mitosis. Cdc25, when phosphorylated on serine 216 by chk1 becomes bound by an adaptor protein in the cytoplasm. Therefore it is inhibited from removing the inhibiting phosphate from MPF (mitotic/maturation promoting factor) added by Wee1. Consequently, a cell is prevented from entering mitosis. Chk1 can also phosphorylate p53 at Ser20 in vitro.
<b>Immunogen</b>	Purified recombinant fragment of CHK1 expressed in E. Coli.
<b>Formulation</b>	Purified antibody in PBS containing 0.03% sodium azide.

## Additional Information

---

<b>Other Names</b>	Serine/threonine-protein kinase Chk1, 2.7.11.1, CHK1 checkpoint homolog, Cell cycle checkpoint kinase, Checkpoint kinase-1, CHEK1, CHK1
<b>Dilution</b>	WB~~1/500 - 1/2000 E~~N/A
<b>Storage</b>	Maintain refrigerated at 2-8°C for up to 6 months. For long term storage store at -20°C in small aliquots to prevent freeze-thaw cycles.
<b>Precautions</b>	CHK1 Antibody is for research use only and not for use in diagnostic or therapeutic procedures.

## Protein Information

---

## References

---

1. EMBO J. 1998. 16: 545-554.
2. Science 1998. 282: 1893-1897.

## Images

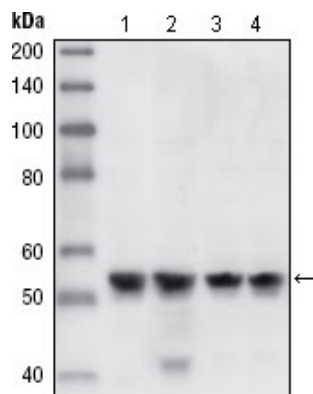


Figure 1: Western blot analysis using CHK1 mouse mAb against A431 (1), Hela (2), NIH/3T3 (3) and K562 (4) cell lysate.

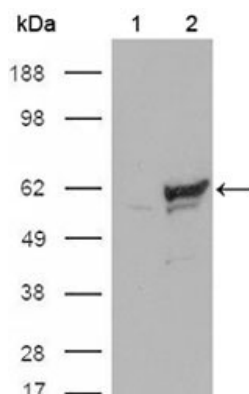


Figure 2: Western blot analysis using CHK1 mouse mAb against HEK293T cells transfected with the pCMV6-ENTRY control (1) and pCMV6-ENTRY CHK1 cDNA (2).

Please note: All products are 'FOR RESEARCH USE ONLY. NOT FOR USE IN DIAGNOSTIC OR THERAPEUTIC PROCEDURES'.