

IL-16 Antibody

Purified Mouse Monoclonal Antibody
Catalog # AO1012a

Product Information

Application	WB, E
Primary Accession	Q14005
Reactivity	Human
Host	Mouse
Clonality	Monoclonal
Clone Names	5D8
Isotype	IgG1
Calculated MW	141752 Da
Description	Interleukin-16, also known as lymphocyte chemoattractant factor (LCF), is a chemotactic cytokine that stimulates a migratory response in CD4+ lymphocytes, monocytes, and eosinophils through binding to the CD4 receptor . IL-16 induces human T-lymphocyte expression of interleukin 2 receptor and upregulates major histocompatibility complex II molecules on resting human T lymphocyte. It is able to render CD4+ T cells unresponsive to TCR/CD3 stimuli. Moreover, IL-16 inhibits the replication of T cell and monocyte tropic HIV strains in vitro.
Immunogen	Purified recombinant fragment of human IL-16 expressed in E. Coli.
Formulation	Ascitic fluid containing 0.03% sodium azide.

Additional Information

Other Names	Pro-interleukin-16, Interleukin-16, IL-16, Lymphocyte chemoattractant factor, LCF, IL16
Dilution	WB~~1/500 - 1/2000 E~~N/A
Storage	Maintain refrigerated at 2-8°C for up to 6 months. For long term storage store at -20°C in small aliquots to prevent freeze-thaw cycles.
Precautions	IL-16 Antibody is for research use only and not for use in diagnostic or therapeutic procedures.

Protein Information

References

1. Cruikshank, W.W. et al 1994. Proc. Nat. Acad. Sci. 91: 5109-5113.

Images

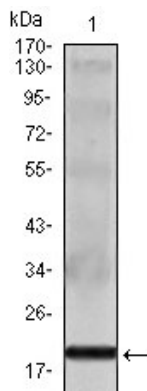


Figure 1: Western blot analysis using IL16 mouse mAb against IL16 recombinant protein.

Please note: All products are 'FOR RESEARCH USE ONLY. NOT FOR USE IN DIAGNOSTIC OR THERAPEUTIC PROCEDURES'.