

Anti-CD75 (Transferrin receptor) Antibody

Our Anti-CD75 (Transferrin receptor) mouse monoclonal primary antibody from PhosphoSolutions is prod
Catalog # AN1329

Product Information

Application	WB, IHC
Primary Accession	P15907
Host	Mouse
Clonality	Monoclonal
Isotype	IgM
Clone Names	LN1
Calculated MW	46605

Additional Information

Gene ID	6480
Other Names	6 sialyltransferase antibody, 6-sialyltransferase 1 antibody, 6-ST 1 antibody, Alpha 2 antibody, Alpha 2, 6 ST 1 antibody, Alpha 2, 6 ST antibody, B cell antigen CD75 antibody, B-cell antigen CD75 antibody, Beta galactoside alpha 2, 6 sialyltransferase 1 antibody, Beta-galactoside alpha-2 antibody, CMP N acetylneuraminate beta galactosamide alpha 2, 6 sialyltransferase 1 antibody, CMP-N-acetylneuraminate-beta-galactosamide-alpha-2 antibody, MGC48859 antibody, Sialyltransferase 1 (beta galactoside alpha 2, 6 sialyltransferase) antibody, Sialyltransferase 1 antibody, SIAT1 antibody, SIAT1_HUMAN antibody, ST6 beta galactosamide alpha 2, 6 sialyltransferase 1 antibody, ST6Gal I antibody, ST6GAL1 antibody, ST6GalI antibody, ST6N antibody

Target/Specificity	CD75, also known as β -galactoside α 2,6-sialyltransferase, is a specific carbohydrate antigen that is predominantly expressed on B cell lymphocytes. β -galactoside α 2,6-sialyltransferase is an enzyme that catalyzes the addition of sialic acid to growing carbohydrate chains of glycoproteins (Guy, K., et al, 1991). CD75 is a major component of the lymphoid cell surface that serves as a ligand for cell adhesion molecules (Paulson, J.C., et al, 1989). The LN-1 clone reacts positively with red blood cell precursors of the bone marrow, ciliated epithelial cells of the bronchus, distal tubular cells of the kidney, and ductal cells from several organs including the breast and prostate (Epstein, A.L., et al, 1984). CD75 has been shown to be superior to other B cell markers in detecting lymphocyte predominant cells through their cytoplasmic and membranous staining, especially in typical nodular lymphocyte-predominant Hodgkin lymphoma patterns (Carbone, A., et al, 2014).
--------------------	--------------------------------------------------------------------------------------------------------------------------------------------------------------------------------------------------------------------------------------------------------------------------------------------------------------------------------------------------------------------------------------------------------------------------------------------------------------------------------------------------------------------------------------------------------------------------------------------------------------------------------------------------------------------------------------------------------------------------------------------------------------------------------------------------------------------------------------------------------------------------------------------------------------------------------------------------------------------------------------------------------------------------------------------

Dilution	WB~~1:1000 IHC~~1:100~500
Format	Protein L purified
Storage	Maintain refrigerated at 2-8°C for up to 6 months. For long term storage store at -20°C in small aliquots to prevent freeze-thaw cycles.

Precautions

Anti-CD75 (Transferrin receptor) Antibody is for research use only and not for use in diagnostic or therapeutic procedures.

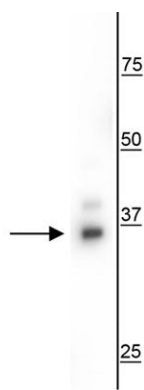
Shipping

Blue Ice

Background

CD75, also known as β -galactoside α 2,6-sialyltransferase, is a specific carbohydrate antigen that is predominantly expressed on B cell lymphocytes. β -galactoside α 2,6-sialyltransferase is an enzyme that catalyzes the addition of sialic acid to growing carbohydrate chains of glycoproteins (Guy, K., et al, 1991). CD75 is a major component of the lymphoid cell surface that serves as a ligand for cell adhesion molecules (Paulson, J.C., et al, 1989). The LN-1 clone reacts positively with red blood cell precursors of the bone marrow, ciliated epithelial cells of the bronchus, distal tubular cells of the kidney, and ductal cells from several organs including the breast and prostate (Epstein, A.L., et al, 1984). CD75 has been shown to be superior to other B cell markers in detecting lymphocyte predominant cells through their cytoplasmic and membranous staining, especially in typical nodular lymphocyte-predominant Hodgkin lymphoma patterns (Carbone, A., et al, 2014).

Images



Western blot of T47D cell lysate showing specific immunolabeling of the ~35 kDa CD75 protein.

Please note: All products are 'FOR RESEARCH USE ONLY. NOT FOR USE IN DIAGNOSTIC OR THERAPEUTIC PROCEDURES'.