

# PDCD1LG2 Antibody (N-term)

Purified Mouse Monoclonal Antibody (Mab)  
Catalog # AM8680b

## Product Information

---

<b>Application</b>	WB, IHC-P, E
<b>Primary Accession</b>	<a href="#">Q9BQ51</a>
<b>Reactivity</b>	Human
<b>Host</b>	Mouse
<b>Clonality</b>	monoclonal
<b>Isotype</b>	IgG1, $\kappa$
<b>Clone Names</b>	2011CT265.19.18

## Additional Information

---

<b>Other Names</b>	Programmed cell death 1 ligand 2, PD-1 ligand 2, PD-L2, PDCD1 ligand 2, Programmed death ligand 2, Butyrophilin B7-DC, B7-DC, CD273, PDCD1LG2, B7DC, CD273, PDCD1L2, PDL2
<b>Target/Specificity</b>	This PDCD1LG2 antibody is generated from a mouse immunized with a KLH conjugated synthetic peptide between 40-75 amino acids from the N-terminal region of human PDCD1LG2.
<b>Dilution</b>	WB~1:8000 IHC-P~1:100~500 E~Use at an assay dependent concentration.
<b>Format</b>	Purified monoclonal antibody supplied in PBS with 0.09% (W/V) sodium azide. This antibody is purified through a protein G column, followed by dialysis against PBS.
<b>Storage</b>	Maintain refrigerated at 2-8°C for up to 2 weeks. For long term storage store at -20°C in small aliquots to prevent freeze-thaw cycles.
<b>Precautions</b>	PDCD1LG2 Antibody (N-term) is for research use only and not for use in diagnostic or therapeutic procedures.

## Protein Information

---

### Background

---

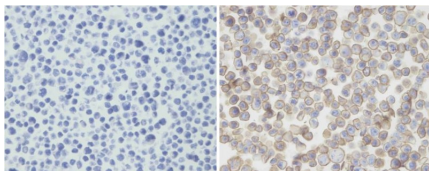
Involved in the costimulatory signal, essential for T- cell proliferation and IFNG production in a PDCD1-independent manner. Interaction with PDCD1 inhibits T-cell proliferation by blocking cell cycle progression and cytokine production (By similarity).

### References

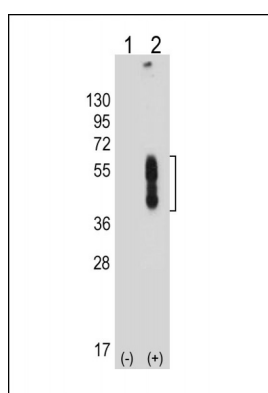
---

Tseng S.-Y., et al. *J. Exp. Med.* 193:839-846(2001).  
Latchman Y., et al. *Nat. Immunol.* 2:261-268(2001).  
He X.-H., et al. *Acta Biochim. Biophys. Sin.* 36:284-289(2004).  
Humphray S.J., et al. *Nature* 429:369-374(2004).  
Zhang Z., et al. *Protein Sci.* 13:2819-2824(2004).

## Images



Immunohistochemical analysis of PDL-2 in untransfected(left) or transfected(right) with 293T cell sections. Cell was fixed with formaldehyde; antigen retrieval was by heat mediation with a EDTA buffer (pH9.0). Samples were incubated with primary antibody (1:25) for 1 hours at room temperature. A undiluted biotinylated goat polyvalent antibody was used as the secondary antibody.



All lanes : Anti-PDCD1LG2 Antibody (N-term) at 1:8000 dilution  
Lane 1: Non-transfected 293T whole cell lysate  
Lane 2: Transfected PD-L2-transfected 293T whole cell lysate  
Lysates/proteins at 20 µg per lane. Secondary Goat Anti-mouse IgG, (H+L), Peroxidase conjugated at 1/10000 dilution. Predicted band size : 31 kDa  
Blocking/Dilution buffer: 5% NFDN/TBST.

Please note: All products are 'FOR RESEARCH USE ONLY. NOT FOR USE IN DIAGNOSTIC OR THERAPEUTIC PROCEDURES'.