

# PDCD1LG2 Antibody (N-term)

Purified Mouse Monoclonal Antibody (Mab)

Catalog # AM8679b

## Product Information

---

<b>Application</b>	WB, IHC-P, E
<b>Primary Accession</b>	<a href="#">Q9BQ51</a>
<b>Reactivity</b>	Human
<b>Host</b>	Mouse
<b>Clonality</b>	monoclonal
<b>Isotype</b>	IgG1, $\kappa$
<b>Clone Names</b>	2011CT241.19.54
<b>Calculated MW</b>	30957

## Additional Information

---

<b>Gene ID</b>	80380
<b>Other Names</b>	Programmed cell death 1 ligand 2, PD-1 ligand 2, PD-L2, PDCD1 ligand 2, Programmed death ligand 2, Butyrophilin B7-DC, B7-DC, CD273, PDCD1LG2, B7DC, CD273, PDCD1L2, PDL2
<b>Target/Specificity</b>	This PDCD1LG2 antibody is generated from a mouse immunized with a KLH conjugated synthetic peptide between 40-75 amino acids from the N-terminal region of human PDCD1LG2.
<b>Dilution</b>	WB~~1:4000 IHC-P~~1:100~500 E~~Use at an assay dependent concentration.
<b>Format</b>	Purified monoclonal antibody supplied in PBS with 0.09% (W/V) sodium azide. This antibody is purified through a protein G column, followed by dialysis against PBS.
<b>Storage</b>	Maintain refrigerated at 2-8°C for up to 2 weeks. For long term storage store at -20°C in small aliquots to prevent freeze-thaw cycles.
<b>Precautions</b>	PDCD1LG2 Antibody (N-term) is for research use only and not for use in diagnostic or therapeutic procedures.

## Protein Information

---

<b>Name</b>	PDCD1LG2
<b>Synonyms</b>	B7DC, CD273, PDCD1L2, PDL2
<b>Function</b>	Plays a critical role in induction and maintenance of immune tolerance to self (PubMed: <a href="#">11224527</a> , PubMed: <a href="#">12538684</a> ). Acts as a ligand for the inhibitory

receptor PDCD1/PD-1, inhibiting T-cell proliferation by blocking cell cycle progression and cytokine production (PubMed:[11224527](#)).

**Cellular Location** [Isoform 3]: Secreted [Isoform 1]: Cell membrane; Single-pass type I membrane protein

**Tissue Location** Highly expressed in heart, placenta, pancreas, lung and liver and weakly expressed in spleen, lymph nodes and thymus

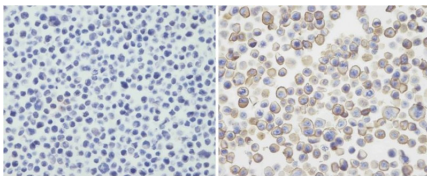
## Background

Involved in the costimulatory signal, essential for T- cell proliferation and IFNG production in a PDCD1-independent manner. Interaction with PDCD1 inhibits T-cell proliferation by blocking cell cycle progression and cytokine production (By similarity).

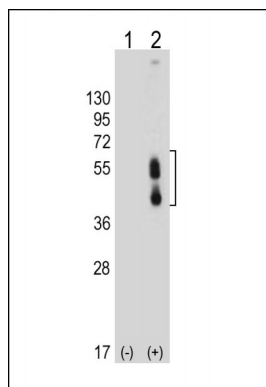
## References

- Tseng S.-Y.,et al.J. Exp. Med. 193:839-846(2001).  
Latchman Y.,et al.Nat. Immunol. 2:261-268(2001).  
He X.-H.,et al.Acta Biochim. Biophys. Sin. 36:284-289(2004).  
Humphray S.J.,et al.Nature 429:369-374(2004).  
Zhang Z.,et al.Protein Sci. 13:2819-2824(2004).

## Images



Immunohistochemical analysis of PDL-2 in untransfected(left) or transfected(right) with 293T cell sections. Cell was fixed with formaldehyde; antigen retrieval was by heat mediation with a EDTA buffer (pH9.0). Samples were incubated with primary antibody (1:25) for 1 hours at room temperature. A undiluted biotinylated goat polyvalent antibody was used as the secondary antibody.



All lanes : Anti-PDCD1LG2 Antibody (N-term) at 1:4000 dilution  
Lane 1: Non-transfected 293T whole cell lysate  
Lane 2: Transfected PD-L2-transfected 293T whole cell lysate  
Lysates/proteins at 20 µg per lane. Secondary Goat Anti-mouse IgG, (H+L), Peroxidase conjugated at 1/10000 dilution. Predicted band size : 31 kDa  
Blocking/Dilution buffer: 5% NFDM/TBST.

Please note: All products are 'FOR RESEARCH USE ONLY. NOT FOR USE IN DIAGNOSTIC OR THERAPEUTIC PROCEDURES'.