

human CD25 Antibody

Purified Mouse Monoclonal Antibody (Mab)

Catalog # AM8656b

Product Information

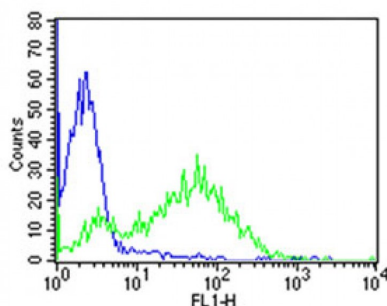
Primary Accession	unknow
Reactivity	Human
Host	Mouse
Clonality	Monoclonal
Isotype	IgG2a
Clone Names	7G7B6 Equivalent

Additional Information

Dilution	FC~~1:50 E~~Use at an assay dependent concentration.
Format	Purified monoclonal antibody supplied in PBS with 0.09% (W/V) sodium azide. This antibody is purified through a protein G column, followed by dialysis against PBS.
Storage	Maintain refrigerated at 2-8°C for up to 2 weeks. For long term storage store at -20°C in small aliquots to prevent freeze-thaw cycles.
Precautions	human CD25 Antibody is for research use only and not for use in diagnostic or therapeutic procedures.

Protein Information

Images



Overlay histogram showing PHA-stimulated human peripheral blood lymphocytes stained with CD25 antibody(green line). The cells were incubated in 2% bovine serum albumin to block non-specific protein-protein interactions followed by the antibody (1:50 dilution) for 60min at 37°C. The secondary antibody used was Goat Anti-Mouse IgG, DyLight® 488 Conjugated Highly Cross-Adsorbed(OJ192088) at 1/200 dilution for 40min at 37°C. Isotype control antibody (blue line) was mouse IgG2a (1 µg/1x10⁶ cells) used under the same conditions. Acquisition of >10, 000 events was performed.