

SMAD1 Antibody

Purified Mouse Monoclonal Antibody (Mab)

Catalog # AM8604b

Product Information

Application	WB, IHC-P, IF, E
Primary Accession	Q15797
Reactivity	Human
Host	Mouse
Clonality	monoclonal
Isotype	IgG1,k
Clone Names	1356CT119.18.55
Calculated MW	52260

Additional Information

Gene ID	4086
Other Names	Mothers against decapentaplegic homolog 1, MAD homolog 1, Mothers against DPP homolog 1, JV4-1, Mad-related protein 1, SMAD family member 1, SMAD 1, Smad1, hSMAD1, Transforming growth factor-beta-signaling protein 1, BSP-1, SMAD1, BSP1, MADH1, MADR1
Target/Specificity	This SMAD1 antibody is generated from a mouse immunized with a recombinant protein between 20-330 amino acids from human SMAD1.
Dilution	WB~~1:2000 IHC-P~~1:100~500 IF~~1:25 E~~Use at an assay dependent concentration.
Format	Purified monoclonal antibody supplied in PBS with 0.09% (W/V) sodium azide. This antibody is purified through a protein G column, followed by dialysis against PBS.
Storage	Maintain refrigerated at 2-8°C for up to 2 weeks. For long term storage store at -20°C in small aliquots to prevent freeze-thaw cycles.
Precautions	SMAD1 Antibody is for research use only and not for use in diagnostic or therapeutic procedures.

Protein Information

Name	SMAD1 (HGNC:6767)
Synonyms	BSP1, MADH1, MADR1
Function	Transcriptional modulator that plays a role in various cellular processes,

including embryonic development, cell differentiation, and tissue homeostasis (PubMed:[9335504](#)). Upon BMP ligand binding to their receptors at the cell surface, is phosphorylated by activated type I BMP receptors (BMPRIIs) and associates with SMAD4 to form a heteromeric complex which translocates into the nucleus acting as transcription factor (PubMed:[33667543](#)). In turn, the hetero-trimeric complex recognizes cis-regulatory elements containing Smad Binding Elements (SBEs) to modulate the outcome of the signaling network (PubMed:[33667543](#)). SMAD1/OAZ1/PSMB4 complex mediates the degradation of the CREBBP/EP300 repressor SNIP1. Positively regulates BMP4-induced expression of odontogenic development regulator MSX1 following IPO7-mediated nuclear import (By similarity).

Cellular Location

Cytoplasm. Nucleus Note=Cytoplasmic in the absence of ligand. Migrates to the nucleus when complexed with SMAD4 (PubMed:15647271). Co-localizes with LEMD3 at the nucleus inner membrane (PubMed:15647271). Exported from the nucleus to the cytoplasm when dephosphorylated (By similarity) {ECO:0000250|UniProtKB:P70340, ECO:0000269|PubMed:15647271}

Tissue Location

Ubiquitous. Highest expression seen in the heart and skeletal muscle

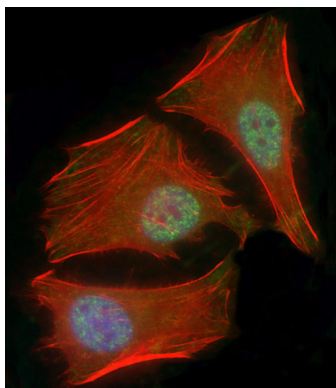
Background

Transcriptional modulator activated by BMP (bone morphogenetic proteins) type 1 receptor kinase. SMAD1 is a receptor-regulated SMAD (R-SMAD). SMAD1/OAZ1/PSMB4 complex mediates the degradation of the CREBBP/EP300 repressor SNIP1. May act synergistically with SMAD4 and YY1 in bone morphogenetic protein (BMP)-mediated cardiac-specific gene expression.

References

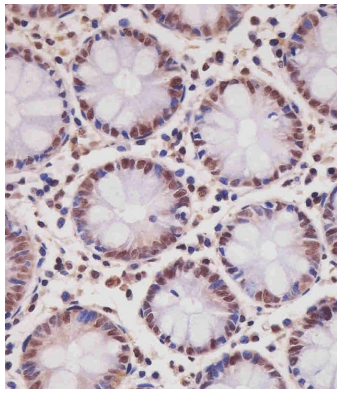
Riggins G.J.,et al.Nat. Genet. 13:347-349(1996).
Liu F.,et al.Nature 381:620-623(1996).
Hoodless P.A.,et al.Cell 85:489-500(1996).
Lechleider R.J.,et al.J. Biol. Chem. 271:17617-17620(1996).
Zhang Y.,et al.Nature 383:168-172(1996).

Images

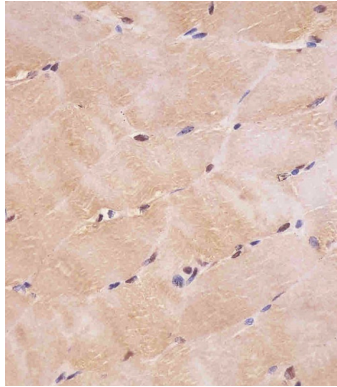


Immunofluorescent analysis of 4% paraformaldehyde-fixed, 0.1% Triton X-100 permeabilized HeLa (human cervical epithelial adenocarcinoma cell line) cells labeling SMAD1 with AM8604b at 1/25 dilution, followed by Dylight® 488-conjugated goat anti-mouse IgG (NH174309) secondary antibody at 1/200 dilution (green). Immunofluorescence image showing nucleus and weak cytoplasm staining on HeLa cell line. Cytoplasmic actin is detected with Dylight® 554 Phalloidin (OI17558410) at 1/100 dilution (red). The nuclear counter stain is DAPI (blue).

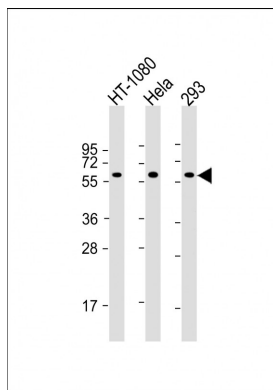
AM8604b staining SMAD1 in human colon tissue sections by Immunohistochemistry (IHC-P - paraformaldehyde-fixed, paraffin-embedded sections). Tissue was fixed with formaldehyde and blocked with 3% BSA for 0.5 hour at room temperature; antigen retrieval



was by heat mediation with a citrate buffer (pH6). Samples were incubated with primary antibody (1/25) for 1 hours at 37°C. A undiluted biotinylated goat polyvalent antibody was used as the secondary antibody.



AM8604b staining SMAD1 in human skeletal muscle tissue sections by Immunohistochemistry (IHC-P - paraformaldehyde-fixed, paraffin-embedded sections). Tissue was fixed with formaldehyde and blocked with 3% BSA for 0.5 hour at room temperature; antigen retrieval was by heat mediation with a citrate buffer (pH6). Samples were incubated with primary antibody (1/25) for 1 hours at 37°C. A undiluted biotinylated goat polyvalent antibody was used as the secondary antibody.



All lanes : Anti-SMAD1 Antibody at 1:2000 dilution Lane 1: HT-1080 whole cell lysate Lane 2: HeLa whole cell lysate Lane 3: 293 whole cell lysate Lysates/proteins at 20 µg per lane. Secondary Goat Anti-mouse IgG, (H+L), Peroxidase conjugated at 1/10000 dilution. Predicted band size : 60 kDa Blocking/Dilution buffer: 5% NFDM/TBST.

Please note: All products are 'FOR RESEARCH USE ONLY. NOT FOR USE IN DIAGNOSTIC OR THERAPEUTIC PROCEDURES'.