

ETS1 Antibody

Purified Mouse Monoclonal Antibody (Mab)

Catalog # AM8521b

Product Information

Application	WB, FC, E
Primary Accession	P14921
Reactivity	Human, Rat, Mouse
Host	Mouse
Clonality	monoclonal
Isotype	IgG2b,k
Clone Names	1601CT512.35.61
Calculated MW	50408

Additional Information

Gene ID	2113
Other Names	Protein C-ets-1, p54, ETS1, EWSR2
Target/Specificity	This ETS1 antibody is generated from a mouse immunized with a recombinant protein of human ETS1.
Dilution	WB~~1:500 FC~~1:25 E~~Use at an assay dependent concentration.
Format	Purified monoclonal antibody supplied in PBS with 0.09% (W/V) sodium azide. This antibody is purified through a protein G column, followed by dialysis against PBS.
Storage	Maintain refrigerated at 2-8°C for up to 2 weeks. For long term storage store at -20°C in small aliquots to prevent freeze-thaw cycles.
Precautions	ETS1 Antibody is for research use only and not for use in diagnostic or therapeutic procedures.

Protein Information

Name	ETS1
Synonyms	EWSR2
Function	Transcription factor (PubMed: 10698492 , PubMed: 11909962). Directly controls the expression of cytokine and chemokine genes in a wide variety of different cellular contexts (PubMed: 20378371). May control the differentiation, survival and proliferation of lymphoid cells (PubMed: 20378371). May also regulate angiogenesis through regulation of

expression of genes controlling endothelial cell migration and invasion (PubMed:[15247905](#), PubMed:[15592518](#)).

Cellular Location

Nucleus. Cytoplasm Note=Delocalizes from nucleus to cytoplasm when coexpressed with isoform Ets-1 p27.

Tissue Location

Highly expressed within lymphoid cells. Isoforms c- ETS-1A and Ets-1 p27 are both detected in all fetal tissues tested, but vary with tissue type in adult tissues. None is detected in brain or kidney.

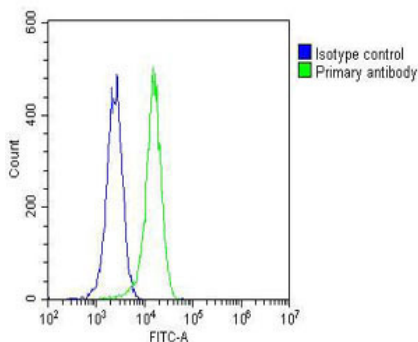
Background

Transcription factor. Directly controls the expression of cytokine and chemokine genes in a wide variety of different cellular contexts. May control the differentiation, survival and proliferation of lymphoid cells. May also regulate angiogenesis through regulation of expression of genes controlling endothelial cell migration and invasion.

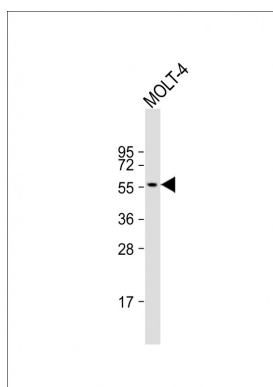
References

Reddy E.S.P.,et al.Oncogene Res. 3:239-246(1988).
Watson D.K.,et al.Proc. Natl. Acad. Sci. U.S.A. 85:7862-7866(1988).
Laitem C.,et al.Oncogene 28:2087-2099(2009).
Kalnine N.,et al.Submitted (MAY-2003) to the EMBL/GenBank/DDBJ databases.
Bechtel S.,et al.BMC Genomics 8:399-399(2007).

Images



Overlay histogram showing K562 cells stained with AM8521b(green line). The cells were fixed with 2% paraformaldehyde (10 min) and then permeabilized with 90% methanol for 10 min. The cells were then incubated in 2% bovine serum albumin to block non-specific protein-protein interactions followed by the antibody (AM8521b, 1:25 dilution) for 60 min at 37°C. The secondary antibody used was Goat-Anti-Mouse IgG, DyLight® 488 Conjugated Highly Cross-Adsorbed(OJ192088) at 1/200 dilution for 40 min at 37°C. Isotype control antibody (blue line) was mouse IgG2b (1µg/1x10⁶ cells) used under the same conditions. Acquisition of >10, 000 events was performed.



Anti-ETS1 Antibody at 1:500 dilution + MOLT-4 whole cell lysates Lysates/proteins at 20 µg per lane. Secondary Goat Anti-mouse IgG, (H+L), Peroxidase conjugated at 1/10000 dilution. Predicted band size : 50 kDa Blocking/Dilution buffer: 5% NFDM/TBST.

Please note: All products are 'FOR RESEARCH USE ONLY. NOT FOR USE IN DIAGNOSTIC OR THERAPEUTIC PROCEDURES'.