

Beta-actin Antibody, HRP Conjugate

Purified Mouse Monoclonal Antibody (Mab)

Catalog # AM8502b

Product Information

Application	WB, E
Primary Accession	unknow
Reactivity	Human
Host	Mouse
Clonality	monoclonal
Isotype	IgG1,Igk
Clone Names	137CT26.1.1

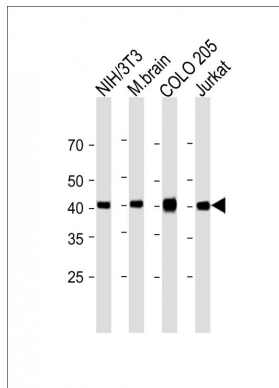
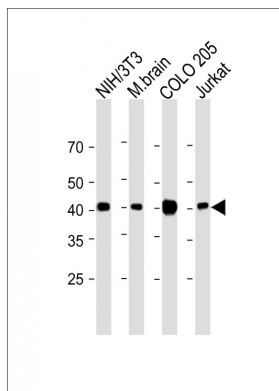
Additional Information

Other Names	ACTB
Target/Specificity	This Beta-actin antibody is generated from a mouse immunized with a recombinant protein.
Dilution	WB~~1:2000 E~~Use at an assay dependent concentration.
Format	PBS with 50% glycerol
Storage	Maintain refrigerated at 2-8°C for up to 2 weeks. For long term storage store at -20°C in small aliquots to prevent freeze-thaw cycles.
Precautions	Beta-actin Antibody, HRP Conjugate is for research use only and not for use in diagnostic or therapeutic procedures.

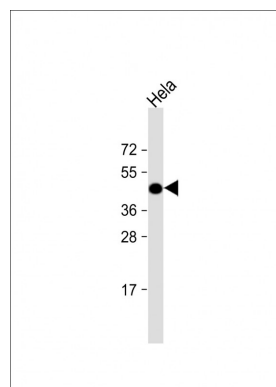
Protein Information

Images

Anti-ACTB Antibody, HRP Conjugate at 1:2000 dilution
Lane 1: NIH/3T3 whole cell lysate Lane 2: Mouse brain
lysate Lane 3: COLO 205 whole cell lysate Lane 4: Jurkat
whole cell lysate Lysates/proteins at 20 µg per lane.
Observed band size: 42 KDa Blocking/Dilution buffer: 5%
NFDM/TBST.



Anti-ACTB Antibody, HRP Conjugate at 1:2000 dilution
 Lane 1: NIH/3T3 whole cell lysate Lane 2: Mouse brain lysate Lane 3: COLO 205 whole cell lysate Lane 4: Jurkat whole cell lysate Lysates/proteins at 20 µg per lane.
 Observed band size: 42 KDa Blocking/Dilution buffer: 5% NFDM/TBST.



Anti-ACTB Antibody, HRP Conjugate at 1:2000 dilution +
 HeLa whole cell lysate Lysates/proteins at 20 µg per lane.
 Predicted band size : 42 kDa Blocking/Dilution buffer: 5% NFDM/TBST.

Please note: All products are 'FOR RESEARCH USE ONLY. NOT FOR USE IN DIAGNOSTIC OR THERAPEUTIC PROCEDURES'.