

ALDOC Antibody (C-term)(Ascites)

Mouse Monoclonal Antibody (Mab)

Catalog # AM2215a

Product Information

Application	WB, E
Primary Accession	P09972
Reactivity	Human, Mouse
Host	Mouse
Clonality	Monoclonal
Isotype	IgG3
Clone Names	859CT9.5.3
Calculated MW	39456

Additional Information

Gene ID	230
Other Names	Fructose-bisphosphate aldolase C, Brain-type aldolase, ALDOC, ALDC
Target/Specificity	Purified His-tagged ALDOC protein was used to produced this monoclonal antibody.
Dilution	WB~~1:5000 E~~Use at an assay dependent concentration.
Format	Mouse monoclonal antibody supplied in crude ascites with 0.09% (W/V) sodium azide.
Storage	Maintain refrigerated at 2-8°C for up to 2 weeks. For long term storage store at -20°C in small aliquots to prevent freeze-thaw cycles.
Precautions	ALDOC Antibody (C-term)(Ascites) is for research use only and not for use in diagnostic or therapeutic procedures.

Protein Information

Name	ALDOC (HGNC:418)
Synonyms	ALDC
Function	Catalyzes the reversible conversion of beta-D-fructose 1,6- bisphosphate (FBP) into two triose phosphate and plays a key role in glycolysis and gluconeogenesis.

References

Rottmann W.H., et al. Biochimie 69:137-145(1987).

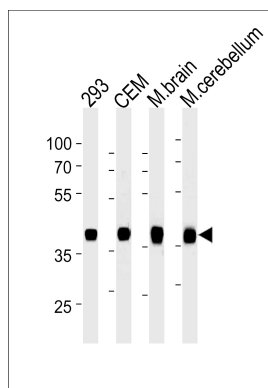
Buono P., et al. Nucleic Acids Res. 16:4733-4733(1988).

Buono P., et al. Eur. J. Biochem. 192:805-811(1990).

Yu W., et al. Submitted (MAR-1998) to the EMBL/GenBank/DDBJ databases.

Kalnine N., et al. Submitted (MAY-2003) to the EMBL/GenBank/DDBJ databases.

Images



ALDOC Antibody (C-term)(Cat. #AM2215a) western blot analysis in 293,CEM cell line and mouse brain,cerebellum tissue lysates (35µg/lane).This demonstrates the ALDOC antibody detected the ALDOC protein (arrow).

Please note: All products are 'FOR RESEARCH USE ONLY. NOT FOR USE IN DIAGNOSTIC OR THERAPEUTIC PROCEDURES'.