

CYK18 Antibody (C-term)

Mouse Monoclonal Antibody (Mab)

Catalog # AM2178b

Product Information

Application	WB, E
Primary Accession	P05783
Reactivity	Human
Host	Mouse
Clonality	Monoclonal
Isotype	IgG3
Clone Names	695CT17.2.6
Calculated MW	48058

Additional Information

Gene ID	3875
Other Names	Keratin, type I cytoskeletal 18, Cell proliferation-inducing gene 46 protein, Cytokeratin-18, CK-18, Keratin-18, K18, KRT18, CYK18
Target/Specificity	This CYK18 Monoclonal antibody is generated from mice immunized with a KLH conjugated synthetic peptide selected from the 400-430 region of human CYK18.
Dilution	WB~1:1000 E~Use at an assay dependent concentration.
Format	Purified monoclonal antibody supplied in PBS with 0.09% (W/V) sodium azide. This antibody is purified through a protein G column, followed by dialysis against PBS.
Storage	Maintain refrigerated at 2-8°C for up to 2 weeks. For long term storage store at -20°C in small aliquots to prevent freeze-thaw cycles.
Precautions	CYK18 Antibody (C-term) is for research use only and not for use in diagnostic or therapeutic procedures.

Protein Information

Name	KRT18 (HGNC:6430)
Synonyms	CYK18
Function	Required for the formation of KRT8/KRT18 filaments that are involved in ARHGEF40-mediated actin stress fiber formation and tensional force-induced stress fiber formation and reinforcement (PubMed: 26823019). Also acts

downstream of ROCK kinase activation as part of a positive feedback mechanism in response to cellular mechanical stress loading (PubMed:[26823019](#)). Organization and orientation of KRT18 filaments are responsible for the properly elongated morphology of epithelial tubules (By similarity). Involved in the uptake of thrombin-antithrombin complexes by hepatic cells (By similarity). When phosphorylated, plays a role in filament reorganization. Involved in the delivery of mutated CFTR to the plasma membrane. Together with KRT8, is involved in interleukin-6 (IL-6)- mediated barrier protection.

Cellular Location

Nucleus matrix {ECO:0000250|UniProtKB:Q5BJY9}. Cytoplasm, perinuclear region. Nucleus, nucleolus. Cytoplasm {ECO:0000250|UniProtKB:Q5BJY9}

Tissue Location

Expressed in colon, placenta, liver and very weakly in exocervix. Increased expression observed in lymph nodes of breast carcinoma.

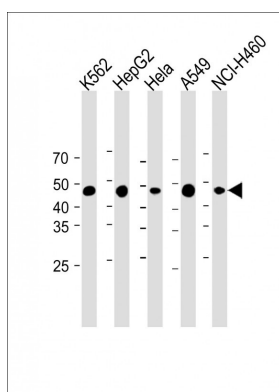
Background

Involved in the uptake of thrombin-antithrombin complexes by hepatic cells (By similarity). When phosphorylated, plays a role in filament reorganization. Involved in the delivery of mutated CFTR to the plasma membrane. Together with KRT8, is involved in interleukin-6 (IL-6)-mediated barrier protection.

References

- Oshima R.G., et al. Differentiation 33:61-68(1986).
Kim J.W., et al. Submitted (SEP-2004) to the EMBL/GenBank/DDBJ databases.
Kalnine N., et al. Submitted (OCT-2004) to the EMBL/GenBank/DDBJ databases.
Suzuki Y., et al. Submitted (APR-2005) to the EMBL/GenBank/DDBJ databases.
Kulesh D.A., et al. Mol. Cell. Biol. 8:1540-1550(1988).

Images



All lanes: Anti-CYK18 Antibody (C-term) at 1:1000 dilution
Lane 1: K562 whole cell lysate Lane 2: HepG2 whole cell lysate
Lane 3: HeLa whole cell lysate Lane 4: A549 whole cell lysate
Lane 5: NCI-H460 whole cell lysate
Lysates/proteins at 20 µg per lane. Secondary: Goat Anti-Mouse IgG, (H+L), Peroxidase conjugated (ASP1613) at 1/8000 dilution. Observed band size: 48 KDa
Blocking/Dilution buffer: 5% NFDm/TBST.

Please note: All products are 'FOR RESEARCH USE ONLY. NOT FOR USE IN DIAGNOSTIC OR THERAPEUTIC PROCEDURES'.