

# C3 Antibody (C-term)

Mouse Monoclonal Antibody (Mab)

Catalog # AM2085a

## Product Information

---

<b>Application</b>	WB, E
<b>Primary Accession</b>	<a href="#">P01024</a>
<b>Other Accession</b>	<a href="#">NP_000055.2</a>
<b>Reactivity</b>	Human
<b>Host</b>	Mouse
<b>Clonality</b>	Monoclonal
<b>Isotype</b>	IgG1
<b>Clone Names</b>	567CT11.2.3
<b>Calculated MW</b>	187148
<b>Antigen Region</b>	1353-1382

## Additional Information

---

<b>Gene ID</b>	718
<b>Other Names</b>	Complement C3, C3 and PZP-like alpha-2-macroglobulin domain-containing protein 1, Complement C3 beta chain, C3-beta-c, C3bc, Complement C3 alpha chain, C3a anaphylatoxin, Acylation stimulating protein, ASP, C3adesArg, Complement C3b alpha' chain, Complement C3c alpha' chain fragment 1, Complement C3dg fragment, Complement C3g fragment, Complement C3d fragment, Complement C3f fragment, Complement C3c alpha' chain fragment 2, C3, CPAMD1
<b>Target/Specificity</b>	This C3 antibody is generated from mice immunized with a KLH conjugated synthetic peptide between 1353-1382 amino acids from the C-terminal region of human C3.
<b>Dilution</b>	WB~~1:500~1600 E~~Use at an assay dependent concentration.
<b>Format</b>	Purified monoclonal antibody supplied in PBS with 0.09% (W/V) sodium azide. This antibody is purified through a protein G column, followed by dialysis against PBS.
<b>Storage</b>	Maintain refrigerated at 2-8°C for up to 2 weeks. For long term storage store at -20°C in small aliquots to prevent freeze-thaw cycles.
<b>Precautions</b>	C3 Antibody (C-term) is for research use only and not for use in diagnostic or therapeutic procedures.

## Protein Information

---

<b>Name</b>	C3 {ECO:0000303 PubMed:2579379, ECO:0000312 HGNC:HGNC:1318}
<b>Function</b>	Precursor of non-enzymatic components of the classical, alternative, lectin and GZMK complement pathways, which consist in a cascade of proteins that leads to phagocytosis and breakdown of pathogens and signaling that strengthens the adaptive immune system.
<b>Cellular Location</b>	Secreted. [C3a anaphylatoxin]: Secreted
<b>Tissue Location</b>	Plasma..

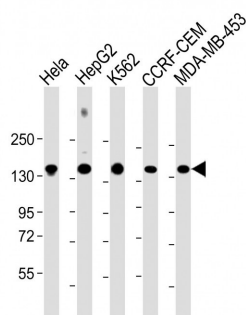
## Background

Complement component C3 plays a central role in the activation of complement system. Its activation is required for both classical and alternative complement activation pathways. People with C3 deficiency are susceptible to bacterial infection.

## References

Martinez-Barricarte, R., et al. J. Clin. Invest. 120(10):3702-3712(2010)  
Ruan, B.H., et al. J. Immunol. 185(7):4213-4222(2010)  
Luo, S., et al. J. Immunol. 185(4):2164-2173(2010)  
Zerbib, J., et al. Mol. Vis. 16, 1324-1330 (2010) :  
Johnatty, S.E., et al. PLoS Genet. 6 (7), E1001016 (2010) :

## Images



All lanes : Anti-C3 Antibody (C-term) at 1:2000 dilution  
Lane 1: HeLa whole cell lysate Lane 2: HepG2 whole cell lysate Lane 3: K562 whole cell lysate Lane 4: CCRF-CEM whole cell lysate Lane 5: MDA-MB-453 whole cell lysate  
Lysates/proteins at 20 µg per lane. Secondary Goat Anti-mouse IgG, (H+L), Peroxidase conjugated at 1/10000 dilution. Predicted band size : 187 kDa Blocking/Dilution buffer: 5% NFDM/TBST.

Please note: All products are 'FOR RESEARCH USE ONLY. NOT FOR USE IN DIAGNOSTIC OR THERAPEUTIC PROCEDURES'.