

CYP1A2 Antibody (Ascites)

Mouse Monoclonal Antibody (Mab)

Catalog # AM2066a

Product Information

Application	WB, E
Primary Accession	P05177
Other Accession	NP_000752.2
Reactivity	Human
Host	Mouse
Clonality	Monoclonal
Isotype	IgG3
Clone Names	499CT13.2.2
Antigen Region	255-282

Additional Information

Other Names	Cytochrome P450 1A2, CYP1A2, Cytochrome P(3)450, Cytochrome P450 4, Cytochrome P450-P3, CYP1A2
Target/Specificity	This CYP1A2 antibody is generated from mice immunized with a KLH conjugated synthetic peptide between 255-282 amino acids from human CYP1A2.
Dilution	WB~1:500~2000 E~Use at an assay dependent concentration.
Format	Mouse monoclonal antibody supplied in crude ascites with 0.09% (W/V) sodium azide.
Storage	Maintain refrigerated at 2-8°C for up to 2 weeks. For long term storage store at -20°C in small aliquots to prevent freeze-thaw cycles.
Precautions	CYP1A2 Antibody (Ascites) is for research use only and not for use in diagnostic or therapeutic procedures.

Protein Information

Background

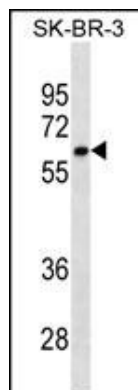
This gene encodes a member of the cytochrome P450 superfamily of enzymes. The cytochrome P450 proteins are monooxygenases which catalyze many reactions involved in drug metabolism and synthesis of cholesterol, steroids and other lipids. The protein encoded by this gene localizes to the endoplasmic reticulum and its expression is induced by some polycyclic aromatic hydrocarbons (PAHs), some of which are found in cigarette smoke. The enzyme's endogenous substrate is unknown; however, it is able to metabolize some PAHs to carcinogenic intermediates. Other xenobiotic substrates for this enzyme include

caffeine, aflatoxin B1, and acetaminophen. The transcript from this gene contains four Alu sequences flanked by direct repeats in the 3' untranslated region.

References

- Gentile, G., et al. J Headache Pain 11(5):431-435(2010)
Uslu, A., et al. BMB Rep 43(8):530-534(2010)
Wang, X., et al. J. Pharm. Pharmacol. 62(8):1077-1083(2010)
Schmidt, R.J., et al. Birth Defects Res. Part A Clin. Mol. Teratol. 88(7):560-569(2010)
Jiang, Z., et al. Pharmacogenet. Genomics 16(5):359-367(2006)

Images



CYP1A2 Antibody (Cat. #AM2066a) western blot analysis in SK-BR-3 cell line lysates (35µg/lane). This demonstrates the CYP1A2 antibody detected the CYP1A2 protein (arrow).

Please note: All products are 'FOR RESEARCH USE ONLY. NOT FOR USE IN DIAGNOSTIC OR THERAPEUTIC PROCEDURES'.