

# Interferon-alpha Antibody

Mouse Monoclonal Antibody (Mab)

Catalog # AM1913b

## Product Information

---

<b>Application</b>	WB, E
<b>Primary Accession</b>	<a href="#">P01562</a>
<b>Reactivity</b>	Human
<b>Host</b>	Mouse
<b>Clonality</b>	Monoclonal
<b>Isotype</b>	IgG1,k
<b>Clone Names</b>	278CT1

## Additional Information

---

<b>Other Names</b>	Interferon alpha-1/13, IFN-alpha-1/13, Interferon alpha-D, LeIF D, IFNA1
<b>Target/Specificity</b>	This Interferon-alpha monoclonal antibody is generated from mouse immunized with Interferon-alpha recombinant protein.
<b>Dilution</b>	WB~~1:500~1:1000 E~~Use at an assay dependent concentration.
<b>Format</b>	Purified monoclonal antibody supplied in PBS with 0.09% (W/V) sodium azide. This antibody is purified through a protein G column, followed by dialysis against PBS.
<b>Storage</b>	Maintain refrigerated at 2-8°C for up to 2 weeks. For long term storage store at -20°C in small aliquots to prevent freeze-thaw cycles.
<b>Precautions</b>	Interferon-alpha Antibody is for research use only and not for use in diagnostic or therapeutic procedures.

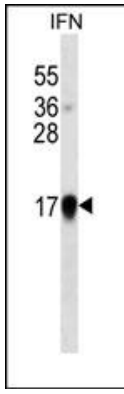
## Protein Information

---

## Images

---

Interferon-alpha western blot analysis in IFN cell line lysates (35µg/lane).This demonstrates the Interferon-alpha antibody detected the Interferon-alpha protein (arrow).



Please note: All products are 'FOR RESEARCH USE ONLY. NOT FOR USE IN DIAGNOSTIC OR THERAPEUTIC PROCEDURES'.