

HSPA1A Antibody

Mouse Monoclonal Antibody (Mab)

Catalog # AM1877b

Product Information

Application	WB, IF, E
Primary Accession	P08107
Other Accession	Q6S4N2 , Q27965 , P34930 , Q27975 , NP_005336.3
Reactivity	Human
Predicted	Bovine, Pig
Host	Mouse
Clonality	Monoclonal
Isotype	IgG1,K
Clone Names	201CT8.2.3
Antigen Region	574-600

Additional Information

Other Names	Heat shock 70 kDa protein 1A/1B, Heat shock 70 kDa protein 1/2, HSP70-1/HSP70-2, HSP701/HSP702, HSPA1A, HSPA1, HSX70
Target/Specificity	This HSPA1A antibody is generated from mice immunized with a KLH conjugated synthetic peptide between 574-600 amino acids from human HSPA1A.
Dilution	WB~~1:100~2000 IF~~1:10~50 E~~Use at an assay dependent concentration.
Format	Purified monoclonal antibody supplied in PBS with 0.09% (W/V) sodium azide. This antibody is purified through a protein G column, followed by dialysis against PBS.
Storage	Maintain refrigerated at 2-8°C for up to 2 weeks. For long term storage store at -20°C in small aliquots to prevent freeze-thaw cycles.
Precautions	HSPA1A Antibody is for research use only and not for use in diagnostic or therapeutic procedures.

Protein Information

Background

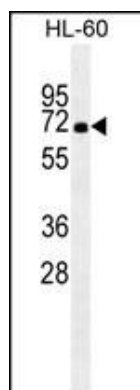
This intronless gene encodes a 70kDa heat shock protein which is a member of the heat shock protein 70 family. In conjunction with other heat shock proteins, this protein stabilizes existing proteins against aggregation and mediates the folding of newly translated proteins in the cytosol and in organelles. It is also involved in the ubiquitin-proteasome pathway through interaction with the AU-rich element RNA-binding

protein 1. The gene is located in the major histocompatibility complex class III region, in a cluster with two closely related genes which encode similar proteins.

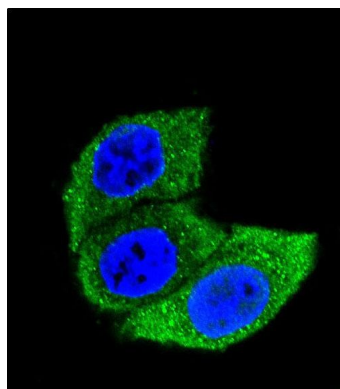
References

Wang, Y., et al. Clin. Chem. Lab. Med. 48(11):1657-1663(2010)
Eisenberg, D.P., et al. Surgery 148(2):325-334(2010)
Rusai, K., et al. Transplant. Proc. 42(6):2309-2311(2010)
Ebrahimi, M., et al. Mol. Vis. 16, 1680-1688 (2010) :
Lanneau, D., et al. ScientificWorldJournal 10, 1543-1552 (2010) :

Images



HSPA1A antibody (Cat. #AM1877b) western blot analysis in HL-60 cell line lysates (35µg/lane). This demonstrates the HSPA1A antibody detected the HSPA1A protein (arrow).



Confocal immunofluorescent analysis of HSPA1A Antibody (Cat#AM1877b) with HeLa cell followed by Alexa Fluor® 488-conjugated goat anti-mouse IgG (green). DAPI was used to stain the cell nuclear (blue).

Please note: All products are 'FOR RESEARCH USE ONLY. NOT FOR USE IN DIAGNOSTIC OR THERAPEUTIC PROCEDURES'.