

CDCA8 Antibody

Mouse Monoclonal Antibody (Mab)

Catalog # AM1868b

Product Information

Application	WB, E
Primary Accession	Q53HL2
Other Accession	NP_060571.1
Reactivity	Human
Host	Mouse
Clonality	Monoclonal
Isotype	IgG1,K
Clone Names	181CT41.2.3
Calculated MW	31323

Additional Information

Gene ID	55143
Other Names	Borealin, Cell division cycle-associated protein 8, Dasra-B, hDasra-B, Pluripotent embryonic stem cell-related gene 3 protein, CDCA8, PESCRG3
Target/Specificity	This CDCA8 monoclonal antibody is generated from mouse immunized with CDCA8 recombinant protein.
Dilution	WB~~1:500~1000 E~~Use at an assay dependent concentration.
Format	Purified monoclonal antibody supplied in PBS with 0.09% (W/V) sodium azide. This antibody is purified through a protein G column, followed by dialysis against PBS.
Storage	Maintain refrigerated at 2-8°C for up to 2 weeks. For long term storage store at -20°C in small aliquots to prevent freeze-thaw cycles.
Precautions	CDCA8 Antibody is for research use only and not for use in diagnostic or therapeutic procedures.

Protein Information

Name	CDCA8
Synonyms	PESCRG3
Function	Component of the chromosomal passenger complex (CPC), a complex that acts as a key regulator of mitosis. The CPC complex has essential functions at the centromere in ensuring correct chromosome alignment and segregation

and is required for chromatin-induced microtubule stabilization and spindle assembly. Major effector of the TTK kinase in the control of attachment-error-correction and chromosome alignment.

Cellular Location

Nucleus, nucleolus. Cytoplasm. Cytoplasm, cytoskeleton, spindle. Chromosome, centromere. Note=Localizes on chromosome arms and inner centromeres from prophase through metaphase and then transferring to the spindle midzone and midbody from anaphase through cytokinesis Colocalizes with SENP3 in the nucleolus in interphase cells

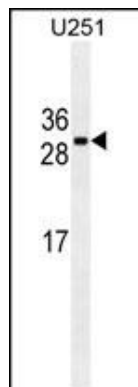
Background

CDCA8 is a component of a chromosomal passenger complex required for stability of the bipolar mitotic spindle (Gassmann et al., 2004 [PubMed 15249581]).

References

- Bourhis, E., et al. *Biochemistry* 48(29):6783-6793(2009)
Zhang, Q., et al. *Mol. Biol. Rep.* 36(3):603-609(2009)
Klein, U.R., et al. *Mol. Biol. Cell* 20(1):410-418(2009)
Xia, F., et al. *Mol. Cell. Biol.* 28(17):5299-5311(2008)
Jelluma, N., et al. *Cell* 132(2):233-246(2008)

Images



CDCA8 Antibody (Cat. #AM1868b) western blot analysis in U251 cell line lysates (35µg/lane). This demonstrates the CDCA8 antibody detected the CDCA8 protein (arrow).

Please note: All products are 'FOR RESEARCH USE ONLY. NOT FOR USE IN DIAGNOSTIC OR THERAPEUTIC PROCEDURES'.