

# GAPDH Antibody

Purified Mouse Monoclonal Antibody (Mab)  
Catalog # AM1020b

## Product Information

---

<b>Application</b>	WB, IHC-P, IF, E
<b>Primary Accession</b>	<a href="#">P04406</a>
<b>Reactivity</b>	Human, Mouse, Rat
<b>Host</b>	Mouse
<b>Clonality</b>	Monoclonal
<b>Isotype</b>	IgG1
<b>Clone Names</b>	1A10A10
<b>Calculated MW</b>	36053

## Additional Information

---

<b>Gene ID</b>	2597
<b>Other Names</b>	Glyceraldehyde-3-phosphate dehydrogenase, GAPDH, Peptidyl-cysteine S-nitrosylase GAPDH, 2699-, GAPDH, GAPD
<b>Target/Specificity</b>	GAPDH recombinant protein is used to produce this monoclonal antibody.
<b>Dilution</b>	WB~~1:8000 IHC-P~~1:100~500 IF~~1:25 E~~Use at an assay dependent concentration.
<b>Format</b>	Purified monoclonal antibody supplied in PBS with 0.09% (W/V) sodium azide. This antibody is purified through a protein G column, followed by dialysis against PBS.
<b>Storage</b>	Maintain refrigerated at 2-8°C for up to 2 weeks. For long term storage store at -20°C in small aliquots to prevent freeze-thaw cycles.
<b>Precautions</b>	GAPDH Antibody is for research use only and not for use in diagnostic or therapeutic procedures.

## Protein Information

---

<b>Name</b>	GAPDH {ECO:0000303   PubMed:2987855, ECO:0000312   HGNC:HGNC:4141}
<b>Function</b>	Catalyzes the conversion of D-glyceraldehyde 3-phosphate (G3P) into 3-phospho-D-glyceroyl phosphate in glycolysis and the reverse reaction in gluconeogenesis (PubMed: <a href="#">11724794</a> , PubMed: <a href="#">3170585</a> ). Also shows nitrosylase activity, thereby playing a role in nuclear functions (PubMed: <a href="#">11724794</a> , PubMed: <a href="#">3170585</a> ). Modulates the organization and assembly of the cytoskeleton (By similarity). Facilitates the CHP1- dependent

microtubule and membrane associations through its ability to stimulate the binding of CHP1 to microtubules (By similarity). Component of the GAIT (gamma interferon-activated inhibitor of translation) complex which mediates interferon-gamma-induced transcript-selective translation inhibition in inflammation processes (PubMed:[23071094](#)). Upon interferon-gamma treatment assembles into the GAIT complex which binds to stem loop-containing GAIT elements in the 3'-UTR of diverse inflammatory mRNAs (such as ceruplasmin) and suppresses their translation (PubMed:[23071094](#)). Also plays a role in innate immunity by promoting TNF-induced NF-kappa-B activation and type I interferon production, via interaction with TRAF2 and TRAF3, respectively (PubMed:[23332158](#), PubMed:[27387501](#)). Participates in nuclear events including transcription, RNA transport, DNA replication and apoptosis (By similarity). Nuclear functions are probably due to the nitrosylase activity that mediates cysteine S-nitrosylation of nuclear target proteins such as SIRT1, HDAC2 and PRKDC (By similarity).

### Cellular Location

Cytoplasm, cytosol. Nucleus {ECO:0000250|UniProtKB:P04797}. Cytoplasm, perinuclear region. Membrane Cytoplasm, cytoskeleton {ECO:0000250|UniProtKB:P04797} Note=Translocates to the nucleus following S-nitrosylation and interaction with SIAH1, which contains a nuclear localization signal (By similarity). Postnuclear and Perinuclear regions (PubMed:[12829261](#)) {ECO:0000250|UniProtKB:P04797, ECO:0000269|PubMed:[12829261](#)}

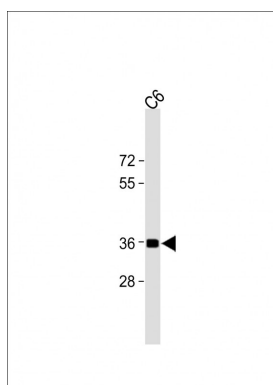
## Background

The product of this gene catalyzes an important energy-yielding step in carbohydrate metabolism, the reversible oxidative phosphorylation of glyceraldehyde-3-phosphate in the presence of inorganic phosphate and nicotinamide adenine dinucleotide (NAD). The enzyme exists as a tetramer of identical chains. Many pseudogenes similar to this locus are present in the human genome.

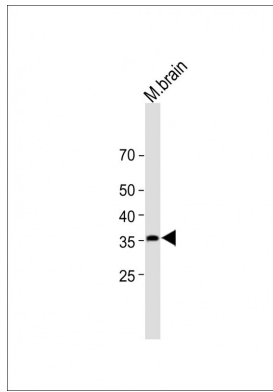
## References

Inhibition of glyceraldehyde-3-phosphate dehydrogenase activity by antibodies present in the cerebrospinal fluid of patients with multiple sclerosis. K  $\square$ ln J, et al. J Immunol, 2010 Aug 1. PMID 20610654. Proteome analysis of the thalamus and cerebrospinal fluid reveals glycolysis dysfunction and potential biomarkers candidates for schizophrenia. Martins-de-Souza D, et al. J Psychiatr Res, 2010 May 14. PMID 20471030. Sex-specific proteome differences in the anterior cingulate cortex of schizophrenia. Martins-de-Souza D, et al. J Psychiatr Res, 2010 Apr 8. PMID 20381070. Identification of melanoma antigens using a Serological Proteome Approach (SERPA). Suzuki A, et al. Cancer Genomics Proteomics, 2010 Jan-Feb. PMID 20181627. siah-1 Protein is necessary for high glucose-induced glyceraldehyde-3-phosphate dehydrogenase nuclear accumulation and cell death in Muller cells. Yego EC, et al. J Biol Chem, 2010 Jan 29. PMID 19940145.

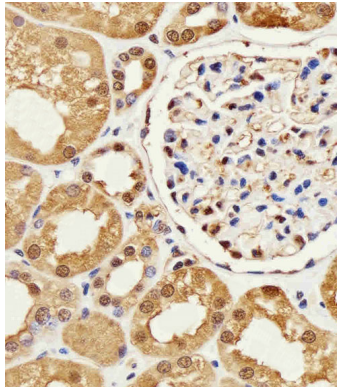
## Images



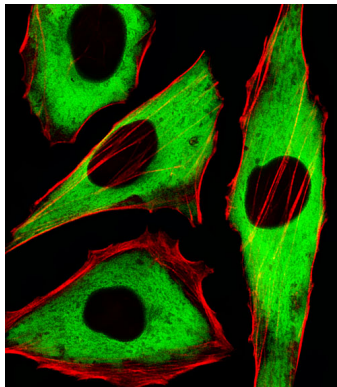
All lanes: Anti-GAPDH Antibody at 1:1000 dilution + C6 whole cell lysate Lysates/proteins at 20  $\mu$ g per lane. Secondary Goat Anti-mouse IgG, (H+L), Peroxidase conjugated (ASP1613) at 1/15000 dilution. Observed band size: 36KDa Blocking/Dilution buffer: 5% NFDN/TBST.



All lanes: Anti-GAPDH Antibody at 1:1000 dilution + mouse brain lysate Lysates/proteins at 20 µg per lane. Secondary Goat Anti-mouse IgG, (H+L), Peroxidase conjugated (ASP1613) at 1/15000 dilution. Observed band size: 36KDa Blocking/Dilution buffer: 5% NFDm/TBST.



Immunohistochemical analysis of paraffin-embedded H.kidney section using GAPDH Antibody(Cat#AM1020b). AM1020b was diluted at 1:25 dilution. A peroxidase-conjugated goat anti-mouse IgG at 1:400 dilution was used as the secondary antibody, followed by DAB staining.



Fluorescent image of HeLa cells stained with XAF1 GAPDH Antibody(Cat#AM1020b). AM1020b was diluted at 1:25 dilution. An Alexa Fluor® 488-conjugated goat anti-mouse IgG at 1:400 dilution was used as the secondary antibody (green). Cytoplasmic actin was counterstained with Alexa Fluor® 555 conjugated with Phalloidin (red).

## Citations

- [DAB2IP decreases cell growth and migration and increases sensitivity to chemotherapeutic drugs in colorectal cancer](#)
- [Glutamate receptor, ionotropic, N \[methyl D \]aspartate \[associated protein 1 promotes colorectal cancer cell proliferation and metastasis, and is negatively regulated by miR \[296 \[Bp](#)
- [CDK4/6 inhibitor palbociclib promotes SARS-CoV-2 cell entry by down-regulating SKP2 dependent ACE2 degradation](#)
- [DI-3-n-butylphthalide alleviates cognitive impairment in amyloid precursor protein/presenilin 1 transgenic mice by regulating the striatal-enriched protein tyrosine phosphatase/ERK/cAMP-response element-binding protein signaling pathway](#)
- [RanBP2/Nup358 enhances miRNA activity by sumoylating Argonautes](#)
- [Wall Teichoic Acid Glycosylation Promotes Surface Anchoring of Virulence Factors, Resistance to Antimicrobial Peptides, and Decreased Susceptibility to Antibiotics](#)
- [The E3 ubiquitin ligase UBR5 interacts with TTC7A and may be associated with very early onset inflammatory bowel disease](#)
- [miR-520h Stimulates Drug Resistance to Paclitaxel by Targeting the OTUD3-PTEN Axis in Breast Cancer](#)
- [Differential red blood cell age fractionation and Band 3 phosphorylation distinguish two different subtypes of warm autoimmune hemolytic anemia](#)
- [Long noncoding RNA atlas of the inflammation caused by asthma in mice](#)
- [Ectodermal-neural cortex 1 as a novel biomarker predicts poor prognosis and induces metastasis in breast cancer by promoting Wnt/β-catenin pathway](#)
- [Circular RNA atlas in osteoclast differentiation with and without alendronate treatment](#)
- [Iron overload contributes to general anaesthesia-induced neurotoxicity and cognitive deficits](#)

- [CircRNA\\_102179 promotes the proliferation, migration and invasion in non-small cell lung cancer cells by regulating miR-330-5p/HMGB3 axis.](#)
- [Screening and identification of epithelial-to-mesenchymal transition-related circRNA and miRNA in prostate cancer.](#)
- [Deoxycholic Acid Upregulates Serum Golgi Protein 73 through Activating NF-κB Pathway and Destroying Golgi Structure in Liver Disease.](#)
- [Isochamaejasmin induces toxic effects on Helicoverpa zea via DNA damage and mitochondria-associated apoptosis.](#)
- [A multi-kinase inhibitor APG-2449 enhances the antitumor effect of ibrutinib in esophageal squamous cell carcinoma via EGFR/FAK pathway inhibition.](#)
- [Altered decidual and placental catabolism of vitamin D may contribute to the aetiology of spontaneous miscarriage.](#)
- [Effect of Furostanol Saponins from Allium Macrostemon Bunge Bulbs on Platelet Aggregation Rate and PI3K/Akt Pathway in the Rat Model of Coronary Heart Disease.](#)
- [Induction of mTOR-dependent autophagy by WS nanosheets from both inside and outside of human cells.](#)
- [An in vitro model of foam cell formation induced by a stretchable microfluidic device.](#)
- [MicroRNA-26a inhibits multiple myeloma cell growth by suppressing cyclin-dependent kinase 6 expression.](#)
- [Exosomes increased angiogenesis in papillary thyroid cancer microenvironment.](#)
- [Inhibition of the deubiquitinase USP9x induces pre-B cell homeobox 1 \(PBX1\) degradation and thereby stimulates prostate cancer cell apoptosis.](#)
- [Downregulation of endothelial transient receptor potential vanilloid type 4 channel underlines impaired endothelial nitric oxide-mediated relaxation in the mesenteric arteries of hypertensive rats.](#)
- [Selenium-Rich Diet Induces Myocardial Structural and Functional Abnormalities by Activating Caspase-9 and Caspase-3 in Gpx-1P198L-Overexpression Transgenic Mice.](#)
- [Cyclin O regulates germinal vesicle breakdown in mouse oocytes.](#)
- [Molecular In Vivo Imaging Using a Noninvasive Cardiac-Specific MLC-2v Promoter Driven Dual-Gene Recombinant Lentivirus Monitoring System.](#)
- [SC06, a novel small molecule compound, displays preclinical activity against multiple myeloma by disrupting the mTOR signaling pathway.](#)
- [Upregulation of microRNA-96 and its oncogenic functions by targeting CDKN1A in bladder cancer.](#)
- [Hepatocellular Carcinoma Cells Induce Regulatory T Cells and Lead to Poor Prognosis via Production of Transforming Growth Factor-β1.](#)
- [Pulsatile delivery of a leucine supplement during long-term continuous enteral feeding enhances lean growth in term neonatal pigs.](#)
- [Hepatitis C Virus Entry into Macrophages/Monocytes Mainly Depends on the Phagocytosis of Macrophages.](#)
- [The natural polyphenol curcumin induces apoptosis by suppressing STAT3 signaling in esophageal squamous cell carcinoma.](#)
- [DFMG attenuates the activation of macrophages induced by co-culture with LPC-injured HUVEC12 cells via the TLR4/MyD88/NF-κB signaling pathway.](#)
- [L-Rhamnosylation of wall teichoic acids promotes efficient surface association of Listeria monocytogenes virulence factors InlB and Ami through interaction with GW domains.](#)
- [Peptide SS-31 upregulates frataxin expression and improves the quality of mitochondria: implications in the treatment of Friedreich ataxia.](#)
- [Expression and prognostic significance of MYL9 in esophageal squamous cell carcinoma.](#)
- [Silencing DNA methyltransferase 1 \(DNMT1\) inhibits proliferation, metastasis and invasion in ESCC by suppressing methylation of RASSF1A and DAPK.](#)
- [Nutrition deficiency promotes apoptosis of cartilage endplate stem cells in a caspase-independent manner partially through upregulating BNIP3.](#)
- [The Role of Annexin A4 in Triple-Negative Breast Cancer Progression and Its Clinical Application.](#)
- [Use of rhenium-188 for in vivo imaging and treatment of human cervical cancer cells transfected with lentivirus expressing sodium iodide symporter.](#)
- [Down-Regulation of CIDEA Promoted Tumor Growth and Contributed to Cisplatin Resistance by Regulating the JNK-p21/Bad Signaling Pathways in Esophageal Squamous Cell Carcinoma.](#)

Please note: All products are 'FOR RESEARCH USE ONLY. NOT FOR USE IN DIAGNOSTIC OR THERAPEUTIC PROCEDURES'.